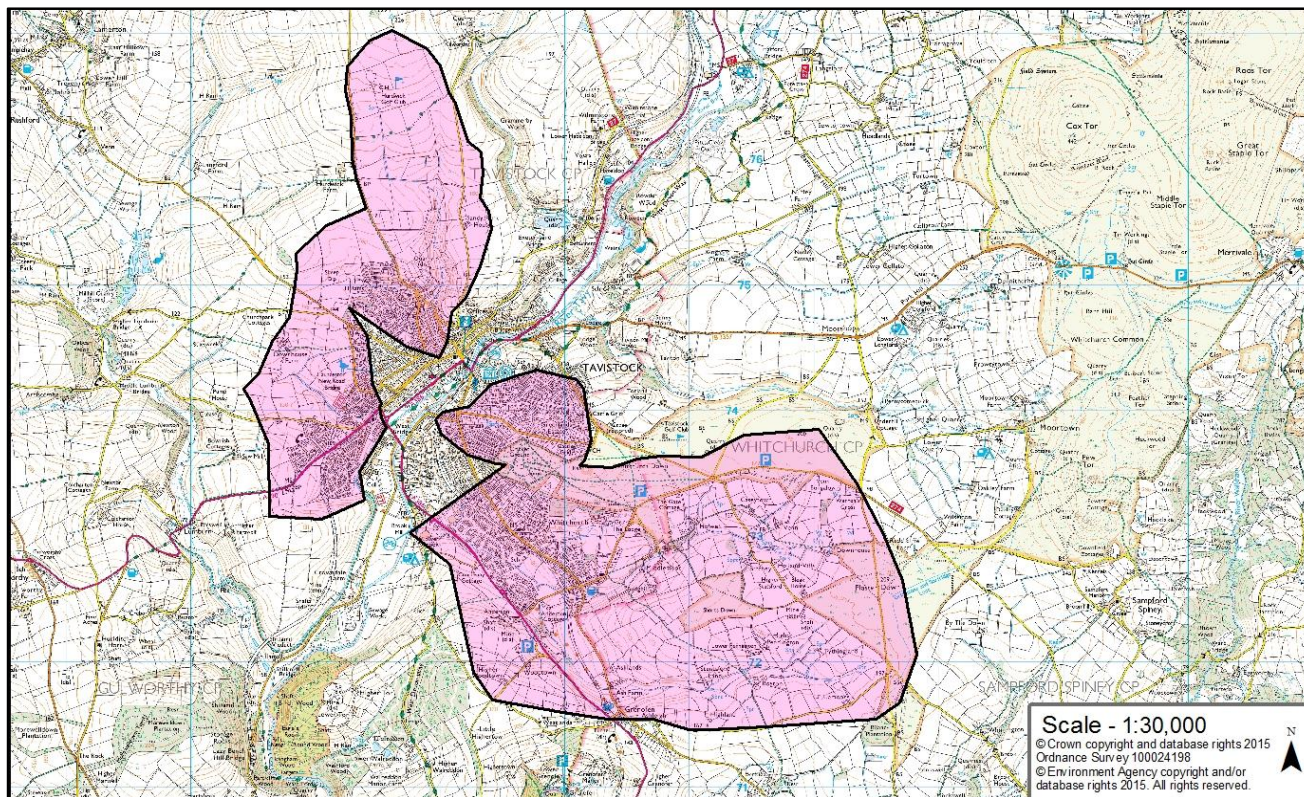


Critical Drainage Area (CDA)

DEVON – Tavistock

May 2015



Catchment Drainage / Flooding Issues

The Tiddy Brook caused major flooding on 27th December 1979 and 26th May 1981, resulting in damage to property and disruption to services in the Whitchurch area. Channel and culvert improvements on the Tiddy Brook through Bishopmead housing estate have increased the level of protection to a 1:30 year return period. Flooding is also an issue at the Anderton Road culvert.

The flooding in December 1979 also affected the Boughthayes and Bannawell Street areas. The Bannawell Street flooding was partially caused by a surface sewer blocking but flood waters also ponded upstream of the Drake Road culvert. At Boughthayes another limited capacity culvert caused flooding, while a relief pipe and new access chambers have been installed these remain constrained systems.

Minimum Drainage Standards Required

All new developments will have to play their part in reducing current rainfall runoff rates. This requirement also applies to brownfield sites that will have to match the same standards. The surface water drainage hierarchy should be followed by using infiltration as far as is practicable. Further guidance on such systems can be found in the CIRIA SuDS Manual and in Lead Local Flood Authority guidance.

All off-site surface water discharges from developments should mimic greenfield performance up to a maximum 1 in 10 year discharge rate. On site all surface water should be safely managed up to the 1 in 100 plus climate change conditions. This will require additional water storage areas to be created thereby contributing to a reduction in flooding downstream.