

Welcome to the fifth edition of the South Hams Strategic Partnership (SHSP) newsletter. It is designed to keep you informed of the progress towards delivering the South Hams Sustainable Community Strategy and its action plan. We hope you find these short updates useful.

Further information on the Partnership and the Community Strategy can be found on the SHSP webpage which is hosted at [www.southhams.gov.uk](http://www.southhams.gov.uk). Just click on the link under 'Useful websites' on the home page.

## Working Group Project Updates

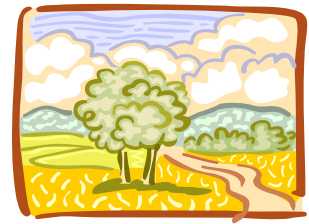


### Affordable Housing

This group has now completed the mapping of partner's assets (buildings and land) in and around Totnes to help identify sites that may be suitable for affordable housing development when they are no longer required. This has proved a useful exercise and the partners are currently exploring how these elements of ownership can be formulated into firmer redevelopment proposals to meet the objectives of the Community Strategy. The work is linked to the Totnes Development Plan Document which is scheduled for publication and consultation in the autumn. The mapping of the remainder of the South Hams is being progressed and will continue over the next few months. As a result of South Hams District Council's award from the Beacon Peer Support Fund, consultants have been appointed to undertake research into the impact of second and holiday homes on local communities and to research and support rural communities developing Community Land Trusts.

### Environment South Hams

This group has been developing its community support package and has contacted 22 parishes to date requesting progress updates on the environmental projects in their parish plans / appraisals. It is now looking at the specific advice and practical support it can offer these parishes to progress or kick-start community-led environmental projects. The group also organised a successful TLC for Trees event in celebration of World Environment Day event on 5 June. Staff volunteers from SHSP organisations spent the afternoon, maintaining the trees in the Follaton Arboretum to improve this valuable community amenity.



### Competitive Local Economy

The local economy has benefited from Devon Renaissance's investment in a number of projects in the South Hams, including £90,000 of Redundant Buildings Grants for projects worth £360,000. 12 businesses in the South Hams and 14 disabled entrepreneurs have been assisted through technology transfer and disabled business advice and support projects respectively.

## Community Vibrancy

The South Hams Volunteer Centre is progressing well and has recently placed its 100<sup>th</sup> volunteer. For Volunteers' Week (1 – 7 June) the centre had a display in the reception area of Follaton House, highlighting the benefits of volunteering.

Devon Wheels 2 Work project launched in April 2007 to provide moped loans to people between the ages of 16 and 65 living in Devon who need to access training and employment opportunities. Call 0845 0944 308 for further details.



### Active South Hams

The Leisure Youth Nights across all 4 leisure centres are continuing to be a success with young people and closer links with local clubs and coaches are being developed.

## Have your say on the development of the district

SHDC will shortly be seeking the views of local people on three new Development Plan Documents (DPDs) which will form part of the district's growing Local Development Framework:

**Rural Areas DPD** – sets out planning issues and options facing the rural areas of the South Hams, including new housing and employment sites;

**Affordable Housing DPD** – sets out the Council's approach for delivering affordable housing in relation to new development;

**Development Control Core Policies DPD** – sets out new planning policies that will be used in determining new planning applications.

Three drop-in public information events have been scheduled for July. See below for details.

Dartmoor National Park's Draft Management Plan 2007 – 2012 is also out for consultation. It can be viewed at [www.dartmoor-npa.gov.uk](http://www.dartmoor-npa.gov.uk). Responses must be received by Monday 6 August.

## Dates for your diary

What's On	Date and details
Planning Information Drop-in Events	<b>Sat 14 July, 10am-3pm, Modbury</b> The White Hart (Courtyard area), Church Street <b>Tues 17 July, 9.30am-4.30pm, Totnes</b> SHDC (Reception area), Follaton House, Plymouth Road <b>Wed 18 July, 2pm-6.30pm, Kingsbridge</b> Quayside Leisure Centre (Reception area), Ropewalk For further information please contact Forward Planning on 01803 861234.
Community Partnership Forum: 'Healthy Communities' theme	<b>Advance Notice!</b> <b>Tues 2 October, 10am-12.30pm, Flavel Centre, Dartmouth</b> The forum is open to community groups and stakeholders with an interest in the delivery of the South Hams Sustainable Community Strategy. For further information please contact Community Development on 01803 861234 or <a href="mailto:community@southhams.gov.uk">community@southhams.gov.uk</a> .

**Funding...** The Energy Saving Trust has produced a database of over 100 possible funding sources for sustainable energy projects which can be accessed at: <http://www.energysavingtrust.org.uk/housingbuildings/funding/database/fundingoutput.cfm>.

If you have any news from your community that you would like to promote in this newsletter or you no longer wish to receive this newsletter please email [community@southhams.gov.uk](mailto:community@southhams.gov.uk) or call the Community Development Team on 01803 861234