

# South Hams

The magazine from South Hams District Council

Issue 11, Spring 08

## **DIVINE CONVERSION**

*The future for St Barnabas*

## **WILDLIFE WONDERS**

*Help enhance wildlife  
in your local area*



South Hams  
District Council

# The Best Deal In Town

## Join Tone Leisure

As passionate about leisure as we are about saving you serious money, our centres are a great way of creating a healthier lifestyle.

Get the results you want at a price you can afford

### Memberships and prices to suit everyone:

#### What we offer?

- 4 "Go" fitness gyms
- Over 70 fitness classes a week
- 3 Indoor Swimming Pools
- 1 Outdoor swimming pools
- Racquet sports
- Car Parking Pass
- Excellent support, motivation & advice
- Friendly & approachable staff
- Great Value for money

#### What will you get?

- ✓ Weight Loss
- ✓ Stronger and fitter
- ✓ More Energy
- ✓ Healthier lifestyle
- ✓ Multi site & facility usage
- ✓ Fun & enjoyment
- ✓ Reduced stress levels
- ✓ New Friends
- ✓ Results you want



**We will commit to you and guarantee results on our "results" fitness programme or your money back\***

Dartmouth Leisure Centre: 01803 837010  
Quayside Leisure Centre: 01548 857100  
South Dartmoor Leisure Centre: 01752 896999

**More people, more active, more often**

Come and see for yourself. Book a free, no obligation, introductory appointment to look round any of our centres.

\*Term & conditions apply

[www.toneleisure.com](http://www.toneleisure.com)

**tone**  
leisure

...passionate about leisure 



# South Hams

Issue 11, Spring 2008



South Hams District Council

Spring is a season of renewal. All around the South Hams you can see new life in the wildlife, plants and trees that we share our beautiful environment with.

Renewal is also evident across the council. April brings a new financial year, with a new budget to deliver the services essential to local people. A new Chairman will be chosen in May, when Councillors will also elect their Leader and Executive for the year.

An old building is being given a new lease of life to help local people make a fresh start – see p10 for the inspirational story of St Barnabas Church, Dartmouth. And a new building, The Watermark, is heralding a new era for Ivybridge. See p5 to find out more about this fantastic new facility.

Two new skate parks are also now open, meaning local skaters, boarders and BMX riders have brand new equipment on which to show off their skills! See p19 for details.

There's also all the usual event and activity listings on p21 and 22 to ensure that the next few months really do have a spring in their step!

Jenny Bishop  
Editor

## News

05 Stories making the headlines across the district

## House, home and garden

06 Triple savings for the future

08 Housing benefit changes

## Feature

10 Divine conversion

## Your council

12 Name that tag!

14 Domestic violence - don't suffer in silence

15 Plans for new homes

## Business

16 Wildlife on your doorstep

17 Slapton line - looking to the future

## Leisure

18 Open spaces for all

19 Devon Youth Games

21 Events and activities listings

Cover Photo: Nick Shepard, Bayards Cove

This publication is available in alternative formats, such as large print or a language other than English. Please contact us on 01803 861234 or e-mail [customer.services@southhams.gov.uk](mailto:customer.services@southhams.gov.uk)

## Council Priorities



### Affordable housing

Securing a supply of housing for local people at affordable levels



### Good jobs

Creating the conditions for the growth and maintenance of quality economic activity



### Retain the district's character

Maintaining the district's distinctive environment whilst enabling access and sensitive development



### A clean district

Maintaining a clean environment



### An accessible council

Work with others to improve access to key services



### Value for Money

Improve service performance in a cost-effective way



### Climate change



### Needs of young people



### A Healthier community

## How to contact us:

South Hams District Council, Follaton House, Plymouth Road, Totnes, TQ9 5NE

Office open: 08.30 – 17.00 Monday to Friday

01803 861234

01803 866151

[customer.services@southhams.gov.uk](mailto:customer.services@southhams.gov.uk)

[www.southhams.gov.uk](http://www.southhams.gov.uk)

Out of hours emergency number:

01803 867034

Editor in chief: Jenny Bishop

For advertising sales contact Marie at Manning Publishing Ltd Tel: 01954 212906

e. [marie@manpublishing.co.uk](mailto:marie@manpublishing.co.uk)

Publishing Services:

Manning Publishing Ltd, The Irwin Centre, Scotland Rd, Dry Drayton, Cambridge CB23 8AR

Tel 01954 212906 Fax: 01954 212105

e. [info@manpublishing.co.uk](mailto:info@manpublishing.co.uk)

[www.manpublishing.co.uk](http://www.manpublishing.co.uk)



This magazine is printed on paper which is:



Wood fibre from sustainable forests



Fully recyclable and biodegradable



Elemental Chlorine Free

All data contained in advertisements being subject to the Advertising Standards Authority guidelines, are accepted by us in good faith at the time of going to press. The opinions and views expressed in South Hams magazine are not necessarily those of South Hams District Council or Manning Publishing Ltd.

ISSN 1749-5172

Reproduction of editorial is strictly prohibited without prior permission from the publisher. All rights reserved copyright © 2007.



*"I couldn't, now I can!"*



When my friends and I went to theme parks I used to pretend I was scared of heights. Since losing weight with LighterLife, I'm first in the queue for every ride.

- Lose weight fast and keep it off
- No weighing or calorie counting
- Friendly, encouraging Counsellors who are qualified to help you
- Small supportive groups with people just like you

*I've kept the weight off for 21 months!*

3 stone or more overweight?  
Lose weight fast with LighterLife!

Sally Kirk, Totnes  
**01803 840966**  
[www.lighterlife.com/sallykirk](http://www.lighterlife.com/sallykirk)




**Devon HearingCare**  
Open up your world

**It's good to hear!**

Don't let hearing loss get in the way of your ability to enjoy life.

Call Devon Hearingcare for a FREE hearing evaluation and expert advice on the latest hearing systems.

**Freephone 0800 0121 509**

Home visits by arrangement  
4 Victoria Place, Kingsbridge, Devon TQ7 1JG  
[www.devonhearingcare.co.uk](http://www.devonhearingcare.co.uk)  
Kingsbridge • Totnes • Ivybridge • Dartmouth and South Hams



Lynn Falciano  
Hearing Aid Specialist

**BISHOP'S BLATCHPACK**

- Local and National Removals
- European Removals
- International Shipping
- Secure Storage
- Packing Service
- Commercial Relocations
- Est. 1854

tel: 01392 202040  
[www.bishopsmove.co.uk](http://www.bishopsmove.co.uk)



**"We ship the West to the World"**

**HOOPER & WOLLEN**  
**Solicitors**

*"For all your legal requirements"*

Conveyancing . Litigation . Personal Injury  
Employment . Insolvency . Marine & Shipping  
Family and Child Care . Mediation . Licensing  
Tax Investment . Landlord Tenant  
Probate . Legal Aid

**10 The Quay**  
**Dartmouth**  
**Tel: 01803 832191**  
**[www.hooperwollen.co.uk](http://www.hooperwollen.co.uk)**  
also offices in Paignton and Torquay




**Reba Hangers** 

Recycling Bag Hangers

Quick, easy, clean and removable wall-mounted recycling bag hangers.

Now available on-line for only £9.99 plus p&p or from Harris and Son, 92 High St, Totnes.




Patent Pending

Mail-order on: 01803 865577  
**[www.rebahangers.co.uk](http://www.rebahangers.co.uk)**



## What could you do with 11p per week?

Eleven pence per week won't go far these days, but that is all South Hams District Council has increased its share of council tax by for 2008/09\*.

South Hams District Council works hard to deliver excellent value for money for your council tax. Just 11p per week more will help ensure we continue to deliver good quality services, whilst still keeping your council tax substantially lower than the national average for district council areas and the third lowest in Devon and Cornwall!

Don't forget, the district council only receives 9% of your council tax. The rest of the total bill goes to:  
Devon County Council 73%  
Devon & Cornwall Police Authority 10%  
Devon & Somerset Fire and Rescue Authority 5%  
Town and Parish Councils 3%  
\* For an average Band D property



## Centre of attraction

The Watermark, a sparkling new development in the centre of Ivybridge, is home to a state of the art library, cinema and theatre space, IT suite, community information resources and coffee shop. Also on site are conference and banqueting facilities, business units for rent and a business support service.

The centre officially opens on 14th April and is already showing its green credentials. Sixty solar panels on the roof will produce enough electricity to power three domestic homes.

The Watermark has been built on Ivybridge Town Council owned land with funding from Devon County Council (£1.9m), South Hams District Council (£470,000), Ivybridge Town Council (£460,000), Devon Renaissance (£400,000), European funding (£200,000) and £260,000 from other sources.

## Our little magazine goes international

A recent visitor to the district was so impressed with our South Hams Magazine that she requested a few copies to take back home to San Diego, USA to show the city council there how it's done!



## Review of Devon councils underway

In December 2007, the Secretary of State commissioned the Boundary Committee to carry out a review of local government in Devon, following Exeter City Council's failed bid for unitary status. A unitary council is a single tier authority delivering services currently provided by both district and county councils.

The Boundary Committee will advise the Secretary of State of alternative ways to deliver council services across Devon. This could involve changes to current local authority boundaries.

The review started in March with councils being asked to provide information and come up with 'concepts' for the Committee to consider.

The Committee's draft proposals are expected to be published for public consultation in July. After all comments have been considered, the Committee has until the end of the year to submit its

recommendations to the Secretary of State, who will then decide whether or not to implement the proposals.

Any new unitary council created as a result of this review must enjoy a broad cross-section of support, provide strategic leadership, achieve neighbourhood empowerment, deliver value for money and meet an affordability test.

South Hams Council is working with the Boundary Committee to find the best possible solution for the people and communities of the South Hams. The council believes that the South Hams is a special and distinct place and will fight to retain democratic representation for our market and coastal towns and large rural area. Most importantly, the council believes that any new structure for Devon must have a rural heart which will not allow local people's needs to be overlooked in favour of urban priorities.

Visit [www.boundarycommittee.org.uk](http://www.boundarycommittee.org.uk) for more information on the current review of councils in Devon.



Specialist in Timber Decking

Balustrading in Stainless Steel, Aluminium and Glass

FREE SURVEY AND ESTIMATES



Tel: 01803 712737

[www.mccombedecking.co.uk](http://www.mccombedecking.co.uk)



Run out of recycling sacks? No problem. Just follow the guide below and we will ensure you have a new supply as soon as possible. Or if there is a delay, let you know when more recycling sacks will be delivered to you.

The council provides blue and clear sacks for householders to gather their recycling and leave it ready for collection. Each household receives an annual delivery of 52 blue and 26 clear sacks. This is usually enough to last a family for a year.

Invariably some households will need more sacks before the next annual delivery is due. The council has introduced a new system for re-ordering sacks. This will enable a supply of new recycling sacks to be delivered at the same time as your recycling is collected.

In the future all rolls of sacks will come with an A5 size fluorescent sticker. When more sacks are needed just attach the sticker to the recycling sacks when you put them out for collection. Make sure it is in a place where the refuse collection crew can see it. This will alert the collection crew to the fact you need more sacks and they will deliver a new supply from the stock held on the collection vehicle.

People living in blocks of flats or who share a recycling collection point should write the number of their property on the sticker. It is also possible to ring the recycling helpline to request further supplies of recycling sacks.

Additional fluorescent stickers are available from the reception at Follaton House, local town council offices, by phoning the Recycling Helpline on 01803 861199 or by emailing [customer.services@southhams.gov.uk](mailto:customer.services@southhams.gov.uk)



## Triple savings – money, fuel and the planet!

With the cost of fuel bills steadily rising, any idea which will reduce our energy usage has got to be worth considering.

Simple things which can result in long term savings without spending any money should be at the top of everyone's list.

Always turn off lights and electrical appliances when they aren't being used. Don't leave TVs, videos, stereos and telephone chargers on 'standby' when they are not in use. These appliances still use over 60% of the energy on standby as they would if left switched on.

Up to 10% of your fuel use could be saved by turning down the heating thermostat by just 1°C – but try to keep your room temperature between 18 °C and 21 °C.

If you are considering buying a new fridge, washing machine or other appliance, try to get the best energy rating you can afford. It will save you both energy and money in the future. Look for the 'Energy Saving Recommended' logo.

If you are planning to change your boiler the new boiler must be 'A' rated. Just making the change from an old 'G' rated boiler to an 'A' rated one could save over £250 a year on your fuel bill.

Replacing old light bulbs with energy efficient ones could save £60 over each bulb's lifetime. The energy efficient bulbs can last up to ten times longer than an ordinary bulb and are now available in many shapes and sizes, with screw and bayonet fittings.

By insulating your loft and installing cavity wall insulation you could save £200 every year. There are many money saving offers available and, if you are over 70 or in receipt of benefit, you may be able to get FREE loft and cavity wall insulation.

**For further details and advice phone the Devon Energy Efficiency Advice Centre (free) on 0800 512012.**

**Recycling and Refuse Bank Holiday Collection**

All collections will run **one day late** on the weeks beginning **Monday 5th and 26th May 2008**.

Please ensure all refuse and recycling is out by 7am.

**Recycling Helpline 01803 861199**



**Can't get on the housing ladder?  
Have you thought about shared  
ownership?**



**Want to find out more?  
Please call our Shared Ownership  
Co-ordinator, Deborah Wilson  
on 01803 869626**



Working in  
partnership with



Tor Homes is a member of the Devon & Cornwall Housing Group



## Are you a Holiday Home or Second Home Owner?

HHM provide a full range of property services:

- Key-Holding (365 Day)
- Holiday Changeovers
- Linen Service
- 5 Star Cleaning
- Property Maintenance

Relax, you're in Safe hands!

To request a brochure call:

**01803 520040**

Or visit:

[www.holidayhomemanagement.com](http://www.holidayhomemanagement.com)

**“I wonder  
how mum is?”**



**Whatever we're doing; working sleeping or surfing the waves, the reassurance that our loved ones are safe and secure is important.**

Responding to calls for help  
**24 hours a day  
7 days a week**

Call24Hour can offer peace of mind to you.

**For more information, a free, no  
obligation, home demonstration:  
Freephone 0800 085 0407  
or visit: [www.call24hour.com](http://www.call24hour.com)**





## Recycling - a big thank you to all South Hams residents



South Hams residents are amongst the most enthusiastic in the country when it comes to recycling – and that's official!

South Hams District Council took ninth place in a recent league table of 393 English local authorities, with a magnificent 48.75% of waste being recycled away from landfill sites during 2006/7.

Every household in the South Hams is able to use the blue and clear sacks to recycle plastic bottles, cans, paper and cardboard. The recycling scheme combined with the introduction of the wheeled bin system for compostible materials and landfill waste to most of the district has helped achieve this success.

So far 2007/8 looks like being an even better year because more than 55%

of waste produced in the district is being recycled. But why stop there?

There is no reason why South Hams Council can't take the top spot in the league table; especially with the help of so many people committed to making a difference for the future.

There is much to gain from recycling. Not only are landfill sites rapidly filling up but they can create environmental problems as well. Many types of waste material either do not break down in the ground or produce potentially harmful greenhouse gasses or leachates.

We are all responsible for the waste our households produce. By recycling we can save precious resources and energy but we can still do more by reducing and preventing waste and

finding ways to reuse it in the future.

Look out for tips on ways of reducing the amount of waste going to landfill in future issues of South Hams Magazine.

### FACTBOX

- Every year, each dustbin contains enough unrealized energy for 500 baths or 3,500 showers, or 5,000 hours of television.
- Annually, each household generates over 1 tonne of rubbish – that's a total of 31 million tonnes of household waste.
- We throw away the equivalent of our own body weight in rubbish every seven weeks.

## Local Housing Allowance coming soon!

Local Housing Allowance (LHA) is the new version of housing benefit that could affect you if you claim housing benefit after 7th April 2008.

### Key features:

- LHA will use 'standard' rent levels across the South Hams - based on the number of bedrooms you need.
- These rent levels will be set by the Rent Officer Service and published by the council so you can work out in advance how much help you could get.
- If the actual rent you pay your landlord is more than the LHA you receive, you will have to find the difference from your own resources. If it's less, you can keep up to £15 per week of the difference.
- LHA will normally be paid to the tenant and not the landlord, although there are some exceptions to this.

### You will not be affected if:

- Your landlord is the council or a housing association (for example Tor Homes).

- You are already claiming housing benefit and don't move or have a break in your claim.
- Your tenancy started before 1989.
- Your rent has been registered as a fair rent.
- You rent a caravan, mobile home or houseboat.
- Your rent includes care, support, supervision or a significant amount for board.

### Council tax bills will be arriving soon!

Are you paying more than you should be? Have you got a friend or relative who should get some help because they have a limited income? Ring us now on 01803 861234 for a leaflet or go to our website [www.southhams.gov.uk](http://www.southhams.gov.uk) and follow the links through council tax.

### If your circumstances change

If you receive help with your rent or council tax you must tell us straight away if your personal or financial circumstances change. It's the law! Ring us on 01803 861234.

LOVES the MOVES you HATE

**PEDRICK'S**

- House Removals
- Office Removals
- Local and National
- Containerised Storage



Telephone: 01803 864180

Mobile: 07926 933617

[www.pedricksremovals.co.uk](http://www.pedricksremovals.co.uk)

Unit 1, 2 & 3 Dart Mills, Wills Road Industrial Estate, Totnes, TQ9 5XN



We Guarantee to beat  
ANY competitive quote

*Toad Hall Cottages*

- The local agency with a national reputation.
- Quality cottages with a service to match.
- Cheerful & extremely proficient Toad Hall team.
- Extensive marketing and PR campaigns.
- State of the art, user friendly website.
- Highly acclaimed, eye catching brochure.
- Numerous repeat guests and satisfied owners.



Brochure and/or owner information pack available

01548 853089

[www.toadhallcottages.co.uk](http://www.toadhallcottages.co.uk)



*L H Rendle*

Flooring • Carpets • Tiles for walls and floors  
• Lamps • Light fittings • Ceiling fans

We are a local business that provide the South Hams with a professional and expert service.

Visit our spacious showroom at the Old Station Yard, Kingsbridge. With plenty of parking, come and browse at your leisure.



Old Station Yard, Kingsbridge, Devon  
TQ7 1ES Tel: 01548 852406 or  
Email: [enquiries@lhrendle.co.uk](mailto:enquiries@lhrendle.co.uk)

**A new kitchen  
at a fraction of the price!**

Stylish & Functional

We supply a huge range of replacement doors, drawer fronts, handle, carousels, pull-outs, fittings and accessories to transform your kitchen.



**DYNASTY DOORS**

Trust our experience -  
Established over 25 years

For expert advice visit  
our Showrooms.  
See our new website...  
or ask for our Free  
brochure.

Covering your area...



Phone for  
**FREE Home Survey**

(no obligation)

OPEN: Mon - Fri: 9am - 5pm Sat: 9am - 1pm

Showrooms at:-

Unit 6 · Filham Moor Ind Estate · Blair Rd · Ivybridge

**Tel: 01752 895444**

[www.dynastydoors.co.uk](http://www.dynastydoors.co.uk)



# Divine Conversion



A Dartmouth Church was once described as being 'ornamental to the town, a convenience to the inhabitants and a blessing to the poor'. But although this was written in 1830 when St Barnabas had just been built, these words are proving just as relevant to its role in the community in the 21st century as they were nearly two hundred years ago.

St Barnabas, located on the banks of the Dart in this beautiful estuary town, is a classic example of how the public and private sectors can work together to restore a derelict building to its former glory - creating something that is beneficial to the entire community now and for generations to come.

A former Chapel of Ease, St Barnabas was built in 1830. Made of local stone, the church occupies a prominent location in the conservation area close to the riverbank, overlooking the town.

After serving the local community for generations it was declared redundant in 1975. Mr Bob Trevatt, who now lives in Dartmouth, fell in love with the building and purchased it in 1979.

Under Mr Trevatt's careful stewardship, St Barnabas was put to a number of uses over the years ranging from craft workshops to an informal drop-in centre for the local community, to a rather ramshackle book emporium. Throughout this time, Mr Trevatt's ultimate vision for

the church was that it should provide safe sanctuary for those less fortunate in the community. Unfortunately a lack of resources meant that the building deteriorated at an alarming rate until it was placed on the council's buildings at risk register in the 1980s.

Although much needed remedial work was done to the building throughout the 1980s and 1990s, it wasn't until the turn of the century that Mr Trevatt's original vision of supported housing and a community facility would be realised.

The securing of some much needed funding by South Hams District Council and the creation of a partnership with Signpost Care Trust began a new phase in the life of St Barnabas.

After much negotiation between agents, architects and the council, a scheme to convert the by now dilapidated chapel into community facilities and supported accommodation was approved and work began in earnest in 2003 to bring the building back to life

The original vision for the front section of the church was for a bookshop, cafe and training facility to help people back into employment. This initial idea took a stronger foothold in 2006 when Training for Life came onboard. Training for Life is a social enterprise organisation, which helps local people who have faced difficulties in the past make positive changes to their



“ The challenge is to secure good quality, sensitive design which preserves both the character and the integrity of an historical building while meeting the needs of those who will use it. ”

lives so they can find employment and thrive in the local community. Having had similar success in London they saw the St Barnabas project as somewhere ideally suited to their aims. Training for Life set up a self financing company to help train people in the hospitality business who have been unemployed for at least six months. Dartmouth is renowned for the quality of its restaurants serving food from local produce. What better place to train people in the restaurant trade.

Not only would Signpost Housing be offering safe, supported accommodation but local people would now have the chance to start over and learn new skills. Mr Trevatt's dream was becoming a reality. Richard Gage, a conservation officer for the council, worked in close consultation with housing and planning officers. He had the unenviable task of balancing the moral obligation of providing this new start to local individuals with his love of preserving and restoring buildings of historic architectural importance.

“The challenge is to secure good quality, sensitive design which preserves both the character and the integrity of an important historical building while meeting the needs of those who will use it.”

The proposals for St Barnabas were further complicated by the nature of the building itself. The problem with many old buildings is that they don't lend themselves

easily to alternative uses – a church is after all a church. So the challenge facing the architects, planners and conservation officers was to come up with a design that allowed for a new use whilst respecting the original ecclesiastical practice. It's thanks to some enterprising design by talented architects that common ground was found where the needs of the development were balanced with the historic merits of the building.

The South Hams has a proud and diverse architectural heritage, which is held in high regard across the world. The need to protect and upkeep the vast range of historic buildings means a conservation officer has a much higher profile. Mr Gage commented: “The 21st century conservation officer is not simply concerned with the sympathetic upkeep and maintenance of historic buildings. We have a duty to bring disused and dilapidated buildings back to life to serve businesses and the community at large.

“St Barnabas has almost been a labour of love for all of those who have been involved in the project over the years. It's something that I inherited from a predecessor and for my other colleagues it feels like a family heirloom that has been handed down through generations of officers and architects.”

Debbie Holloway, South Hams District Council's affordable housing officer, has



been involved with the project from the start. She agrees that negotiations over the scheme were at times quite complicated because of the complex nature of finding funding for the project: “It's been a long hard struggle to finally get this scheme off the ground and I am immensely proud of what we have achieved and of the commitment of everybody who has invested so much time into the project. It has brought together a large number of organisations who otherwise would not have had the chance to work together.” With the building scheduled for opening in summer 2008, Dartmouth will have a new jewel in its crown - and proof that by working together one man's dream can come true.





## Have your say in the community

Residents in Totnes and Dartmouth had the chance to air their views at special Community Action Days held in February.

The events, organised by Devon and Cornwall Police, Devon and Somerset Fire Service, The Guinness Trust, Tor Homes and South Hams District Council, were a pilot for what is hoped to be a much larger project.

Representatives from all the organisations involved visited residents in Bridgetown, Totnes and Townstal, Dartmouth to offer advice and take action on issues such as safety in the home, fire prevention, anti-social behaviour, dog fouling or illegal waste dumping. Residents welcomed the chance to talk about community issues they felt were important and to find out what more can be done to make their community a safer and happier place.

Community Action Days are planned for other towns in the South Hams throughout 2008 to ensure that residents feel safe and happy in their communities and homes. By working together like this we can make the South Hams a cleaner, safer and healthier place to live - for everybody.



# Name that **tag!**

The Totnes Crime Prevention Team and the Council Street Scene officers have recently joined forces to combat the problem of graffiti within the district. Graffiti is an ongoing problem within the towns, causing damage to property and making areas look uncared for. A new partnership between Devon and Cornwall Police and South Hams District Council now aims to tackle the graffiti problem with the support of the community making the district a cleaner place to live.

The street scene officers have been photographing graffiti tags in the towns, these will be pictured on the 'Name That Tag' posters to be displayed throughout the South Hams. Members of the public who can identify any culprits for these tags are being asked to call Crimestoppers in confidence with information, which will allow the police to act and deal with the offenders.

Most culprits seem unaware that graffiti and tagging is a criminal offence for which they can be issued with a penalty notice of £80 or dealt with through the courts which may result in a criminal record.

Members of the public can call Crimestoppers with information about any crime, not just for serious crimes. All calls are completely anonymous and the caller may receive a cash reward.

Crime Prevention Officer PC Flatman said; "Crimestoppers is an excellent way for the public to provide information anonymously to the police. A survey conducted recently in



Totnes highlighted the fact that many people have only a very limited understanding of what Crimestoppers is for. Hopefully this initiative will go some way to rectifying this lack of understanding.

"I believe that many people have information on crimes in their area and Crimestoppers provides a means of giving information to the police. We need the support of the public to tackle crime and improve the local communities."

**Crimestoppers 0800 55511**

**All calls are anonymous and you may receive a cash reward**



# Customer First

South Hams District Council is continuing to put the customer at the forefront of its day-to-day life by launching a new Customer First scheme designed to make dealing with the council even easier than before.

Customer First is a charter which publicly outlines the standards and levels of service to the public the council aims to provide. We believe the initiative will not only make the authority more open and accessible, but will also lead to better customer service, faster resolution of customer enquiries and will ultimately lead to improved satisfaction with the council.

South Hams District Council already strives to provide a good level of service to the general public. Today's busy lifestyle means there is pressure on people's time. We hope to make contacting the council as hassle-free as possible.

The Customer First initiative will deliver real benefits to the public and will build on the success of how the council has altered the way it delivers front line services over the previous two years. The customer service unit based at Follaton House currently aims to resolve over 80% of customer enquiries during the first phone call. It is hoped that the Customer First initiative will build on that success by putting customers' needs firmly at the heart of everything we do.



# On the buses

# Planning for the future

South Hams residents who applied for a new National Bus Pass but have not yet received it are being asked to be patient. The new National Bus Pass will allow people who are eligible, free off-peak travel on all local bus services throughout England. Holders of existing Devonwide passes were encouraged to send in their applications for the new national passes as early as last November. Government rules about the production and distribution of the passes has meant that they are not being sent out until late March. People who have not received their pass by the end of March are advised to contact one of the numbers below for further information and advice.

Once the new National scheme is up and running, travellers with a valid pass will be able to enjoy a new freedom to explore using all of England's local bus services entirely free of charge.

From April 2008 free bus travel will be available on all registered local bus services within England for eligible residents aged 60 years and over or those with disabilities. The new scheme will provide free off-peak travel on all local bus services throughout England between 9.30 a.m. and 23.00 p.m. on weekdays and anytime on Saturdays, Sundays and public bank holidays.

If you are eligible and would like to apply for one of the new bus passes but do not currently have a Devonwide pass you can either telephone one of the numbers below or collect an application form from the council's offices at Follaton House. If calling in person, please bring with you proof of identity and proof of residence, e.g. a passport and utility bill, and two passport style photographs.

For further information contact Devonwide on 01392 383688 or Customer Services on 01803 861234 or visit [www.devon.gov.uk/nationalbuspass](http://www.devon.gov.uk/nationalbuspass)



The council has streamlined its planning services, making them simpler, faster and easier for people to use. It is now possible for businesses and local residents to access planning information and guidance 24 hours a day online.

People can view current planning applications and appeals, submit comments about a current planning application or monitor their own planning application using the planning and development pages of our website at [www.southhams.gov.uk](http://www.southhams.gov.uk)

To give local people greater access and encourage involvement in the planning process, you can also view online the proposed development plans for the area (Local Development Framework) and find out details about the Development Control Committee.

We are also working with the Government's online service, the Planning Portal, [www.planningportal.gov.uk](http://www.planningportal.gov.uk), to allow people to submit planning applications electronically. Using online submissions would help to further speed

up and simplify the planning application process and encourage cost savings for both the applicant and the council.

South Hams Council now uses the National Standard Planning Application Form (1APP), which from 6th April 2008 will be the only legal way to apply for planning permission. Paper versions of the new planning application forms are available from the council. However, the 'intelligent' nature of the Planning Portal forms - asking only questions relevant to the applicant - will make them quicker and easier to complete.

By encouraging the use of electronic services the council's planning team is moving closer to delivering the ideal - an efficient and cost effective paperless planning system. Our investment in e-planning has definitely paid off and we can now deliver a service to people 24 hours a day, 365 days a year. It is helping us to provide effective and well targeted services and enhance the quality and efficiency of planning services in the South Hams.



## Heighway Field Associates Chartered Architects



We design all types of buildings and restore and care for a large number of historic houses and churches. We create furniture and fine joinery in collaboration with local craftsman.

The Practice is in partnership with many Housing Associations and Contractors in the provision of affordable housing in the South Hams and elsewhere in Devon.

**Bradninch Court, Castle Street, Exeter**  
Tel: 01392 490800  
Email: [architects@heighwayfield.co.uk](mailto:architects@heighwayfield.co.uk)

**Middle Meadow, Dittisham, Dartmouth**  
Tel: 01803 722287  
Email: [heighway@middlemeadow.eclipse.co.uk](mailto:heighway@middlemeadow.eclipse.co.uk)



## Lost Dogs

From April South Hams District Council took over responsibility for dealing with stray dogs. Previously the task was shared with the police.

Every year about 50 stray dogs are taken to local kennels either by dog wardens, the police or the public. Owners will have to pay a fee to reclaim their dog from kennels.

A further 150 stray dogs are reclaimed by their owners before reaching kennels while around 10% are not reclaimed by their owners. Sadly some dogs are destroyed because their owners cannot be traced or the dog is unable to be re-homed.

Owners can help prevent their dogs from straying by keeping them on a lead when out walking near livestock. Also if your dog has 'Houdini' ambitions make sure garden fencing is secure and in good condition.

From April 2008 anyone finding a stray dog or wanting to report a lost dog should call the council on 01803 861234 and follow the advice given.

### Dangerous dogs

Any incidents involving dangerous dogs or dogs found worrying livestock should continue to be reported to the police, who will then investigate as criminal offences. The council does not deal with these types of incidents. Devon and Cornwall Police can be contacted on 08452 777444.

### Dog fouling

It is an offence to not clear up after your dog if it has fouled in a public place and a fixed penalty fine can be issued for this offence. Double-bagged dog waste can be put into ordinary waste bins if a special dog waste bin is unavailable.

### Chips with everything

All dogs must have an identity tag on their collar showing the owner's name and current address. Ideally they should also be micro-chipped. This makes it much easier to identify lost dogs and saves dog owners a lot of anguish. Micro chipping costs from £15 and can be carried out at local veterinary surgeries and animal welfare centres. Owners are identified using the unique number on each microchip. It is important that owners ensure their contact details are kept up-to-date on the national database. Collar tags can often come loose or are unreadable. The council uses microchip readers to scan stray dogs making it easier to re-unite lost dogs with their owners.



## Hair Salons helping to save lives

The campaign to raise awareness of domestic violence and abuse in Totnes is growing in support as more local businesses sign up to the J9 campaign.

Gill Goddard Hair Salon on The Plains, Totnes, is the latest business to sign up to the campaign which is being run by South Devon and Dartmoor Crime Reduction Partnership, of which South Hams Council is a partner.

The J9 project originated in Cornwall after Janine (J9) Mundy was murdered by her husband in 2003. Janine's family supports this programme to raise awareness of domestic abuse and to help victims escape their abusers before it's too late.

The J9 scheme was launched in Totnes in November 2007 when local businesses were invited to attend special information and awareness evenings held at Follaton House.

Specifically, businesses in Totnes are being asked to:

- Make information on domestic abuse available to their customers
- Train one or more of their staff in awareness of domestic violence
- Display the J9 logo (when trained) so victims know where they can obtain the relevant information to access the support they need.

Gill Goddard who owns a hair salon on The Plains in Totnes attended a J9 presentation, she said: "This event really brought the issue of domestic violence and abuse home to me. I am only too happy to display the J9 brochure in the salon. I am not expected to give counselling in any shape or form, just to make the brochures available so that people have contact details of agencies who can help. This information may save a life."

Even more businesses in Totnes are being approached by Women's Aid and the local police who are offering half-hour presentations to local companies at their premises at a time to suit them. Hairdressers, chemists, dentists and nurseries in particular are being asked to participate in this campaign, as these businesses may have clients who are



Gill Goddard



experiencing domestic violence and abuse themselves, or know someone who is. Domestic abuse is more common than many people think with 8,600 incidents reported in 2006 to the police in Devon alone. Domestic violence accounts for a quarter of violent crime recorded by the police, yet a great deal goes unreported. This awareness raising campaign is designed to encourage those suffering this crime to seek help from the police and support agencies.

**Anyone suffering domestic violence or abuse is urged to contact South Devon Womens Aid on 01364 644088 for support.**

**For more information and to sign up for the J9 campaign please contact Peter Dale, Community Safety Officer, South Hams District Council on 01803 861278.**

### FACTBOX

- A woman calls the police every 60 seconds in the UK regarding domestic violence
- Two women a week and 30 men a year lose their lives as a result of domestic violence
- Domestic violence and abuse affects at least one in four women and one in six men at some point in their lives



## New homes



The artists impression, The Lamb, Totnes

The first homes being built at The Lamb, as part of the Totnes Southern Area development could be ready for the new owners to move into in June.

Construction work on the 51 homes began in early 2007 and is making good progress. Developer Midas Homes has estimated the final properties at

Heath Way will be completed ready for the first occupants to move in during early 2009.

Nine properties have been released in the first phase with five already reserved. The second phase of 12 homes - two at The Lamb and ten at Heath Way - has just been released. It is possible to get a sneak 'builders' preview inside some of the properties at The Lamb South. Further details are available by visiting Midas Homes' sales office in Leechwell Street. Midas Homes also hopes to open a show home in April. The properties are being marketed under the name 'Southgate' but it is likely the name Heath Way will be continued until the road meets the junction with The Lamb.

South Hams District Council has remained closely involved in the development of the Totnes Southern Area. The result is a quality housing scheme which will help provide much needed affordable housing for Totnes.

As part of the development, Sovereign Housing Association is providing ten shared ownership units. Anybody interested in purchasing one of the shared ownership homes should register their interest with Sovereign Housing by contacting the company's Marketing Manager Anna Snow on 01393 888015.

## Plans for affordable homes

Two important elements of the South Hams Local Development Framework (LDF) have been the subject of much debate during the last six months.

Last October the council published a new planning document for Totnes and Dartington looking ahead to 2016. This was required to provide 400 new homes and five hectares of new employment land. Later, in January, the council published its policies on affordable housing, including planning guidance showing how every future housing development will help tackle the district's critical need for affordable housing.

The public were consulted on both documents. The Totnes and Dartington plan generated more than 600 representations and most of the issues raised related to the council's top two priorities of providing for affordable housing and quality employment. Other concerns included using green field sites for development, traffic congestion, car parking and the risk of flooding. There are complex issues to consider and difficult decisions to take. The council with key stakeholders is considering the views expressed and establishing the best way forward for the local community.

A key priority is the need for affordable housing and the council is determined to look for ways to increase the supply of affordable homes for local people. The council's proposed policies on affordable housing set out how future housing developments could help provide more affordable housing.

The aim is that all housing sites should play their part, starting with a small financial contribution from developments of just one house and then stepping up a ladder to the point where, for sites of 15 houses or more, half of every scheme will have to be for affordable homes.

There are also targets set for larger sites, which will be specifically proposed in LDF documents, including the Totnes and Dartington plan. These targets range from 50% for sites on the edge of Plymouth, through 55% for sites in South Hams towns, to 60% for village sites.

A revised Totnes and Dartington plan will be submitted to the Secretary of State later in the year, followed by a public consultation. A government inspector is due to examine the council's affordable housing policies in June. It is then hoped the policies can be adopted by the council before the end of the year.

## New year resolution

Yes, it's that time of year folks, when the gentle thud of a brown envelope falling through the letter box heralds the arrival of the annual council tax bill. South Hams District Council collects council tax on behalf of Devon County Council, Devon and Cornwall Police, Devon and Somerset Fire and Rescue, town and parish councils and ourselves. It is a good time to explain how we go about collecting the tax, and how we deal with accounts that aren't paid on time.

The tax is actually due and payable on the 1st April each year. Not many people realise that. To soften the blow, South Hams District Council as the billing authority, is able to allow people pay in instalments.

The due dates of each instalment are printed on the bill showing when each amount is due. There is no extra charge for paying by instalments. It's a bit like taking out a 0% APR loan on a sofa, except of course you don't get to sit on it. And no, we don't do 'buy now pay next year' agreements either!

If anyone takes out a loan, the repayments would be due on the same day each month or they would receive a stern letter from the finance company. It's basically the same for council tax. If we don't receive the payment on time we have to send a reminder. If it's a case where people persistently don't pay on time, they could end up losing the right to pay by instalments - at which point the whole balance of tax for the year becomes due.

If it remains unpaid, we issue a summons to secure the debt which will add £55 in costs to the amount already due. The case is then passed to an enforcement agent who acts on the council's behalf to collect the debt. It is vital that people don't ignore any contact from them as they have the right to use bailiffs and this can end up costing the debtor a lot more than an extra £55.

Is it really worth anyone taking the risk and ending up paying more than they absolutely have to? The answer has to be 'no'. If anyone is experiencing difficulties making payments, we really are here to help - please contact us immediately on 01803 861234. We can discuss individual circumstances and give advice on what to do for the best.



Tourism businesses in the South Hams are being encouraged to take part in a new project to raise awareness of the diversity of wildlife in the district.

Wildlife Wonders is part of the South Hams Sustainable Tourism Initiative. The aim is to promote and raise awareness of the wildlife and heritage of the South Hams for the enjoyment of visitors and to promote its protection by local communities.

Clare Collier, an independent wildlife expert, visited businesses to carry out a wildlife survey of the local surroundings. Each business then received a personalised pack containing a wildlife report, a map and wildlife trail, a species guide and suggestions on improvements to enhance visitors' enjoyment and knowledge of the local area.

Several new leaflets packed with visitor information on when and how to spot different species of wildlife and a range giving details of local heritage and town information have also been produced.

A new South Devon Wildlife website is being set up which will allow visitors to search for unique holidays specifically to enjoy the diversity of wildlife we have in the South Hams. The website is linked to the new South Devon visitor site [www.visitsouthdevon.co.uk](http://www.visitsouthdevon.co.uk)

Wildlife Wonders receives funding from South Hams District Council, the European Union, South West Tourism, Devon County Council and the South Devon Area of Outstanding Natural Beauty.

For more information or to get involved contact Sarah Streeeter, Sustainable Tourism Officer 01803 861234 or email [sarah.streeeter@southhams.gov.uk](mailto:sarah.streeeter@southhams.gov.uk)

Clare Collier can be contacted on 01803 834379 or email [ecc2@uk2.net](mailto:ecc2@uk2.net)



## Bid for new funds

Local Action is the community led element of the Rural Development Programme for England (RDPE), a funding programme from 2007 - 2013 designed to support the development of English rural areas.

It aims to improve the quality of life for people living in rural areas by helping to strengthen and diversify the local economy. Local Action Groups will be set up to tap into people's wealth of local knowledge about their communities. These groups will develop Local Development Strategies to look at issues and take advantage of opportunities as they happen.

Local Action intends to look at four key areas:

- finding ways of helping businesses to grow and increasing involvement in local communities including developing local supply chains and products
- making it easier to access services and increasing the availability of those services
- achieving more economic benefit from using sustainable materials and methods
- encouraging local people to take more responsibility

Two Local Action funding bids are being developed by representatives from the public, business, voluntary and community sectors. The South Devon Coastal bid covers the southern half of the district including Kingsbridge, Salcombe, Modbury and Dartmouth. The Greater Dartmoor bid covers the northern part of the South Hams including Ivybridge, South Brent, Dartington and Totnes, as well as West Devon, the whole of the Dartmoor National Park, parts of Teignbridge, a parish in Mid Devon and some parishes in the Tamar Valley.

The South West Regional Development Agency will be selecting Local Action Groups to run programmes in the South West. Applications close on 23 May 2008. Thirty-five community partnerships have so far expressed an interest in bidding for more than £86 million in funding. Currently only £28 million of funding is available therefore competition for these funds will be intense. However if the two local bids are successful, the Local Action Groups could be operating from October 2008. See the autumn edition of the South Hams Magazine for an update.

For further information please contact: South Devon Coastal LAG – Alan Stapleton at [alanstapleton@btinternet.com](mailto:alanstapleton@btinternet.com); Greater Dartmoor LAG - Gaynor Hughes, SHDC at [Gaynor.hughes@southhams.gov.uk](mailto:Gaynor.hughes@southhams.gov.uk)

## Help and advice for migrant workers



South Hams District Council has published a 'Migrant Workers Handbook' to help overseas workers access the services they need while they are living or working in the district.

Researched and written by the South Hams Council for Voluntary Service (CVS), the handbook covers employment and finance, emergency services, housing and accommodation, health and wellbeing and education and training. It also gives information on how to access a range of other local services, including libraries and volunteering opportunities.

The booklet has been funded by Centrica, the company developing the Langage Energy Centre in the far west of the South Hams, which currently employs around 150 overseas workers. In addition to the handbook, the money from Centrica has also enabled South Hams Citizens Advice Bureau (CAB) to provide confidential advice to workers

on issues such as discrimination, employment law and their migrant worker status.

The handbook is available in English, French, Spanish, Portuguese, Flemish, Polish, Hungarian, Slovakian and Albanian. It is also available to download at [www.southhams.gov.uk](http://www.southhams.gov.uk) and hard copies can be obtained from Follaton House and various community facilities including libraries, health centres and police stations, in the western area of the South Hams and the eastern area of Plymouth.



## Showing the way



Torcross

People whose lives would be affected by a temporary closure of the Slapton coast road have helped decide the routes any diversions should take. Two routes - north and south - have been agreed for the next time storm damage temporarily forces the closure of the road between Strete and Torcross. Permanent road signs now mark these routes with circular symbols for the diversion north and diamonds showing the way south.

Local residents, in particular the parish councils coming together as the Coleridge Association, worked with the Slapton Line Partnership (SLP) to decide the most appropriate and practical alternative road routes. Now that the decision has been made, local residents and businesses have the chance to become familiar with both routes, helping to avoid many of the difficulties experienced in the past.

A study by an independent engineer predicted that as a result of natural coastal erosion the road would suffer increasing damage with the likelihood of it being closed altogether within the next 30-50 years.

The Slapton Line Partnership comprises the county, district and parish councils, English Nature and other interested parties including local businesses and landowners. For more information visit [www.slaptonline.org](http://www.slaptonline.org) email [enquiries@slaptonline.org](mailto:enquiries@slaptonline.org) or call 01803 861246.

## Last Delivery

In 2007 the government carried out a public consultation regarding the Post Office network. As a result it was announced that, nationally, 2,500 Post Offices would close and up to 500 'outreach' offices would be created. At the same time the government established a set of national access criteria for the provision of Post Office services.

The country has been split into 50 areas, of which Devon, including Exeter, Plymouth and Torbay, is one. Each Post Office will be measured against a list of criteria, laid down by Post Office Limited, which will determine those to be earmarked for closure.

Postwatch, the consumer watchdog for postal services, will have the opportunity to examine and comment on the closure proposals. If Postwatch puts forward a strong argument for keeping a particular Post Office open, and Post Office Limited agree, then it might be possible for that Post Office to be taken off the proposal and be substituted by the next one on the list.

To ensure that closures are spread fairly around the country, around 18% of post offices in each of the 50 areas will close. So if one Post Office in Devon is saved, another in the county will be closed. To try to reduce the effect on the public, 'outreach' services will be introduced in several areas across Devon as a replacement for some of the closed Post Offices.

Public consultation on the Post Office closures in Devon will begin on 20th May 2008. It is at this stage that South Hams residents will learn how they will be affected, and will have an opportunity to express their views to both the Post Office Ltd and Postwatch.

### Moving House? Need a fast response?



#### What searches are in your Home Information Pack?

There are different types of searches available when you move home. If you ask your conveyancer to ensure that an official Local Authority search is included in the Home Information Pack (HIP) for your prospective new home, you can rest assured that any restrictions or plans held by the council, that could affect the value or desirability of the property, will be revealed. A council search is fully certified and is accepted by all mortgage lenders.

You have a choice about what search you receive when you move home.

South Hams District Council take **4** working days to complete a search

For more information please contact your local Land Charges team

01803 861127

[landcharges@southhams.gov.uk](mailto:landcharges@southhams.gov.uk)

[www.southhams.gov.uk](http://www.southhams.gov.uk)



South Hams  
District Council



## Outreach playtime

Last year South Hams District Council was awarded £200,000 from the BIG lottery fund to support a variety of play projects, including the refurbishment of Dartmouth and Totnes skateparks and the provision of a new play bus to deliver play opportunities and equipment to rural communities in the South Hams. Two other local groups are also providing and supporting play schemes. SPARC will be running two-day Playschemes during the Easter and summer holidays in a variety of locations. While Play Rangers will be appearing at three parks later this year.

## Good news for visiting vessels

Salcombe's visitor charges have been frozen and facilities improved for 2008! This is the second year running that charges have been frozen and facilities improved for yachts visiting the council run harbour.

### New for 2008:

- Visitors will receive two shower tokens for use at Salcombe Yacht Club
- Stays of three nights will receive a fourth night free (to be taken out of season if earned on visit during July or August)
- Reduced visitor prices between September 08 and May 09.

Visiting yachts help boost the local economy, so the Harbour is taking action to keep charges down whilst improving facilities.

Ian Gibson, Harbour Master for Salcombe said: "I look forward to welcoming visitors – old and new alike – to Salcombe this season so they can see how the jewel in Devon's crown is also great value for vessels."

## Open spaces for all

We are lucky in the South Hams to have such a diverse range of green spaces, including parks, gardens, beaches, outdoor sports facilities, play areas, allotments and nature reserves – to name but a few!

Our landscape and recreation team has produced a five-year plan showing how the council hopes to work with the community to enable as many people as possible to enjoy the green spaces on their doorsteps.



The aims are to:

- increase access and use
- improve quality and public benefit
- work with communities
- create places for activity and exercise
- improve space for children and young people
- manage green spaces to take into account the needs of wildlife and the local environment

The plan is already being put into action. An independent audit of more than 100 children's play areas is underway, along with a wider assessment of green spaces across the district and the council's tennis courts and sports pitches.

Copies of the Public Space Strategy and Action Plan are available from early May. Visit [www.southhams.gov.uk](http://www.southhams.gov.uk) or ring 01803 861234 for details.

## Stepping out...



Getting out in the fresh air and walking for health is a good way of getting fit and healthy. The Walk and Talk healthy walking scheme is growing in popularity with four groups up and running in the South Hams and a fifth one – Totnes – hopefully being set up during the summer.

Relaunched last winter Dartmouth Walk and Talk has walks to suit all abilities with easy walks on Tuesday and more challenging walks on Thursdays.

Ivybridge Walk and Talk group meets on Tuesdays (easy walks) and Thursdays (moderate walks) at 10am at South Dartmoor Leisure Centre.

Kingsbridge Walk and Talk group meet on Wednesdays at the Rest Centre and at Quayside Leisure Centre. Gentle walks at 9.45am, more challenging walks at 11am and 2pm.

South Brent Walk and Talk group meets on Fridays at 2.30pm, in the London Inn car park, Exeter Road for easy/moderate walks around the area.

Visit [www.whi.org.uk/walkfinder](http://www.whi.org.uk/walkfinder) for details of walks near you or contact Keith Rennells on 01803 861234.



## Devon Youth Games

South Hams youngsters are being sought to represent the district in this year's Devon Youth Games, taking place on Saturday 28th June in Plymouth at the College of St Mark and St Johns, Brickfields Recreation Ground, and the Devonshire Health and Racquet Club.

Youngsters from each of Devon's district council areas will compete in a variety of sports. With an emphasis on inclusion and participation, the Devon Youth Games is aimed at young people between the ages of eight and 16 years, who do not already compete at a county or regional standard. In previous years more than 2,000 competitors have taken part.

Competitions will be held in the following sports - aquathlon, athletics, badminton, cricket, gymnastics, hockey, netball, tag rugby, tennis, and volleyball. This year it's hoped to add squash, mini soccer, futsal (an indoor version of football) and table tennis.

At last year's the games held in Okehampton the South Hams team had its most successful performance coming second in the overall team event and also winning the fair play trophy.

The Community Sports Department based at Ivybridge Community College is working in partnership with South Hams Council to put a team forward for the Devon Youth Games. Team selection and training sessions will be organised in April/May.

**For more information contact Chris or Chloe at Community Sport on 01752 698315 or email [comsport@ivybridge.devon.sch.uk](mailto:comsport@ivybridge.devon.sch.uk) or visit [www.activedevon.org](http://www.activedevon.org)**



## Ramps wheeled in

Skaters, Skateboarders and BMX bikers in Totnes and Dartmouth will be riding high this year on newly installed skate parks. The new, state of the art apparatus, supplied by an innovative South West company HAGS Play, is now in place in Borough Park, Totnes and next door to the leisure centre in Dartmouth.

This has been made possible with an award from the Big Lottery Childrens Play Grant and funding from South Hams District Council who together came up with £75,000 to pay for the new equipment.

The young skateboarders themselves had a big hand in deciding the design of the parks and the type of equipment which would best meet their needs. Their research even included a trip to Sidmouth to try out a similar skate park designed by the same manufacturers.

The equipment was manufactured in Germany and delivered on low loader lorries ready to be assembled on site. The high performance concrete provides maximum resistance to vandalism, outdoor durability and noise prevention. Developed jointly with skaters this equipment gives an excellent skating experience.

Devon Youth Service together with the young people, plan to hold several events and activities during the spring and summer. The youngsters and their youth workers are also looking at ways to provide additional new equipment. The skate parks have proved to be very popular and are already in constant use.



## Be fire aware

When the sun is shining there are few better places to be than in the South Hams enjoying the summer weather.

Everyone loves to relax and enjoy the great outdoors particularly at this time of year, but just because you're taking a well-earned break, don't forget fire safety precautions particularly if you are camping or caravanning.

This is just to highlight a few essential safety points.

- Ensure that tents and caravans are kept at least six metres apart and keep parked cars well clear
- Keep matches and lighters out of the reach of children
- Flammable liquids and gas cylinders should be kept outside the tent and away from children
- Never use candles or naked flames in tents and do not smoke inside
- Keep all cooking appliances away from the walls and roof of the tent and do not cook near flammable materials or long grass

Have an escape plan and if necessary be prepared to cut your way out of the tent if there is a fire and make sure everyone knows how to put out a clothing fire – stop, drop and roll.

### Remember - prevention is the key

- A fire can destroy a tent in less than 60 seconds
- If a fire should break out call the fire service by dialing 999 and give the exact location giving the map reference and local landmarks if possible
- Get everybody away from the fire into open air
- Use a fire extinguisher if safe to do so
- If fire threatens the gas cylinder, turn off the valve, disconnect the cylinder and move it to a safe place, but only if you are not putting yourself in danger

For a free Home Safety Visit call freephone 080073 11 822 or visit the D.S.F.R.S. website on [www.dsfire.gov.uk](http://www.dsfire.gov.uk)





maximise your holiday letting potential




the west country's holiday specialists  
 extensive media & online marketing campaigns  
 efficient administration • free owners information pack  
 contact a property manager on 01237 459914  
[holidaycottages.co.uk](http://holidaycottages.co.uk)




**ARE YOU IN PAIN?**

- Do the muscles in your back, neck and shoulders ache?
- Have you had a sprain or strain?
- Would you benefit from increased relaxation, improved circulation and decreased stress and tension throughout your body?

**THEN MASSAGE CAN HELP!**

**DONNA LINCOLN BSC. R.S.A.** specialises in deep muscle treatments to ease chronic back and soft tissue problems

Discover the benefits of massage  
 Home visits or at my therapy rooms in Totnes  
 For further information or to make an appointment ring  
**01803 849190 or 07719 456791**



Love the Flavour  
 food & gardening festival  
 26th-27th April 2008

local's best FERMoy'S Food & Drink Association Love the Flavour

entrance via Fermoys Garden Centre & Farm Shop

**AN EXCITING NEW FESTIVAL  
 CELEBRATING ALL THAT'S GOOD  
 IN FOOD AND GARDENING**

Fermoys Garden Centre & Farm Shop has joined forces with one of the region's top Food and Drink producers; South Hams Food and Drink Association to create a new and innovate Festival combining two of the nation's favourite past-times - eating and gardening! Meet local plant growers and food producers. Enjoy demonstrations, workshops and Q&A sessions; and there's plenty to buy too!

**Adults £2.50 children under 16 FREE**  
 on the A381 Newton Abbot  
 Totnes Road phone for details  
 01803 813504



**CAFE ASIA**  
 Chinese & South East Asian Cuisine  
 Restaurant & Takeaway

Thai | Malaysian | Japanese | Cantonese



We use only the freshest ingredients sourced locally where possible and imported if needed e.g. Thai herbs. Come and relax in our friendly family run restaurant and let your taste buds get transported half way around the globe.

Restaurant Reservation 01548 853 818

Takeaway & Delivery Service Available 01548 857 888

**Opening Hours**  
 Open Every Day (including Bank Holidays)  
 Sunday to Thursday 5.30pm - 11.00pm  
 Friday & Saturday  
 5.30pm - 11.30pm




[www.thecafeasia.co.uk](http://www.thecafeasia.co.uk) Also at: 45 High St Totnes, Devon  
 30 Mill Street, Kingsbridge, Devon Tel: 01803 868866

South Hams ONLY  
 Kitesurf and Buggy School

**Seabreezesports.com**

Equipment provided. Insured and qualified instructors. Whether water or land we will provide a fun day kite flying.

Lessons 6 hours £99 each maximum group 4

Contact Richard  
 on 07778 395368



The South Hams really is somewhere special to live, work and play. So why not make some time to enjoy one of the many interesting and exciting events taking place around the district during the next few months ...

## APRIL

- **15 Easter eggstravaganza.** Sharpham Estate, Ashsprington, 10am - 1pm. Bring a packed lunch. Adults £6, children £3. Sorry no dogs 01803 847869.
- **17 Afternoon walk Coleton Fishacre,** Kingswear. 2.15pm, entrance fee plus £2.50 adult, £1.50 child, 01803 752466.
- **17 Tribal survival,** Sharpham Estate, Ashsprington. 10am - 2pm. Bring lunch. Adults £6, children £3. 01803 732799.
- **18 Voyager canoe riverside picnic,** Tuckenhay. Hot drinks included. 3.30pm - 8pm, £17 per person 01803 865301.
- **19 Action and adventure** Courtlands Centre, Kingsbridge. Walk high wire, try an assault course, abseil, or ride the zip wire? 9.30am - 12.30pm £10 per person limited places, 01803 861384.
- **20 Ewes, lambs and lunch,** Collaton Down Farm. Gentle walk from 11am - 1pm. Adults £3, children £1.50, £3 lunch. Not suitable for pregnant women. 01803 712636
- **23 Apple trees and wild food,** Sharpham Estate, Ashsprington. 10.30am - 3.30pm. Call 01803 867018.
- **25 When the boats come in.** Guided tour of Brixham fish market, auction and cooked breakfast. Adults £6.50/£6 children £4.50/£4, 01803 861384
- **25 April - 5 May Ivybridge Walking & Outdoor Festival 2008** Something for everyone to enjoy, 01752 897035.

- **26 Dry stone walling,** Middle Soar, Marlborough, Kingsbridge. (Devon Rural Skills Trust) David Carlisle 01803 615634.
- **26 Dawn chorus** at Slapton Ley Meet 6am at Reserve Office for bird spotting walk followed by cooked breakfast. Adults £10, children £3 01548 580685.
- **27 Spring wild food,** Sharpham Estate, Ashsprington. 11am - 4pm. 01803 867018 for further details.

## MAY

- **1 Woodlands Leisure Park.** Emazdad the Magician, Spangles the Clown, Ben the Juggler
- **2-11 Modbury fair week** 01548 830159 [www.modburytic.org.uk](http://www.modburytic.org.uk)
- **3 Birds and breakfast,** Sharpham Estate, Ashsprington. Meet 6.30am, return 9.30am. Adults £6, children £3. To book 01803 732799.
- **3 Cows, calves, yoghurt & bluebells Challonscombe Farm,** Bigbury. Tour a beautiful organic dairy and learn how the milk is made into yoghurt. 2pm - 4pm. 1-2 miles, some steep hills. Adults £3, children £1, plus some money for refreshments. 01548 550044
- **4 Blackawton village day Stalls,** activities and celebrations. Visit [www.discoverdartmouth.com](http://www.discoverdartmouth.com)
- **4 Seabird mayhem** See guillemot colony 10am - 1pm Berry Head Visitor Centre, Brixham. Adults £3.50, children £2.
- **4 Blackawton worm charming** Watch the teams charming worms from ground! From 12 noon, outside the Normandy Arms. Further details 01803 833986.

- **5 Surf's up!** Bigbury-on-sea. Beginners' 2 hour surf lesson. Limited places restricted to local residents. 01803 861384.
- **5 Woodlands Leisure Park Street performer** Richie, Nutty Noah, Father Mike's Jazz Band.
- **5 Rockpool ramble,** Salcombe Meet North Sands car park, 11pm. Wear appropriate clothing and wellies. Adults £3, children £1.
- **7 Walk & Talk,** Overbecks and Salcombe. Meet Quayside Leisure Centre, Kingsbridge. 01803 861456
- **10 Go coasteering,** Start Point An exciting adventure sport. Meet at Start Point car park 10am, return 12.30pm. Limited places for local residents. 01803 861384.
- **10 Dawn chorus walk,** Greenway, Galampton. Hear the fabulous dawn chorus and enjoy a breakfast. Meet at 5.30am car park. Adults £8, children £4, To book call 01803 842382.
- **10 Stone face** a Devon earth bank, Higher Basdworthy, South Brent. Learn a traditional skill and help to restore South Devon's distinctive landscape features. (Devon Rural Skills Trust) Jennie Godwin 01364 642480
- **11 Drive like the wind!** Two hour sessions starting at 9am; 11am and 1.30pm - 3.30pm. £15 adults only. Bantham or Beesands. Limited places for local residents only. To book 01803 872191.
- **16 River Yealm by Voyager canoe.** Noss Mayo. 1.45pm - 6.45pm. £22 per person. To book 01803 865301.

**100,000 SQ. FT. OF INDOOR FUN!**

**Woodlands**  
DARTMOUTH

Discover our Caravan Parks

**NEW SWINGSHIP**

White Kennell Industry Ltd

Woodlands Leisure Park Blackawton, Totnes, South Devon TQ9 7DQ  
Tel: 01803 712598 + [www.woodlandspark.com](http://www.woodlandspark.com)

**new era OF FUN!**

Woodlands Leisure reserves the right to close the park or any attractions with out prior notice.

## 16-18 Dartmouth Music Festival

[www.dartmouth-music-festival.org.uk](http://www.dartmouth-music-festival.org.uk) or call Dartmouth Tourist Information Centre 01803 834224.

## 24 The Stanborough Chorus,

Malborough. A summer supper concert at 7.30pm, Malborough Village Hall.

## 24 Pole lathes and green

**woodworking** Rudolf Steiner School, Dartington. For details, prices and to book, see the DRST event on 22nd March (Devon Rural Skills Trust) Jennie Godwin 01364 642480.

## 24 Seaweed, Surfers and a Saxon saint 4 mile Green Lanes walk.

Wembury Marine Centre 11am. Bring a picnic. 4 miles. Adults £3, children £1.

## 25 Sail away, Salcombe. Sailing catamarans around the estuary and coast. Two-hour taster. Limited places for local residents only. To book 01548 843451.

## 26 Grow a sunflower

Coleton Fishacre, Kingswear, 12 noon. Normal NT charges plus £1.50 per child, 01803 752466.

## 28 Family bushcraft day

Sharpham Estate, Ashsprington. Bring a packed lunch. Adults £9, children £5. 11am until 3.30pm. To book 01803 732799.

## 29 Wildflower evening walk

Berry Head, Brixham. Meet at Visitor Centre, 6.30pm. Adults £3.50, children £2 01803 606035.

## 31 Beach clean at Churston Cove.

10am-12 noon, FREE, 01803 606035.

## 31 Dart Voyager canoe races

Bow Creek, Tuckenhay. Crews up to 10. Registration 12.15pm, first race 1.30pm. Call 01803 865301.

## JUNE

### 1 Summer elderflowers at

**Sharpham** 11am - 2pm. Adults £6, children £2, booking essential. 01803 867018. Weather and elder dependant!

### 3 Coastal farm experience.

See how farm is managed with environment in mind. Meet 6pm at Scobbiscombe Farm, Kingston 01752 346585.

### 4 -29 The Great Create

Festival of arts set in the National Trust's Greenway Gardens, near Galmpton. 10.30am - 5pm each day. Normal garden admission prices apply. [www.thegreatcreate.uk](http://www.thegreatcreate.uk) for details.

### 6 Bat walk at Berry Head

Watch the rare greater horseshoe bats emerge from their roost. Meet at Berry Head Visitor Centre, Brixham at 8pm. Adults £3.50, children £2. Booking essential, call 01803 606035.

### 7 Orchard Moth Watch

Come and see how many we can spot. Meet 8pm, Holbeton orchard (park at village hall). Hot chocolate and cakes! Adults £3, children £1.50 plus money for refreshments.

### 8 Surf's up!

For details see the event on 5th May at Bigbury-on-Sea. Meet at 12.45pm. £15 per person. Places limited, restricted to South Devon residents, booking essential. Email [enquiries@southdevonaonb.org.uk](mailto:enquiries@southdevonaonb.org.uk) or call 01803 861384.

### 12 Paddle the Dart

by moonlight Stop on the riverbank for a campfire and hot chocolate. Meet at 5.15pm at Tuckenhay. £19 per person. Booking essential, 01803 865301.

### 13 - 15 Salcombe Music Festival

Enjoy three days of live music - indoors and out with something for all tastes, around Salcombe. [www.salcombeinformation.co.uk](http://www.salcombeinformation.co.uk) or call 01548 843927.

### 14 Midsummer Mask Making

Guidance from the Sharpham rangers, create summer masks and crowns. Bring a packed lunch. Adults £9, children £5. 11am until 3.30pm, booking essential. Call 01803 732799.

### 21 - 22 Dartmouth Art Weekend

See a wide range of artists at work and buy local works of art. There will be canvas gazebos all over Dartmouth over the weekend.

### 22 Farming for the birds

Enjoy a guided walk around this 446 acre National Trust farm. Meet at 2pm at Southdown Farm (signed from Malborough - map ref: SX 700 385) return at 4.30pm. Some steep hills. Adults £3, children £1. Bird seed will be on sale after the walk

*Disclaimer: South Hams District Council cannot be held responsible for the events listed above. We recommend you call ahead to check times and details wherever possible.*

*This is a free listing service - events will be included strictly subject to space.*

If you have an event taking place in the South Hams during June to September which you would like to see listed in the Summer 2008 edition of South Hams Magazine then please email details to [public.relations@southhams.gov.uk](mailto:public.relations@southhams.gov.uk) or write to the address on page 3 by no later than 30 April 2008.



## Out and about

The 2008 Spring/Summer issue of the Coast and Countryside Events programme is now available. Published by the South Devon Area of Outstanding Natural Beauty unit, it covers various activities taking place in South Devon from April through to the middle of September including archaeological and wildlife walks, sports, festivals, crafts sessions and garden tours.

A number of events have been organised to celebrate the 'Year of Food and Farming'. These include farm walks, tours and food tastings, all helping to show children in particular where their food comes from and how it's produced.

Dates for the 2008 South Devon Walking Festival have been announced. It will take place between 26th September and 5th October and will feature over 30 walks catering for all levels of participants. What better way to enjoy the beautiful South Hams countryside.

The free leaflet is available from information centre, leisure centres, libraries, shops and post offices and also online at [www.southdevonaonb.org.uk](http://www.southdevonaonb.org.uk).

# What does the Council do for you and how?

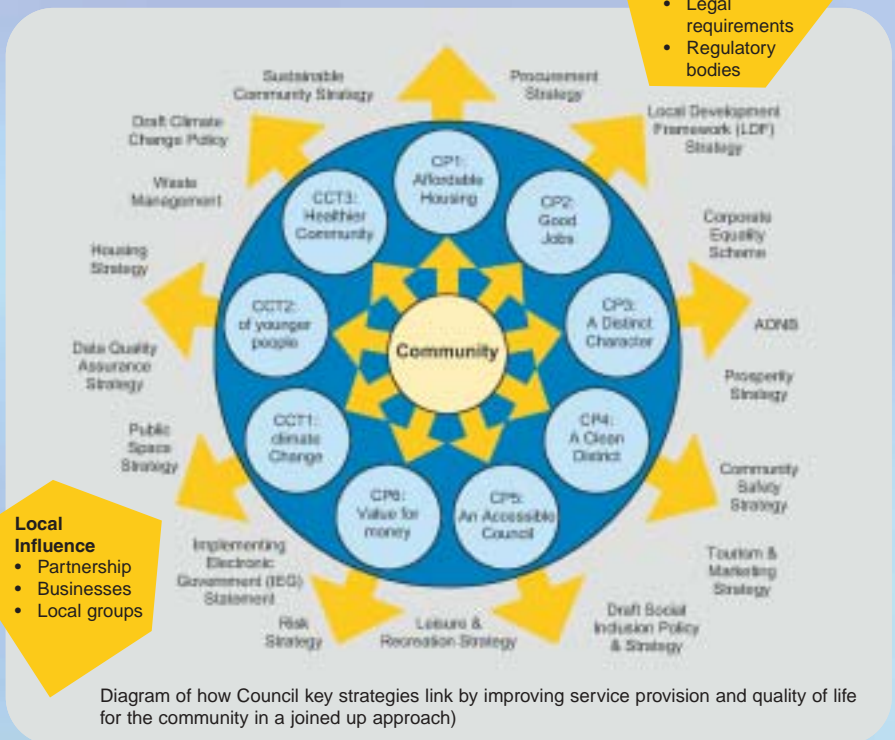
The Council works hard to provide services that are right for all who live work and visit the area. The council has consulted with local residents on what is considered to be important for the South Hams, 6 priorities and 3 cross cutting themes were introduced but are soon to be reviewed to make sure we are still working towards what is considered to be important by residents.

Under each of the Council priorities you will be able to see which service functions contribute to the Council priorities. In addition a diagram shown on this page displays a selection of the council's key strategies and policies, that are required by Government or are considered to be important as they may have an impact on the South Hams resident, worker or visitor to the area. The diagram shows how key policies and strategies link in working towards improving service provision and quality of life for the community in a joined up approach.

**Key:**  
 CP- Council Priority  
 CCT- Cross Cutting Theme

**National Influence**

- Government
- Legal requirements
- Regulatory bodies



The Council's key activities and functions which link to the priority:

## Affordable housing:

- Provision of housing advice and homelessness prevention service
- Provision of temporary accommodation
- Securing standards in rented accommodation and helping vulnerable people maintain their homes
- Administration of Housing and Council Tax benefits
- Meeting local housing needs, particularly affordable housing and reviewing the Housing Strategy for future delivery

## Good jobs:

- Making sure the places of work and leisure are safe and without risk to health
- Licensing and registration
- Supporting economic development and regeneration
- Managing Pannier markets on Council land in such a way that they support the local economy and also provide an income for the Council
- Provision of engineering and construction projects and advice
- Increasing prosperity through tourism promotion and supporting tourism business growth and development

- Planning and implementation of repairs and maintenance and capital works, including work for other public organisations

## Retain the districts distinctive character:

- Ensure the Council maintains a clean, green and safe environment and has in place a resource that will monitor and regulate activities to make sure anti-social behaviour is managed in an effective manner.
- Conserves landscape and supports cultural activity
- Manages and maintains quality parks and open spaces
- Makes sure that new development is in line with planning bodies
- Provides design and conservation advice
- Maritime coast protection and land drainage
- Facilitates the delivery of major developments in the district, including the sustainable new community at Sherford

## A Clean district

- Environmental Protection including Pest Control
- Collecting refuse and recycling waste from properties within the South Hams
- Beaches are cleaned throughout the year
- Investigate and clear up fly tips, litter and trade waste within the South Hams

- Remind people of the obligations in the first instance but, take necessary enforcement action where appropriate
- Respond to reports of dangerous and stray dogs and dog fouling (in liaison with the Police)
- Removal of abandoned vehicles

## An accessible council:

- Provide an efficient customer contact centre which provides easy access to all front line services either via telephone, email, web or by visiting the Council. Ensuring that there is a customer first positive attitude.
- Run a safe, efficient and welcoming harbour that caters for the needs of the local communities, visitors and the environment
- Provide electoral registration and elections service
- Facilitate public access to the countryside

## Value for Money

- Collection of council tax and business rates
- Financial services ensure that there are satisfactory arrangements for the proper administration of the Council's financial affairs in accordance with regulatory requirements

To find out more information about the work of the Council visit the website [www.southhams.gov.uk](http://www.southhams.gov.uk)

# New houses now available at South Gate



Computer generated image of the apartments at South Gate



Typical Midas Homes interior

## Just released – a choice of four bedroom townhouses in Totnes.

- Built to Midas Homes' award winning standards.
- Contemporary kitchens with stainless steel integrated appliances.
- Ecohomes "Excellent" rating.

Two bedroom apartments from: £214,950  
Four bedroom homes from: £399,950

Please note that these homes will only be available to people who have lived in Devon for the last 3 years, or for 7 years out of the last 20 years, for the first 15 weeks of marketing.



Selling Agent



01803 847979

Sales and Marketing Suite now open  
Thursday to Monday, 10am - 4pm.  
Leechwell Street, Totnes.

01803 863648 [southgatetotnes.com](http://southgatetotnes.com)

Information correct at time of going to press

