

# South Hams

The magazine from South Hams District Council

Issue 2, Winter 2005/06

## Totnes Southern Area

Affordable housing  
boost for historic town

## Shaping the future of the South Hams

How you have helped in the  
district's development

## Rediscover local attractions

Become a local tourist



South Hams  
District Council



## Experience the most exclusive kitchen and bedroom showroom in the South West



At Bradbury's you will discover the widest range of exclusive kitchen and bedroom furniture in the South West. With over 16 fully fitted exclusive ALNO kitchens on display and 5 Hülsta fitted bedrooms you will be fired with imagination for your own home. Visit us soon and you will be guaranteed a warm welcome and excellent service from our award-winning designers.



**BRADBURY'S**  
Kitchen and Bedroom Centre

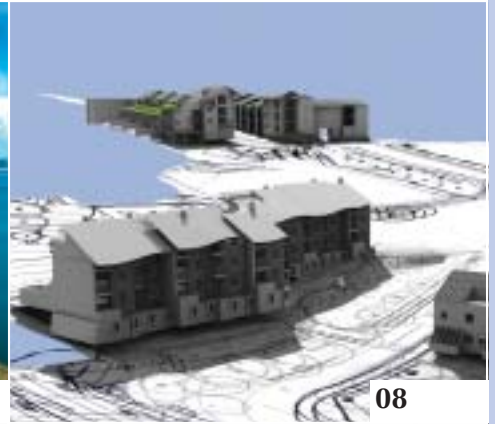
Open Monday – Saturday, 9am-5pm. Closed Sundays  
Tel: 01392 825940 [www.bradburysltd.co.uk](http://www.bradburysltd.co.uk)  
Bradbury's, Denbury Court, Matford Park, Exeter EX2 8NB  
Also at: Ilsham Road, Torquay Tel: 01803 290555



04



14



08

# South Hams

Issue 2, Winter 2005/03



I hope that you enjoyed the first issue of South Hams magazine back in October.

In the pages of this issue, you will find news from around the district, a special feature on the Totnes Southern Area development, information on how to be a local tourist and details of our new Customer Services team. We have also introduced a Business section, with South Hams specific news and information.

In addition to all this, our district wide events listings will help you enjoy all the South Hams has to offer, so keep us on your coffee table until spring!

Wishing you a wonderful 2006,

Jenny Bishop  
Editor

■	<b>Front cover feature</b>	11	Customer Services: more flexibility for you
8	Totnes Southern Area	■	<b>Business</b>
■	<b>News</b>	12	Safer Food, Better Business
04	Stories making headlines around the South Hams	12	Licensing success
■	<b>House, home and garden</b>	■	<b>Leisure</b>
07	The new Waste and Recycling scheme	14	Holiday Guide 2005
■	<b>Your council</b>	14	How to be a local tourist
10	Consultation 2005: the results	14	Events and activities

This publication is available in alternative formats, such as large print or a language other than English. Please contact us on 01803 861234 or e-mail [enquiries@southhams.gov.uk](mailto:enquiries@southhams.gov.uk)

## How to contact us:

South Hams District Council, Follaton House,  
Plymouth Road, Totnes, TQ9 5NE  
Office open: 08.00 – 17.00 Monday to Friday;  
t. 01803 861234  
f. 01803 866151  
e. [customer.services@southhams.gov.uk](mailto:customer.services@southhams.gov.uk)  
[www.southhams.gov.uk](http://www.southhams.gov.uk)  
Out of hours emergency number:  
t. 01752 776000  
ISSN: 1749-5172

**Editor in chief:** Jenny Bishop  
**Features Editor:** Elaine Hopkins  
*Advertising queries should be directed to:*  
**Publisher:** Debbie Johnson  
**Production Manager:** Berenice Howard-Smith  
**Advertising Sales:** Marie Brookes  
Manning Publishing Ltd, The Irwin Centre,  
Scotland Road, Dry Drayton, Cambridge CB3  
8AR. Tel 01954 212906 Fax: 01954 212105  
e. [info@manpublishing.co.uk](mailto:info@manpublishing.co.uk)

This magazine is printed on paper which is:



Wood fibre from sustainable forests



Fully recyclable and biodegradable



Elemental Chlorine Free

The opinions and views expressed in South Hams magazine are not necessarily those of South Hams District Council or Manning Publishing Ltd. All data contained in advertisements being subject to the Advertising Standards Authority guidelines, are accepted by us in good faith at the time of going to press.

Reproduction of editorial is strictly prohibited without prior permission from the publisher. All rights reserved copyright © 2005.

Front cover photography by Sarah Pearce

## Could it be a Beacon hat trick?

SHDC has been short listed for yet another Beacon Status award from the Government – this time for Waste and Recycling!

The Beacon Status scheme is a government initiative to celebrate innovation and excellence in local government. We have already achieved Beacon Status for Sustainable Tourism (2004) and Affordable Housing (2005) and are delighted to have made the shortlist this time in the seventh round of Beacon Awards.

We will now progress to the next stage of the selection process, which includes site visits and presentations. We will find out if we have achieved Beacon Status for Waste & Recycling in March...so watch this space for news!



2004-2005  
Promoting Sustainable Tourism  
2005-2006  
Affordable Housing

## Thank you!

We would like to say a huge thank you to all residents who have done so brilliantly using the new waste collection scheme which we began introducing during in 2005.

Householders have been doing a fantastic job so far and the organic waste that has been collected from your brown bins has made some really good quality compost. The items that we have collected in the blue and clear sacks have been sent for recycling and will be made into new products.

This new scheme has been a huge change for all householders but *it is working* and your efforts mean that more waste than ever before is saved from landfill.

## South Hams scoops two international tourism awards

In the last edition of 'South Hams' magazine we reported that a number of South Hams tourism projects had been short listed for the prestigious First Choice Responsible Tourism Awards. We can now reveal that three of these projects went on to pick up an award.

The three South Hams winners were:

- The Venus company - overall winner in the 'Best in Marine Environment' category
- The South Hams Life into Landscape project - highly commended in the 'Best in protected area/park' category
- Greenway Gardens responsible travel plan - highly commended in the 'Best mode of transport or initiative' category

The 'On The Right Tracks' visitor payback initiative was also short listed for the 'Best for innovation' category but did not receive an award.

These awards are in their second year and celebrate tourism ventures that make a positive contribution to conservation and the economies of local communities while minimizing any negative impacts of tourism.

The awards were presented at The World Travel Market in London's Docklands in November 2005.



## Investors in People

South Hams District Council is celebrating after retaining our 'Investor In People' (IIP) award for a fifth time.

The Investor in People Award is an external assessment of the way in which the council continually trains and develops its employees to ensure a high quality of services for residents.

SHDC was the first council in Devon to achieve IIP status back in 1993. We have undergone four reviews since then and have held our IIP status now for 12 years.

To obtain the award, we had to undergo an external review where members of staff and councillors were interviewed. The assessors identified strong team commitment, good communication systems, strong leadership and a strong ethos around staff training and development as areas in which we excelled.

The standards the council is expected to achieve are constantly being raised and revised so we are delighted to have met the challenge.



INVESTOR IN PEOPLE

Be Part of This Success



To arrange your  
Marketing Proposal Meeting

**Luscombe Maye**

Totnes 01803 869920  
Kingsbridge 01548 857474  
South Brent 01364 646170  
Modbury 01548 830831  
Ivybridge 01752 690077

# Gabriel Court Hotel



## 'Dine & Stay'

### The complete experience

Dine in the Churchward Restaurant from the a la carte menu and take advantage of staying over night from only £50 per couple, including continental breakfast. (available for one night only & subject to room availability & two sharing)

### Three Night Break 4 January - 12 April 2006

Spend a fabulous 3 night break at the Gabriel Court hotel including Dinner in our award winning restaurant and bed & breakfast based on 2 people sharing.



**Gabriel Court's Churchward restaurant** is considered to be one of the finest in the area, and with its AA Two Rosettes you can look forward to wining and dining in style with friends and family.

The restaurant offers a mouth watering and varied menu which changes according to the seasons offering a contemporary International menu which makes full use of local produce. In season, the restaurant uses herbs, fruit and vegetables fresh from the hotel's gardens. Diners may enjoy pre-dinner drinks in the hotel bar and after dinner coffee in the comfort of the lounge, or make the most of the long, warm summer evenings, in our beautiful gardens.

Whatever the occasion, whatever the time of year, whether it is for lunch, dinner, or one of our afternoon cream teas, you can be assured a truly memorable time at the Churchward restaurant at the Gabriel Court Hotel

Gabriel Court Hotel, Stoke Gabriel, Nr. Totnes, South Devon, TQ9 6SF  
Telephone 01803 782 206 [www.gabrielcourt.co.uk](http://www.gabrielcourt.co.uk)



## delicious dining in Dartmouth

### River Restaurant

Weekly Lunch Menu available at £10.00 per person for 2 courses available from Mondays to Saturdays.

Booking is essential.

### River Lounge

Winter Lunch Menu available - Buy any main course and get a starter or dessert free of charge available from Mondays to Fridays.

Both offers commence on 2 January 2006 and run until end of March.

**DART MARINA**

HOTEL & APARTMENTS

Sandquay Road, Dartmouth, Devon TQ6 9PH. Tel: 01803 832580

[www.dartmarinahotel.com](http://www.dartmarinahotel.com)



**YOUR LOCAL INDEPENDENT  
DIY & BUILDER'S MERCHANT**

Committed to bringing lower prices  
but a high standard of service

**& SHOWROOMS**

**BESPOKE KITCHENS  
MADE TO MEASURE**



**FREE  
CAD DESIGNS**



**BATHROOMS**  
from well known brands such as... **Hera**

**SOLID REAL WOODEN FLOORING  
AND QUALITY LAMINATES  
TO SUIT ANY BUDGET**

Collingwood Road, Townstal Industrial Estate, Dartmouth TQ6 9JY  
TEL: 01803 834822 FAX: 01803 834394  
[www.rgcbuildingsupplies.co.uk](http://www.rgcbuildingsupplies.co.uk)



**Devon HearingCare**  
Open up your world

**It's good to hear!**

Don't let hearing loss get in the way of your ability to enjoy life.

Call **Devon Hearingcare** for a FREE hearing evaluation and expert advice on the latest hearing systems.

**01548 852852**

Home visits by arrangement  
10 Fore Street, Kingbridge, Devon TQ7 1NY  
www.devonhearingcare.co.uk



Lynn Fabianow  
BSc (Hons) MSc  
Hearing Aid Audiologist





**THE WHITE HART HOTEL**  
MORETONHAMPSTEAD

**Good Traditional Food.**

Please call for Winter & Spring Breaks  
or look at our website - [www.whitehartdartmoor.co.uk](http://www.whitehartdartmoor.co.uk)

The Square, Moretonhampstead Devon, TQ13 8NF  
Email: [enquiries@whitehartdartmoor.co.uk](mailto:enquiries@whitehartdartmoor.co.uk)  
Tel: 01647 441340 Fax: 01647 441341



**Save Money, Save Energy,  
Save the Environment**

Sirena Environmental can help you with environmentally friendly energy solutions for your home and business:

- Solar Hot Water Systems
- Solar Swimming Pool Heating
- Ground & Air Source Heat Pumps
- Solar Electric Photovoltaic Panels
- Wind power systems

Tel: 01548 898248  
e-mail: [info@devonsolar.co.uk](mailto:info@devonsolar.co.uk)  
[www.devonsolar.co.uk](http://www.devonsolar.co.uk)



Member of the Solar Trade Association



Over 300 holiday properties in & around Salcombe, Dartmouth and throughout the beautiful South Hams coast & countryside.

Thinking of letting your holiday home? Free Brochure and Owners Guide available.

Contact our local teams in Salcombe (01548) 843773 Dartmouth (01803) 839499 Kingsbridge (Hope Cove & South Hams villages) 01548 852572

[www.coastandcountry.co.uk](http://www.coastandcountry.co.uk)

**take the hassle out of organising**

- Your Children's Birthday Parties
- Adults' Birthday, Anniversary & Wedding Celebrations
- Corporate Events: Golf Days & Corporate Parties
- Weekends away for you & your family
- Buying Special Gifts • Estate Agents and Movers

When you need that occasional help, let me take the hassle out of your life.



**Hassle free**

personal planning • event organisation

Mobile: 07970 451727  
Tel: 01392 433372  
Email: [marie@hasslefreelife.net](mailto:marie@hasslefreelife.net)  
Web: [www.hasslefreelife.net](http://www.hasslefreelife.net)



**LHR LTD**

**LHR Rendle**

OLD STATION YARD, KINGSBRIDGE, DEVON TQ7 1ES  
TEL: (01548) 852406 FAX: (01548) 852596

- Flooring • Carpets • Wood • Laminate •
- Tiles for walls and floors • Lamps •

We are a local family business that has provided the South Hams with a professional and expert service for 35 years.

Visit our lovely, spacious showroom at the Old Station Yard, Kingsbridge. With plenty of parking, you can relax and enjoy your shopping.

**Telephone: 01548 852406 enquiries@lhrendle.co.uk**

**The Ultimate Choice in Floor Covering**

[www.classicfloorspaignton.co.uk](http://www.classicfloorspaignton.co.uk)

Your Local Independent Flooring Specialists For:

- Carpets
- Commercial Floor Coverings
- Vinyls
- Timber Flooring
- Existing Timber Floors Resurfaced
- Non Slip Altro Safety Flooring
- Laminate Flooring
- Vinyl Cladding To Walls



We offer a professional supply & fitting service to ensure complete satisfaction.

**Classic Floors by Newton Abbot Flooring**

Tel: (01803) 525177, 523784 Fax: (01803) 520359 127-129 Winner Street, Paignton, Devon TQ3 3BP



**THE KITCHEN SHOP**

- Specialists in fine kitchen accessories
- High quality cooking utensils
- Bakeware for every occasion
- Cookware for both the discerning amateur and professional cook.
- Knives from the world's leading names.

**It is our pleasure to post worldwide.**

22 Foss Street, Dartmouth,  
Devon TQ6 9DR  
Tel: 01803 834747  
Fax: 01803 835566

# New Waste Collection Scheme

Around 34,000 tonnes of rubbish are produced every year in the South Hams - the equivalent weight of nearly 600 African elephants! Most people fully support the environmental necessity to reduce our waste mountain. They also appreciate that it is socially responsible to recycle to protect the environment for future generations – and loads of things can be made from your rubbish, so why waste it? Besides, no one wants to have another landfill site in their area.

The fact is that we can easily reduce

our waste by recycling and reusing more, but there has not always been the collection schemes to help householders to sort their waste. This all changed in 2005 with the introduction of a new waste collection and sorting scheme. The scheme is being implemented because of the European Landfill Directive, which requires councils to divert waste that is biodegradable, or rots of its own accord, away from landfill.

Since January 2005 around 60% of homes in the district have joined the new

waste collection scheme. Phase 5 will start in February and focuses on many of the areas, including some very rural villages and hamlets, which have never received a recycling collection before.

Part of the scheme is funded by Government bodies DEFRA and WRAP and means that SHDC does not pay for the containers and new vehicles needed for the change over.

What goes where is shown in the table.

## WHAT GOES WHERE?

	Brown bin & kitchen caddy	Blue sack	Clear sack	Grey bin
<b>✓ YES please</b>	<p><b>Kitchen/food waste</b> All raw and cooked food waste including: meat, fish, egg shells, vegetable peelings, paper kitchen towels, bread etc.</p> <p><b>Garden waste</b> Grass cuttings, hedge clippings, weeds, leaves and small branches, straw.</p> <p><b>Brown cardboard</b> Large pieces of brown cardboard or excess cardboard, that may not fit into the recycling sacks.</p> <p><i>Please keep your caddy in the kitchen and then empty the contents into your brown bin.</i></p>	<p><b>Paper and cardboard</b> Newspapers and magazines, envelopes (including windowed), catalogues, telephone, directories/Yellow Pages, wrapping paper, junk mail, toilet roll tubes, cardboard packaging (e.g. cereal, frozen food and washing powder boxes), corrugated cardboard, greetings cards printing/writing/shredded paper.</p>	<p><b>Plastic bottles and cans/tins</b> Plastic bottles only (no lids) e.g. fizzy drink, shampoo bottles and washing-up liquid bottles.</p> <p><b>Mixed food/drink tins and cans</b></p> <p><b>Clean aluminium foil</b></p> <p><b>Empty aerosol cans</b> <i>Please rinse all plastic bottles and tins/cans and squash where possible.</i></p>	<p><b>Material that cannot be recycled or composted</b> (this material will be buried in landfill) e.g. disposable nappies, cold ashes, polystyrene, plastic lined containers or cartons, plastic bags, plastic films and wrappings, crisp packets, glass bottles/jars*, wallpaper and tissues.</p> <p><i>*Glass can only be recycled at your local recycling bank.</i></p>
<b>✗ NO thank you</b>	<p><b>No plastics</b> (all types) Plastic cannot be composted</p> <p><b>No soil/stones/rubble</b></p> <p><b>No large branches</b> (over 4 inches thick)</p> <p><b>No other rubbish</b> ANYTHING made from plastic, glass or metal. No dog or cat faeces. No cartons or plastic lined containers.</p> <p><b>No textiles</b> e.g. clothing</p>	<p><b>No wet or dirty paper</b></p> <p><b>No wallpaper</b></p> <p><b>No Cardboard cartons</b> e.g. Tetrapack, juice, milk or soup cartons</p>	<p><b>No other plastics</b> e.g. food trays, polystyrene, crisp packets, plastics wrapping, carrier bags, lids from plastics bottles, yoghurt pots, flower pots.</p> <p><b>No other metal objects</b> e.g. paint tins.</p> <p><b>NO GLASS BOTTLES/JARS</b></p>	<p><b>Please DO NOT put any items that should be in the brown bin or recycling sacks into this container.</b></p>

There is still a weekly collection from households, but the wheeled bins are collected alternate weeks at the kerbside.

If you are already composting successfully at home, that's fantastic and there's no need to use our scheme unless you have too much to manage! Similarly, if you make regular trips to the the local Recycling Centre then that's fine too – everything helps. In fact, glass and textiles still need to be taken to Recycling Centres as they are not included in the kerbside collection scheme.

It's not difficult, but it does mean that everyone has to invest some time and effort to get into a new routine. The first areas on the scheme are now achieving over 30% recycling/composting – a significant increase on our previous average of 25%.

We're doing all we can to make the

## Don't let Devon go to waste

changes as smooth as possible and to meet any particular requirements households may have, such as advising on where to put their bins, finding alternative solutions for those who really cannot accommodate wheeled bins and providing an assisted

service to those who really need it. We appreciate that this is a major change for most householders so our recycling helpline team is on hand and ready to help on 01803 861199.



# Totnes Southern Area

Developing a site of almost six acres in the centre of a town as individual as Totnes is no easy task. It's taken a combination of officers from South Hams District Council, the community of Totnes and a top class group of architects to formulate detailed plans for the site. The development will provide affordable housing, which is South Hams Council's top priority, while providing public open space and much needed car parking.

The council owned sites were unlocked for future development by the construction of the Southern Area Access Road in 1992. In 2002 an affordable housing scheme was completed on St Katherine's Way.

For such a major development, it has been important to find out the views and priorities of the local community. In 2004 a Totnes community group "Design Our Space" was formed with support from the council. The group held a series of public meetings and exhibitions and, with the backing of South Hams Council, employed local architects Harrison Sutton Partnership to prepare a concept statement. The key elements to emerge from the consultation process were the need for affordable housing for local people, the provision of public open spaces, sustainable development, the retention of valuable car parking spaces and the preservation of Totnes' historical features.

The council appointed Harrison Sutton Partnership as its architects, who then prepared detailed plans for the site. This ensured control was kept over the design and the quality expected by the community could be delivered. Working on each of the four sites, the architects turned ideas into concept drawings and over the course of a year these evolved into the designs submitted for planning permission.

The proposals for phase one of the Totnes Southern Area redevelopment focus on two areas – The Lamb and Heath Way.

## The Lamb

The Lamb is the road leading downhill from Cistern Street. It was built in the early 1990s, and cuts across Leechwell Street. On the north side of the street, the gap between the former

Crown and Anchor pub at 16 Leechwell Street and the property at 18 Leechwell Street will be infilled. The ground floor units could be used as a studio, gallery, office space or a retail unit while there will be two one-bedroom maisonettes above. Also on the north side there will be six two-bedroom town houses with integrated car parking. An apartment block will be sited at the eastern end.

On the south side will be four two-bedroom maisonettes with parking below and a first floor terrace. Behind these will be four two-bedroom maisonette town houses with private gardens. An apartment block will be at the east end.

Local stone will be used for some walls, facades will be white render and timber boarding, punctuated with balconies and projecting bays. A contemporary interpretation of local roofs will use dulled stainless steel or zinc rather than slate.

## Heath Way

The second area is Heath Way which leads up from St Katherine's Way to join South Street. On the east side the existing terrace called Moorashes will be extended, beginning with two three-bedroom, split-level town houses with gardens, followed by four two-bedroom maisonettes with gardens. Above each will be four single bed studio apartments with their own south facing terraces. The buildings will be rendered with timber cladding to the south which can either be left natural or painted.

On the west side of Heath Way there will be two terraces of five town houses on four storeys, providing four bedrooms and study with an open plan living area. A feature will be the wall-to-wall folding glass panel separating the main living area from the private enclosed garden.

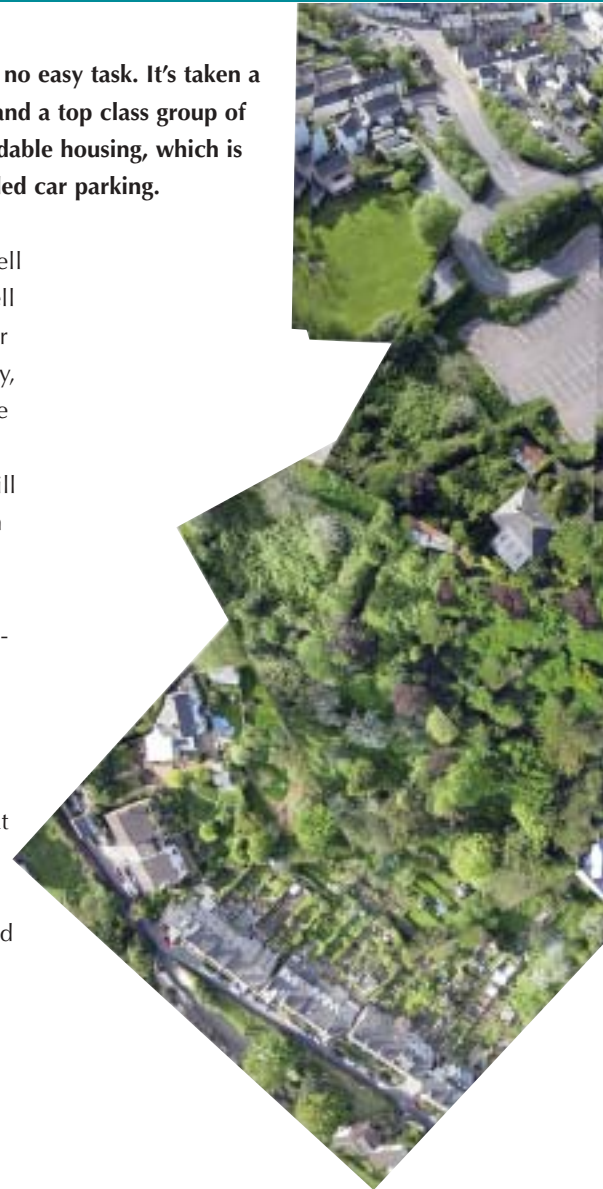
The outside of the houses will be

white stucco render with some masonry walls revealed, topped by natural timber boarding. The balconies and terraces will be stainless steel and glass.

## Next step

Detailed planning permission has been applied for and a decision is likely in March. The next stage will be to appoint developers to work with the council. It is likely that work could begin on phase one of the development in the summer and it's hoped that phase two will follow on. A major part of the proposal is the creation of a new public open space on the site of what used to be an orchard garden. A local landscape architect is currently drawing up plans for the one acre site will provide a haven for wildlife.

Included in phase two is the addition





of a second level or deck to the Nursery car park. The current Heath Way car park will be used for a mix of affordable and open market housing. Phase two is very much a future project and no decisions have yet been made about possible designs.

**Sustainability**

A clear message from the community consultations has been the importance of sustainability. South Hams Council aims to achieve an “excellent” rating for each of the four sites which would put them in the top 1% in the South West in terms of sustainability. The grading is

awarded by the Building Research Establishment – a group of scientists and building professionals working to improve the quality and sustainability of the built environment. They measure sustainability using the ‘EcoHomes’ rating system which looks at various categories including materials used, energy use, reliance on transport, ecological balance, pollution, health and wellbeing and water usage. Some examples of the ingredients looked for in a sustainable development include the use of redundant brownfield sites; how existing infrastructure has been utilised; the density of the development; and how far the development is from retail and commercial activities. Elements of the development’s design are also taken into account including visual impact, thermal efficiency, the level of insulation, use of solar energy and alternative energy sources, provision for recycling refuse and rain water harvesting.

**Archaeology**

South West Archaeology was commissioned by South Hams Council to carry out an archaeological evaluation of two sites on either side

of Heath Way and a site alongside The Lamb.

Both sites yielded some interesting finds. At the Lamb evidence of medieval suburbs was found and later commercial uses. Among the finds were various pottery and glass fragments dating back as far as 1250. Some of these fragments were of imported pottery, but evidence was also found of locally made pottery dating from around 1500 including fragments of bowls, ridge tile jars and cooking pots. At the Heath Way sites fewer pottery fragments were uncovered. The archaeologists found evidence of ancient water courses and water channels but were unable to conclusively link these finds to the historic Leechwells or to the medieval Leper Hospital.



Design for the Lamb

**WINTER SALE**

SAVE 20% ON ROMAN BLINDS

20% OFF REAL WOOD VENETIAN BLINDS

SAVE 15% ON ALUMINIUM VENETIANS

UP TO 55% OFF VERTICAL BLINDS

TEL: 01752 300923 [www.ukblindsdirect-plymouth.co.uk](http://www.ukblindsdirect-plymouth.co.uk)

**UKBlindsdirect**

NEVER EVER BEATEN ON PRICE • FAST LOCAL SERVICE  
FREE FITTING • 5 YEAR GUARANTEE

**Tally Ho! Coaches**

Local Family Company

Proud to have served the people of the South Hams since 1926

Local Bus Services and Quality Coach Hire

01548 853081 [www.tallyhocoches.com](http://www.tallyhocoches.com)

## Shaping the Future of the South Hams

As promised in the first edition of 'South Hams', here are the initial results of the South Hams Community Strategy review which took place across the district during the summer of 2005.

We held road shows at Malborough Village Hall, Totnes Civic Hall, South Dartmoor Leisure Centre, Ivybridge and Townstal Community Hall, Dartmouth in July. The road shows were followed up by consultations at each of the Farmers

Markets in the district and at the Yealmpton and Totnes Shows.

We conducted face-to-face interviews with under 35s. Young people from across the district participated in a youth consultation event held at the new Ivybridge Youth Centre in October, to coincide with Local Democracy Week.

Here are the summarised results of a questionnaire we distributed at the events:

### How do you rate these key aspects of living in the South Hams?

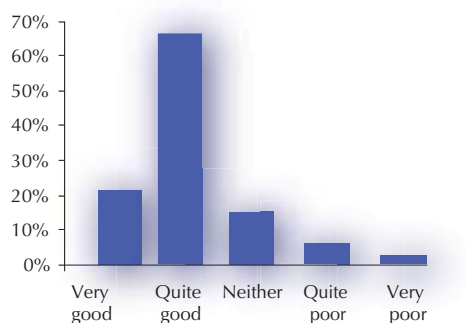
Aspect	Very good (%)	Quite good (%)	Overall (%)
Quality of life	45	51	96
State of the coast and countryside	44	51	95
State of the towns and villages	15	68	83
Safety in our community	15	60	75
Health in our community	13	61	74
Transport opportunities	2	21	23

- Most respondents rated the South Hams 'good' for the general quality of life, the natural beauty of the area and for aspects of life that need 'services'.
- Transport opportunities stand out as an obvious area for improvement.

- The majority of respondents (83%) rated their main centre as 'good'. South Brent and Totnes came out as the top two towns rated for their quality.

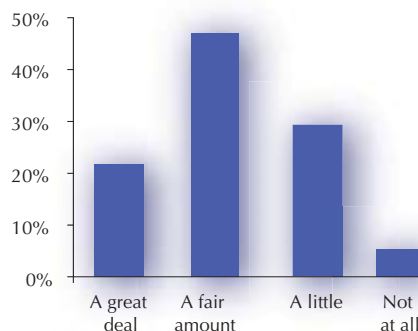
### How would you rate the quality of your main town or village centre?

The quality of centre



### To what extent do you feel part of the community?

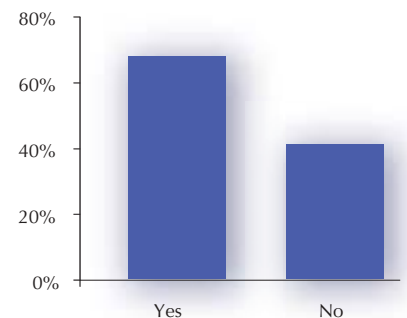
Feel part of the local community



- People under 25 were four times more likely to say that they do not feel part of the community 'at all' and twice as likely to say they only feel part of the community 'a little'.

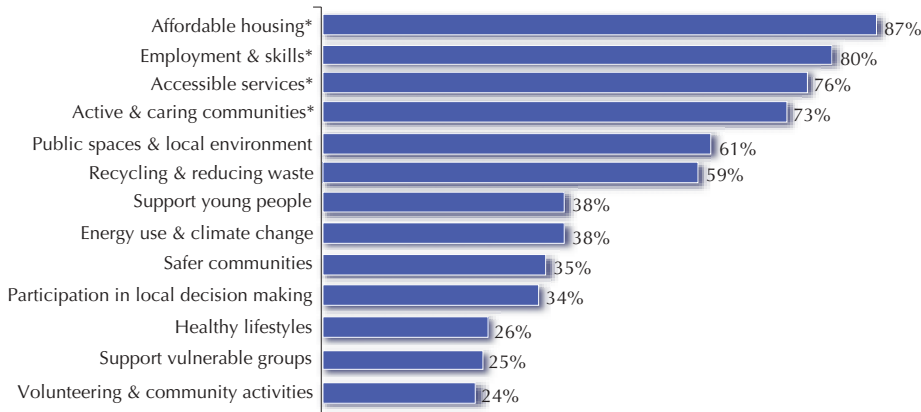
### Have you been involved in any voluntary activity that benefits your community?

Involvement in voluntary activity



- People over 55 were far more likely to say they had been involved in voluntary activities, with people under 35 being far less likely, particularly those under 25.
- When asked why they had not been involved, people under 35 were far more likely to indicate that they were 'unaware of local opportunities', whilst people over 65 were much more likely to state 'ill-health' as the reason.

When presented with a range of issues for the district, most respondents thought all four of the original South Hams Community Strategy themes (marked with \*) should remain. There appear to be three distinct levels of support regarding the introduction of any new themes into the revised Community Strategy.



As a result of the consultation activities, the proposed priority themes for the revised South Hams Community Strategy are suggested as:

- **Affordable housing**
- **Competitive local economy**
- **Community vibrancy**

This is likely to incorporate access to services and transport opportunities as these remain key issues, particularly for young people. We hope to expand upon this theme to look at how we can encourage greater involvement in community activities.

- **Quality natural and built environment**

Although we all agree that the quality of the South Hams environment is good, we cannot afford to be complacent. The consultation results show that 'Enhance and protect our public spaces and local environment' was the most popular response for a new theme.

The four suggested themes are interlinked and will require a partnership approach to

### Summary of youth consultation activity:

Youth Consultation Results in Priority Order
Cost of public transport to education, work and leisure
Quality jobs
Community involvement
Clean environment
Health issues

delivery in order to generate most benefit for the communities of the South Hams.

### Where next?

We will shortly be consulting you on the draft Community Strategy, further details and an on-line questionnaire will be available at [www.southhams.gov.uk](http://www.southhams.gov.uk)

We now need to work together to develop detailed and resourced 'Action Plans'. The role of all those involved in contributing to these Action Plans cannot be underestimated and contributions will be vital at a local level within towns and villages, and within communities of interest. The next Community Partnership Forum, to be held in early February 2006, will start to look at this process.

If you or your community group would like to get involved in the next stage of action planning, please get in touch with the Community Development Team on 01803 861234.

## South Hams Customer Service Team launches

Your needs are critical to the way in which we shape our services. Because of your feedback, we are changing the way we work.

Our brand new Customer Service Team looks after all visitors to Follaton House reception; provides cash office facilities; and deals with customer calls for some of our services.

This new way of operating means:-

- a consistent level of service, delivered by professional customer service advisors over the full range of council services
- more of your enquiries dealt with by a single person the first time you call
- extended opening hours at Follaton House for visitors and callers are now **8am -5pm Monday to Friday**
- increased access to council services over our enhanced website

These changes will enable us to be more efficient in how we deliver services, providing better value for you - the South Hams council tax payers.

The Customer Service Team also manages our website, which provides information and services 24 hours per day. The website is proving extremely popular with our customers, usage of the site soared by over 800% in 2005, with many people taking advantage of our convenient online payment system.

If you want to get in touch with us about anything, even to give feedback on our customer service, then all you need to do is :-  
 call 01803 861234  
 email [customer.services@southhams.gov.uk](mailto:customer.services@southhams.gov.uk)  
 visit Follaton House  
 or [www.southhams.gov.uk](http://www.southhams.gov.uk) for 24 hour access to information on the whole range of SHDC services



**Safer food  
better business**

## Safer food means better business

Each year in the UK there are approximately 900,000 incidences of food poisoning, resulting in hundreds of deaths and a total cost to the economy of around £1.5 billion.

From January 2006 food businesses are required to put procedures in place to help manage food safety and make sure that the food they produce will not cause illness to customers.

To help companies comply with these new rules the Food Standard Agency (FSA) has awarded £79,000 to South Hams and Teignbridge District Councils to help train local catering businesses in food safety.

The FSA, along with representatives of the food industry and local authorities, has developed a toolkit for small catering businesses, which will help them meet the new legal requirements.

The toolkit called 'Safer Food Better Business' - or SFBB for short - adopts an innovative approach to food safety management and is practical and easy to use by even the smallest catering company. It uses 'safe methods' fact sheets which relate to the key areas of food safety such as cross contamination, cleaning, chilling and cooking and also includes a diary for record keeping purposes.

We will be contacting local food businesses directly to give them more information about SFBB and the free training courses and one to one help on offer throughout the year.

For more information on the SFBB toolkit please visit the FSA's website at [www.food.gov.uk](http://www.food.gov.uk)

## Licensing success secures visit from MP

South Hams District Council was the destination for James Purnell MP, Minister responsible for Licensing, Creative Industries and Tourism, when he visited Devon in October 2005.

Mr Purnell made the trip to Follaton House, HQ of South Hams District Council, to congratulate our licensing team. The licensing team has worked tremendously hard throughout the recent change in alcohol licensing laws and was one of the most effective licensing teams in the country in encouraging people to apply early for the new licences.

James Purnell MP said, "The local council has worked incredibly hard to process the 550 licence applications they have received so far - and I'd like to thank them for that. They have done it by being very well organised...and being extremely helpful."

Mr Purnell followed the visit with lunch at the Royal Seven Stars in Totnes where representatives from South Hams District Council, local tourism and creative industries, joined him.

## Devon Renaissance

South Hams District Council has been one of the key players in developing the Devon Renaissance programme. Funded through the South West Regional Development Agency, European Objective 2 and other public and private funding streams, the programme covers the rural districts of the South Hams, West Devon, North Devon and Torridge. Devon Renaissance focuses on projects that will improve business skills and business development; improve physical capital and business infrastructure; promote innovation, productivity, technology and environmental efficiency; and increase household income by stimulating enterprise.

The South Hams will benefit from three projects, which have already received approval:

- The Redundant Buildings Grant is a new scheme to encourage the productive re-use of local redundant buildings. It will not only safeguard existing jobs, but also create new opportunities and support the development of the local rural economy.

- Technology Transfer aims to improve the competitiveness and productivity of small and medium-sized enterprises through sharing best practice. Businesses anticipating a step-change in manufacturing or product development will be able to access support, market research and development, technical advice and guidance from the MoD and defence industry's science and technology resources.

- The Rural Skills project will provide free customised training to deliver nationally recognised qualifications in a wide variety of skills such as stone walling, food hygiene, hedge-laying, crafts, computer literacy and many more. The project will address an absence of skills in micro and small businesses that are a barrier to competitiveness and help make individuals more employable in a changing job market.

For further information please contact Gaynor Hughes on 01803 861234, Devon Renaissance on 01837 658643 or visit [www.ruraldevon.org](http://www.ruraldevon.org)

Stylish  
Solutions...



**ANSELL & KILLICK**  
QUALITY BATHROOMS LTD

50-52 Winner Street, Paignton  
tel: 01803 554 867 [www.ansellandkillick.co.uk](http://www.ansellandkillick.co.uk)

Can't get on the  
housing ladder?

Want a home of  
your own?

Property prices  
too high?

Have you thought  
about Shared Ownership?

Coming Soon in 2006

Tor Homes, the affordable  
housing provider, is pleased  
to offer a selection of  
apartments, flats and  
houses in the South Hams.

If you would like to find out more about these new  
developments and shared ownership, please ring

Deborah Wilson, Home

Ownership Co-ordinator for Tor  
Homes on 01803.869626



## The Holistic Health Practice Ltd

How do you value your health?

Illness takes time to reach the symptom stage. Often there have been several minor indications on the way, but we are taught to ignore these, dismissing them as being 'nothing'. However, there comes a time in everyone's life when these smaller indications reveal a pattern which needs greater attention in order to feel that vital energy once more. This is what we term 'illness'.

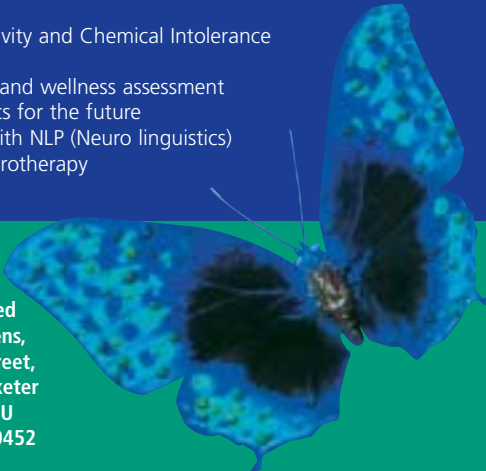
Taking preventative steps in maintaining good health is easier than trying to recover that lost vitality.

With the help of kinesiology and the SkaSys system you are able to determine how healthy you really are. You will be able to find areas within your body that require adjustment and balance. This is a vital step to take before illness becomes a problem. We only have one body and often only one chance for health.

Here are some of the services we are able to offer you:

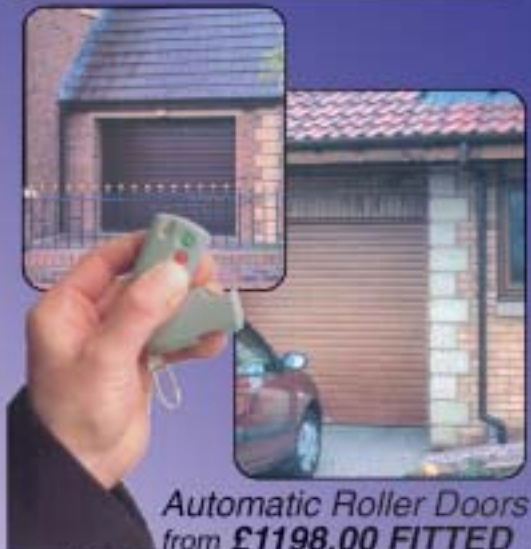
- Food Sensitivity and Chemical Intolerance Testing
- Kinesiology and wellness assessment
- Bioenergetics for the future
- Coaching with NLP (Neuro linguistics)
- Colonic Hydrotherapy

The Holistic  
Health  
Practice Limited  
Victoria Gardens,  
Dinne Ford Street,  
Thorverton, Exeter  
Devon EX5 5NU  
Tel: 01392 860452



**DYNASTY DOORS**

Automatic Roller Garage Doors



Automatic Roller Doors  
from **£1198.00 FITTED**

- Safe & secure • Stylish & convenient
- Simple to operate auto key fob opening
- 12 colour options • Low maintenance

**01752 895444**  
Filtam Moor Ind. Est. Ivybridge

Please call for opening times

The South Hams really is somewhere special to live, work and play. So why not make some time to enjoy one of the many interesting and exciting events taking place around the district over the next few months...

## FEB

- Sat 4th **Kingsbridge Farmers Market**, Town Square
- **Staverton Snowdrop stroll** – Staverton Church, 1pm, adults £3, children £1.
- Sat 11th **Dartmouth Farmers Market**, The Old Market Square
- **Nest box building** – 10am – 12 noon, The Bungalow, Brixham. Booking essential on 01803 606035.
- Thurs 16th **Over 50's business seminar** - 'Formulating the idea and where to find finance'. 9.30am – 3.30pm, Royal Seven Stars, Totnes. FREE, call 01548 857467 for details.
- Sat 18th **Ivybridge Farmers Market**, Glanville's Mill Car Park
- Tues 21st **Willow Harvest Celebration** – Learn how to coppice and sort the willow. Sharpham Estate, Ashprington. Booking essential on 018003 732799.
- The Ermington Players present a **Wild West Pantomime** – 'The Good, the bad and the ugly sisters'. W.I Hall, Yealmpton, daily at 7.30pm 21-25th Feb. Tickets £5 adults, £3 concessions, from Yealmpton and Ermington Post Offices.
- Thurs 23rd **Over 50's business seminar** - 'Basic business skills and basic business IT'. 9.30am – 3.30pm, Royal Seven Stars Hotel, Totnes. FREE, call 01548 857467 for details
- Sat 25th **Totnes Farmers Market**, Civic Hall (indoors)

## MARCH

- Fri 3rd **Torbay Symphony Orchestra** plays its spring programme of Scelsi's "Quattro pezzi su una nota sola", Sibelius' Violin Concerto (soloist Ofer Falk) and Schumann's 4th Symphony. 7.30pm St John's Church, Totnes. Tickets £8. Conces available.
- Sat 4th **Kingsbridge Farmers Market**, Town Square
- **Torbay Symphony Orchestra** Tickets

- £10 from the venue on 01803 839530.
- Sun 5th **Torbay Symphony Orchestra** plays its spring programme (details above) at the Princess Theatre, Torquay, 7.30pm. Tickets £10 from the theatre.
- Sat 10th **The Ermington Players** present a Wild West Pantomime – 'The Good, the bad and the ugly sisters'. Devonport Playhouse, Plymouth at 7.30pm daily until Sunday 11th March. Tickets £5 adults, £3 children, on 01548 830568.
- Sat 11th **Dartmouth Farmers Market**, The Old Market Square
- Sat 18th **Ivybridge Farmers Market**, Glanville's Mill Car Park
- Sat 25th **Totnes Farmers Market**, Civic Hall (indoors)

If you have an event in the South Hams during May, June or July '06 that you would like listed in the Spring 2006 edition of South Hams magazine please email [public.relations@southhams.gov.uk](mailto:public.relations@southhams.gov.uk)

*Disclaimer: South Hams District Council cannot be held responsible for the events listed above. We recommend you call ahead to check details where possible.*

## Holiday Guide '06

A stunning new holiday accommodation guide called "South Devon – A Guide to the South Hams", has been launched by SHDC to attract visitors to the area. The 40-page guide covers the district's diverse landscape, its heritage and gardens, local food and drink, beaches, festivals and attractions, all illustrated with stunning photography.

Several local businesses have won awards during the year; the guide singles out the New Angel at Dartmouth, (AA Restaurant of the Year 2005/6); the Dartmoor Union at Holbeton (Les Routiers Dining Pub of the Year 2006); and Sharpham's soft cheese (Taste of the West

Country's champion product of 2005). 50,000 copies of the guide will be distributed throughout the UK and will be available from to entice visitors to the district. Copies are also available by calling 01803 861219.

## Make a date to be a local tourist

- 4th & 5th February - Local Tourist Weekend
- 11th & 12th February - South Devon Explorer Weekend

If you live in the South Hams, you can take advantage of some fantastic offers from local attractions, hotels and restaurants! The Local Tourist weekend in February allows residents in the South Hams to experience the wide and unrivalled variety of attractions, accommodation and dining out opportunities available upon their doorsteps. South Hams Local Tourist Weekend is 4th and 5th February 2006, where South Hams residents can visit South Hams establishments. Look at the offers available, online at [www.southhams.gov.uk](http://www.southhams.gov.uk) or at Totnes, Dartmouth, Kingsbridge and Salcombe TICs, claim your vouchers and enjoy!

## How do I get vouchers?

Call: 01803 861219  
Email: [localtourist@southhams.gov.uk](mailto:localtourist@southhams.gov.uk)  
Online: [www.southhams.gov.uk](http://www.southhams.gov.uk)  
Visit: South Hams District Council at Follaton House, Totnes.

TICs in Totnes, Dartmouth, Kingsbridge and Salcombe (please bring proof of residency (driving licence, passport or utility/council tax bill))

As well as being a local tourist, you can also be a South Devon Explorer on the weekend of 11th and 12th February. Businesses with offers for the Local Tourist weekends in Torbay, Teignbridge or the South Hams will open their gates to residents from all three districts who have requested vouchers, so you can sample what is on offer in the rest of South Devon. You will automatically receive the Explorer vouchers when requesting the Local Tourist Weekend vouchers.

## We've built the place...



Whatever you have read or heard about the newly refurbished Rose & Crown, there is only one way to discover if it lives up to expectations. Call in for a drink and perhaps a bar snack (there is no need to book) or, better still, take the plunge and reserve a table in either of our fabulous restaurants (booking is very much advised to be sure of a table).



## ...you'll build our reputation

Rose & Crown 01752 880223 [www.theroseandcrown.co.uk](http://www.theroseandcrown.co.uk)  
Seafood Restaurant 01752 880502

## Come in from the cold with McCarthy & Stone



### Be warm and cosy this winter

Why not make a move to a cosy new McCarthy & Stone retirement apartment this winter? With economical heating and double-glazing throughout, you'll be amazed just how little your new home will cost to run. Drop by for a chat and a warm drink or call us today.



### Ivybridge

Grosvenor Court,  
Western Road

Telephone  
01752 896796

Prices from  
£169,950

Open everyday  
10.30am – 5.00pm



◆ Lift ◆ 24-hour Careline ◆ House Manager ◆ Intruder & smoke alarm

*Britain's Leading Retirement Builder*

[www.mccarthyandstone.co.uk](http://www.mccarthyandstone.co.uk)

## STOVER SCHOOL Newton Abbot

Day, Weekly & Full Boarding.  
Girls & Boys 3 to 18 years

'Where Individuals Shine'



Excellent GCSE  
and A level  
results



Ask about our "Taster Days"



NEW £1.4m  
science block  
and classrooms

### Open Afternoon

Wednesday 8th March  
2pm - 4pm

"Come and see what  
Stover can offer your  
child."

For more information please  
contact The Registrar.

tel: 01626 354505  
email: [mail@stover.co.uk](mailto:mail@stover.co.uk)  
[www.stover.co.uk](http://www.stover.co.uk)

Mixed Nursery and Pre-Prep  
Aged 3-7. A safe, nurturing and  
fun environment to learn in.

Prep School  
Aged 7-10. Girls and boys  
taught in single sex classes.

Senior School  
Aged 10-18. Girls and boys  
taught in single sex classes.

- Small class sizes
- Extensive After-school clubs and activities
- Outstanding art, music and sport departments

## New patients welcome

### General and cosmetic dentistry

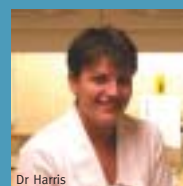
- Sympathetic dental treatment
- NHS dental service for children
- Implants, crowns, veneers inlays bridges
- Hygienist plus a qualified Oral Educator
- Same day emergency treatment



Dr Richardson

### Teeth whitening at unbeatable prices

- A brighter whiter smile in about 1 hour
- Guaranteed results using the finest materials
- 10 shades, pain free and no regression of colour



Dr Harris

### Facial rejuvenation

- Facial rejuvenation treatment provided by Dr Paul Richardson
- Offset the ageing process for lips, eyes and wrinkles
- Look and feel years younger
- All treatment undertaken in a relaxed and friendly atmosphere
- Comfortable reception and modern advanced surgeries
- Extensive private car parking, convenient and level easy access close to town centre
- Interest free credit if required

Brixham's longest established dental practice



Brixham Dental Practice 19 New Road, Brixham TQ5 8NB Telephone 01803 853980

# James Holland INTERIORS



...it's in our nature

bespoke kitchens, bathrooms & bedrooms  
**showroom open now**  
10am till 5pm

**James Holland**  
INTERIORS

Stidston Rural Ind. Park  
South Brent, Devon TQ10 9JT

**T 0870 199 3937**

part of the MDL group



conservatories • kitchens • staircases • windows • doors • purpose made furniture • restoration

## traditionally modern

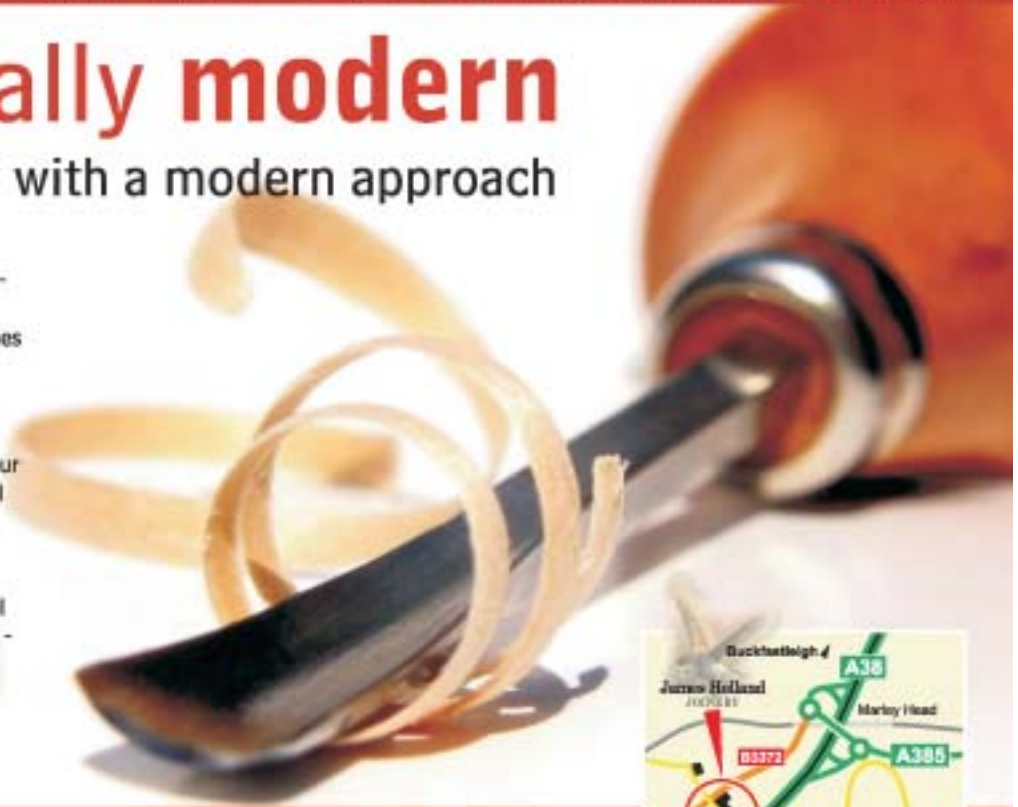
traditional joinery with a modern approach

James Holland Joinery have been making all types of furniture for 10 years - from small one-off designs to complete house installations, from traditional finishes to the ultra-modern minimal architecture that is the fashion today.

Our workshop has the latest equipment which allows us to combine the skills of our master joiners with the accuracy of digital woodworking technology.

We manufacture, among other things, Board Room tables, office desks, technical furniture, conservatories, doors, windows - in fact, any item in timber - if it can be drawn, it can be made.

Why not give us a call for further information or an estimate



**James Holland**  
JOINERY

**T 0870 199 3937**

Stidston Rural Ind. Park, South Brent, Devon TQ10 9JT