

# South Hams

The magazine from South Hams District Council

Issue 6, Winter 2006

**A COUNCILLOR...  
WHO ME?**

**HAVE YOURSELF  
A WASTE FREE  
CHRISTMAS**

**Win luxury  
stay for two at  
St. Elizabeth's**



South Hams  
District Council



**Experience the most exclusive kitchen  
and bedroom showroom in the South West**



At Bradbury's you will discover the widest range of exclusive kitchen and bedroom furniture in the South West. With an extensive range of ALNO fitted kitchens and Hülsta bedrooms on display you will be fired with imagination for your own home. Visit us soon and you will be guaranteed a warm welcome and excellent service from our award-winning designers.

  
**BRADBURY'S**  
Kitchen and Bedroom Centre

**ALNO**  
...the world of kitchens

**hülsta** 

  
Approved Member

Open Monday - Saturday, 9am-5pm. Closed Sundays  
Tel: 01392 825840 [www.bradburysltd.co.uk](http://www.bradburysltd.co.uk)  
Bradbury's, Denbury Court, Matford Park, Exeter EX2 8NB  
Also at: Isham Road, Torquay Tel: 01803 280555



# South Hams<sup>®</sup>

Issue 6, Winter 2006



South Hams  
District Council

## Can you believe that it is almost Christmas?

To help you prepare for this year's festivities we have pointers on how to cook the perfect poultry, advice on how to be 'green' and also a chance to win some quirky recycled Christmas tree decorations.

Looking further ahead, we have local elections in May where all the seats on South Hams District Council will be up for election. If you fancy yourself as a district councillor check out the article on p12 to see what is involved.

Midas Homes is giving you the chance to name the new Totnes Southern Area Development on p7 and don't forget to enter the competition on p21 to win a delicious Christmas Hamper, courtesy of The Local Food Company in Modbury.

As well as the six council priorities listed to the right, we are also introducing three themes – Climate Change, Needs of Young People and A Healthier Community. To see where we are working towards these objectives as well as our priorities, look out for the icons at the top of each page.

Wishing you a very merry Christmas and a happy New Year!

Jenny Bishop  
Editor

### ■ News

05 Stories making the headlines across the district

### ■ House, home and garden

06 Have yourself a waste free Christmas

08 Save pounds and the planet

### ■ Feature

10 Follaton House – so much more than just council offices

### ■ Your council

12 A councillor...who me?

13 Safety drive to save lives

14 Annual Report

### ■ Business

18 Celebrating success in 2006

18 Envision a more efficient future

19 Competition to win a luxury stay at St. Elizabeth's

### ■ Leisure

21 South Hams Youth Nights

22 Event and activity listings

Cover Photo by Martyn Norsworthy, Norsworthy Photography.  
For all aspects of photography in and around the South Hams,  
Tel.01548 531802 or log onto [www.norsworthyphotography.com](http://www.norsworthyphotography.com)

This publication is available in alternative formats, such as large print or a language other than English. Please contact us on 01803 861234 or e-mail [enquiries@southhams.gov.uk](mailto:enquiries@southhams.gov.uk)

## Council Priorities



### Affordable housing

Securing a supply of housing for local people at affordable levels



### Good jobs

Creating the conditions for the growth and maintenance of quality economic activity



### Retain the district's character

Maintaining the district's distinctive environment whilst enabling access and sensitive development



### A clean district

Maintaining a clean environment



### An accessible council

Work with others to improve access to key services



### Value for Money

Improve service performance in a cost-effective way



### Climate change



### Needs of young people



### A Healthier community

## How to contact us:

South Hams District Council, Follaton House,  
Plymouth Road, Totnes, TQ9 5NE

Office open: 08.30 – 17.00 Monday to Friday

01803 861234

01803 866151

[customer.services@southhams.gov.uk](mailto:customer.services@southhams.gov.uk)

[www.southhams.gov.uk](http://www.southhams.gov.uk)

Out of hours emergency number:

01803 867034

Editor in chief: Jenny Bishop

Features Editor: James Spencer

## Publishing Services

Manning Publishing Ltd, The Irwin Centre,  
Scotland Road, Dry Drayton, Cambridge CB3 8AR  
Tel 01954 212906 Fax: 01954 212105

e. [info@manpublishing.co.uk](mailto:info@manpublishing.co.uk)

[www.manpublishing.co.uk](http://www.manpublishing.co.uk)

For advertising sales contact

Manning Publishing Ltd Tel: 01954 212906



When you have finished with this magazine please recycle it.

This magazine is printed on paper which is:



Wood fibre from sustainable forests



Fully recyclable and biodegradable



Elemental Chlorine Free

All data contained in advertisements being subject to the Advertising Standards Authority guidelines, are accepted by us in good faith at the time of going to press. The opinions and views expressed in South Hams magazine are not necessarily those of South Hams District Council or Manning Publishing Ltd.  
ISSN 1749-5172

Reproduction of editorial is strictly prohibited without prior permission from the publisher. All rights reserved copyright © 2006.

# Funds boost South Hams tourism

A boost of £80,000 has been granted to SHDC's tourism department off the back of a hugely successful two year project that has brought benefits to hundreds of local businesses.

This £80,000 is European Objective 2 funding, which will be joint match funded by SHDC, Devon County Council, South West Tourism, the Countryside Agency and the Environment Agency, to provide a total of £160,000 which will be spent on an 18 month Sustainable Tourism Project working towards the following aims and objectives:

- Collecting information on best practice from South Hams green tourism businesses to share with other stakeholders
- Providing advice and support to existing South Hams green tourism businesses
- Helping green businesses to utilise their green status to develop new markets
- Bringing together South Hams tourism and rural crafts, arts and food and drink businesses

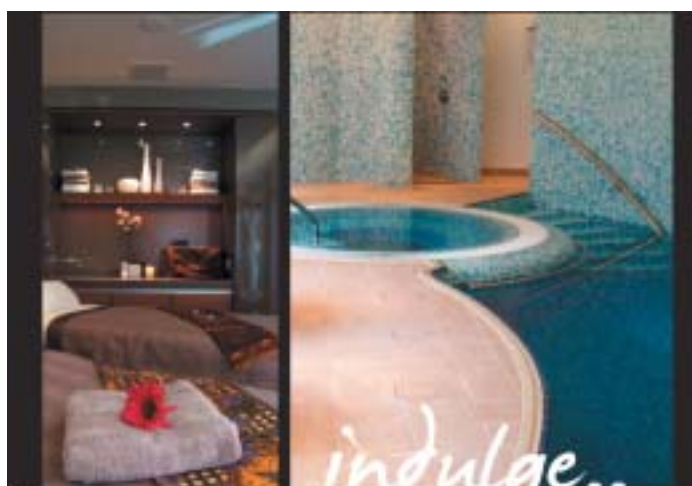
- Improving the promotion of South Hams food and drink events and cultural events
- Developing new markets for food & drink and arts & culture practitioners

Many of the sustainable tourism practices developed in the South Hams have been adopted across the region. The work we are doing in sustainable tourism plays a crucial part in the maintenance of the South Hams' unique character, it also helps to ensure continued prosperity for local tourism businesses.

Anne Rossiter of award-winning Burton Farmhouse near Kingsbridge, said: "We've always followed a country business ethos so we were pleased to be involved...The award of this new funding is great news for us and every green business in the South Hams because it will help us to further develop our sustainable tourism practices."



Anne Rossiter



Take advantage of the wonderful new Health Spa at Dart Marina.  
Open daily to non members from 7.30am to 9.00pm.

Try our new spa facilities for just £5

with this advert including swimming pool, steam room, spa bath and fitness room. Over 18's only.

Ask about our membership offers and latest treatment promotions.

**DART MARINA**  
HEALTH SPA

Sandquay Road, Dartmouth, Devon. Tel: 01803 837182 www.dartmarina.com

**Farm & Cottage HOLIDAYS** **Maximise your holiday letting potential**

Take the burden out of holiday letting with the West Country's leading holiday specialists

For extensive marketing, efficient administration and to maximise bookings, call us for a free owners information pack without obligation. With over 750 of the finest holiday cottages in our collection, we are a local company that provides national appeal!

**holidaycottages.co.uk**  
**01237 479146**

Log Cabins • Luxury Riverside Apartments • Fisherman's Cottages • Barn Conversions



# Investing in Leisure

Tone Leisure took on the management of the district's leisure centres from the 1st of December, and has already embarked upon a scheme of improvements worth around £700,000 to Quayside Leisure Centre in Kingsbridge and South Dartmoor Leisure Centre in Ivybridge.

The redevelopment at Quayside includes a new 35-station gym and cardiac rehabilitation/GP referral centre, with specially zoned areas and equipment for induction and cardiac rehabilitation. The current gym will be extended into the bar area to make room for the zones, and a treatment room and fitness testing room will also be created.

Work on South Dartmoor Leisure Centre has also started to create a 38-station gym in an old activity area, while the existing gym will be turned into an aerobic studio room. The bar area will then be converted into a crèche/ multi purpose area.

The new facilities are on course to open in the New Year.

# Blooming marvellous

**A year of hard graft in the flower beds of the South Hams has been recognised by four awards from South West in Bloom.**

South West in Bloom, the regional Britain in Bloom competition, encourages all sectors of the community from private gardens to large industrial estates, from individuals and small groups of volunteers to local authorities, to work together to improve their localities.

Dartmouth was joint winner of the Ayre Cup (for towns with a population of 2,500-5,499). Stoke Gabriel took a Silver Gilt award in the Mary Mortimer Trophy (population under 1,500). The City of Bath Trophy for landscaping went to Royal Avenue Gardens and Marina in Dartmouth, and the Alf Crouch Memorial Award went to SHDC's Les Barnes, Operations Manager in Dartmouth, for outstanding services to Britain in Bloom.

Congratulations to all the South Hams star performers!



Royal Avenue Gardens, Dartmouth



Specialist in Timber Decking

Balustrading in Stainless Steel, Aluminium and Glass

FREE SURVEY AND ESTIMATES



Tel: 01803 712737

[www.mccombedecking.co.uk](http://www.mccombedecking.co.uk)



## HAVE YOURSELF A VERY WASTE FREE CHRISTMAS!

Christmas can be a very wasteful time of year, but the great news is that most of this waste can be recycled. Saving paper, card and leftover food from landfill helps reduce the effects of climate change by reducing harmful methane gas production in landfill sites.

- Christmas wrapping paper, all cardboard packaging and greetings cards need to be put into your blue recycling sacks
- Recycle any cans and plastic bottles leftover from the festivities by putting them into your clear recycling sacks
- Please help reduce greenhouse emissions by putting all your empty bottles and jars in a bottle bank. Recycling just two glass bottles saves enough energy to boil water for five cups of tea
- There is always lots of food waste produced at Christmas. All your leftover turkey, vegetables, fruit and peelings need to be placed into the brown bin for composting. This helps prevent the harmful greenhouse gas methane from being produced in landfill sites
- For those householders not on the brown bin scheme you could use a wormery or place your peelings into a home compost bin

Compost bins and wormeries make an ideal Christmas gift. Compost bins and wormeries also keep the rubbish bins empty and provide goodness for the garden throughout the year. To buy a council subsidised compost bin please contact West Country Worms by visiting [www.westcountryworms.co.uk](http://www.westcountryworms.co.uk) or by calling 01803 712738.

## Pointers for Perfect Poultry

If you find yourself doing more cooking than usual this Christmas, or are cooking Christmas dinner for the first time it might be useful to brush up on some poultry pointers to ensure you cook well & keep well over the festive season.

Most people are well aware of the need to cook poultry well to avoid the risk of food poisoning. If you take extra measures to ensure your food is prepared and cooked in a safe and hygienic way then you should be well on your way to deliciously worry-free Christmas.

### Top tips for perfect poultry:

1. Defrost frozen poultry completely – preferably in a refrigerator (approx three hours per lb) or in a cool room at less than 15°C. Cook within 24 hours of defrosting
2. Store and defrost raw poultry at the base of your fridge so that juices cannot drip onto other foods
3. Remove the giblets before cooking
4. Do not stuff the bird, cook stuffing separately
5. All utensils and surfaces used for the preparation of poultry must be thoroughly cleaned and disinfected before being used for the preparation of other foods
6. If defrosting or cooking in a microwave, follow manufacturers guidance
7. Cook the bird thoroughly (see table below)
8. When cooked serve straight away or cool within 1½ hours at room temperature, then refrigerate
9. Re-heating is not recommended. If you must re-heat then do so thoroughly, re-cooking is best
10. Avoid handling the cooked meat as far as possible

Weight	Defrosting Time	Cooking Time
2-5lbs	6-15 hours	1-2 hours
5-8lbs	15-18 hours	2 - 2½ hours
8-11lbs	18-20 hours	2½ - 3¼ hours
11-15lbs	20-24 hours	3¼ - 3¾ hours
15-20lbs	24-30 hours	3¾ - 4¼ hours
20-25lbs	30-36 hours	4¼ - 4¾ hours
25-30lbs	36-48 hours	4¾ - 5½ hours

## WIN! WIN! WIN!

As you know, we are very keen on recycling. And when we came across some fabulous Christmas tree decorations, made from old circuit boards, we just couldn't resist giving you the chance to win some for your tree this year.

Each set has one tree, one star and one bell shaped decoration and we have 10 of these fabulous sets to give away.

All you have to do is send us your top home recycling tip, our favourite 10 tips will receive a set of decorations. Send your recycling tip, along with your name and address to 'Xmas competition', South Hams Magazine, Follaton House, Plymouth Road, Totnes, TQ9 5NE or email it to [public.relations@southhams.gov.uk](mailto:public.relations@southhams.gov.uk) by no later than 13th December to be in with a chance of winning.



# Play the name game!

Midas Homes and South Hams District Council are inviting you to enter a competition to come up with a marketing name for its new development in Totnes.

South Hams District Council has selected Midas Homes as the development partner for the redevelopment of Totnes Southern Area Phase 2 - a scheme that will create high quality new homes for the Totnes community.

The development has been designed by Totnes architects Harrison Sutton Partnership and has already won a national housing design award even though it isn't yet built! Midas Homes will work with South Hams District Council and Sovereign Housing to create the 52 new one, two, three and four bedroom homes. The properties will comprise a mix of apartments, houses, coach houses and townhouses. In response to local housing needs around half will be affordable. The company will also provide three commercial units for South Hams District Council.

If your entry is selected, you could win £50 of high street vouchers ready to spend in the January sales! The deadline for entries will be December 18th and the winner will be notified by 5th January 2007. Please send your entries, marked 'Midas Competition', to: Public Relations, South Hams District Council, Follaton House, Plymouth Road, Totnes, TQ9 5NE.

## Help keep your Christmas tree Green

Once Sixth Night comes and it's time to take the decorations down, don't forget that real Christmas trees can be recycled and composted as well as your paper and cardboard packaging. You can either put Christmas Trees in your brown wheeled bin for organic waste (you may have to cut them down to fit) or you can take them to your local recycling centre. This reduces the harmful greenhouse gas methane and helps to reduce climate change.

South Hams Recycling Centres:  
 TORR QUARRY – KINGSBRIDGE  
 BRIDGE COURT - IVYBRIDGE  
 BABBAGE ROAD INDUSTRIAL ESTATE - TOTNES

Open all year round (except Christmas Day, Boxing Day and New Year's Day)

	Summer (Apr - Sep)	Winter (Oct - Mar)
Monday - Friday	8:00am - 6:00pm	8:00am - 4:30pm
Saturday and Sunday	10:00am - 6:00pm	10:00am - 4:30pm

*Toad Hall Cottages*  
 The local holiday cottage agency  
 with a National reputation for excellence  
 Telephone: 01548 853089  
[www.toadhallcottages.com](http://www.toadhallcottages.com)

Unforgettable, affordable holidays in paradise  
 Telephone: 01548 852407  
[www.toadhallcaribbean.com](http://www.toadhallcaribbean.com)  
*Toad Hall Caribbean*

**FREE BOTTLE OF HOUSE WINE AT THE WHITE HART**  
 SUBJECT TO TERMS AND CONDITIONS BELOW

THE WHITE HART MENU FEATURES A DAILY CHANGING CHOICE OF DISHES USING FRESH LOCAL PRODUCE. OUR DISHES ARE INSPIRED BY MEDITERRANEAN COOKING STYLES AND TASTES TO CREATE MODERN BRITISH FOOD.  
 CALL: 01548 831 561 OR EMAIL: [info@whitehart-inn.co.uk](mailto:info@whitehart-inn.co.uk)

**WHITE HART**  
 INN & RESTAURANT  
 MODBURY

On presentation of the advert, no cash accepted. Only one voucher accepted per table group. Valid only on purchase of meals from the lunch or dinner menu. Subject to availability and at manager's discretion. Not to be used in conjunction with any other offer or promotion. Valid 7 January - 6 February 2007 only.



## Keep warm & keep well this winter

As the temperature drops our chances of falling ill increase and older people are particularly at risk. It is estimated that over 20,000 older people in Britain will die because of the cold this winter – that's eight pensioners per hour! There are a number of things you can do to keep you and your home warmer this winter. Please follow these top tips to make sure you keep safe and warm over the next few months:

### Dress appropriately

- Wear thin layers of clothes rather than one thick layer
- Choose clothes made with wool, cotton, or fleecy synthetic materials

### Stay active

- Don't stay sitting still for long periods
- Spread chores through the day and alternate between rest and activity
- Exercise without taking risks in wet or icy weather
- Get a flu jab

### Eat well

- Eat at least one hot meal a day
- Sip hot drinks regularly through the day and before bedtime
- Keep a flask of hot drink by your bed should you wake up feeling cold

### Prepare your home

- Stock up on provisions in case it is too cold to go shopping
- Seal gaps around windows and doors
- Insulate the loft to reduce heat loss
- Check your heating system is working properly and is serviced once a year

If you are using an electric blanket, make sure you have it checked by a safety expert at least every three years. Age Concern is offering free electric blanket testing in selected areas across the UK (their contact details are below).

### Financial support

Age Concern offers a free 'help with heating' factsheet that will tell you about:

Reducing heating expenses  
Warm Front Grants  
Cold Weather Payments  
Winter Fuel Payments

- **Age Concern Information line: 0800 00 99 66**  
Free phone 7 days a week from 8am to 7pm.
- **Winter Warmth Advice Line: 0800 085 7000**  
Department of Health 8am to 8pm Monday to Friday.
- **Keep warm, keep well: Winter guide** is online at [www.dh.gov.uk](http://www.dh.gov.uk)

## Is your search as safe as houses?

So, you've found your dream home. You've instructed your conveyancer and you want to move in yesterday. With so much to sort out, it's no wonder you don't give much thought to what property searches are ordered. After all, there is indemnity insurance in case something goes wrong, isn't there?

But, have you thought about the implications for you and your new home if the worst happens and you do get an unpleasant surprise because you didn't order the right searches?

What would happen if after you move in you find out you can't extend your house because it's in a conservation area or that a public right of way crosses your garden? Would indemnity insurance make you feel any better if these things really did happen to you?

Moving home doesn't have to be this uncertain. If you ask your solicitor to complete a full council search, you are guaranteed to receive all information about the house you want to buy.

What's more, a council search is backed by a FULL guarantee. And because South Hams District Council is joined-up to a national electronic search service called NLIS, your solicitor can even request and receive your searches electronically, within a matter of days. You have a choice about what search you receive when you move home. Make sure you use it. Ask your solicitor for a full council search delivered through NLIS.

## Save pounds and the planet

Winter is with us and with the heating on for the foreseeable future many of us are wondering how much our fuel bill will be this year.

To reduce your fuel bills and make your home more comfortable it is worth considering:

- Having cavity wall insulation installed (costs from around £250 with a grant)
- Ensuring your loft is insulated to the recommended depth of 10-12 inches
- Having thermostatic radiator valves fitted and putting foil behind your radiators
- Having your boiler serviced and using your programmer effectively.

There are grants and discounted schemes available to help all homeowners have the above measures installed and for those who receive some form of benefit e.g. Council Tax Benefit or Disability Living Allowance the measures may be free.

To find out how to save energy in your home and what grants and schemes you might be eligible for please contact the Devon Energy Efficiency Advice Centre on 0800 512012 for free and impartial advice.

With fuel prices constantly rising it could also be worth checking that you are getting the best price for your gas and electricity by contacting SimplySwitch on 0800 011 1395.

South Hams District Council is also trying to keep its fuel bills down by using energy efficient equipment and by reminding Council employees not to leave lights and computers on unnecessarily.



**Your one-stop Christmas shop!**

- Open 7 days a week, including Wednesday late nights, up until Christmas
- Biggest Christmas decoration & gift displays.
- Masses of free parking.
- Convenient out of town relaxed shopping.
- Christmas menu available.



OTTER NURSERIES

**Christmas Giving**  
*The Magic of Christmas!*

OTTER NURSERIES GARDEN CENTRE  
Chittleburn Hill, Brixton, Plymouth, Devon PL8 2BH.  
Tel: 01752 405 422.

RESTING EATING STUDYING PLAYING WORKING SLEEPING READING VIEWING COOKING GARDENING DREAMING

# SPACE



**A world of fine dining... but at pub prices**



Award winning, fabulous food has sailed into Yealmpton at the beautifully refurbished Rose & Crown. You can enjoy informal bar meals or indulge in the splendid experience of our Pacific Rim inspired restaurant.



- Friendly, traditional inn
- Fantastic wine list
- Walled garden
- Real ales & guest ales

www.theroseandcrown.co.uk  
Rose & Crown 01752 880223



... and

Just across the terrace you'll find our (also award winning) Seafood Restaurant serving absolutely inspired gourmet dishes prepared from the most freshly landed Atlantic fish and seafood.

*Free bottle of house wine at the Rose and Crown*

subject to terms and conditions below

*2-COURSE SET LUNCH 9.95*

Opening Times: Tues - Sat  
12.00 - 2.00 Lunch  
6.30 - 9.30 Dinner  
Sunday Lunch 12 - 2.30

Seafood Restaurant 01752 880502

**write to** Living Space Architects  
6 The Crescent Plymouth Devon PL1 3AB

**telephone** 01752 664 888  
**e.mail** studio@livingspacearchitects.com  
**visit** www.livingspacearchitects.com



A member of the Royal Institute of British Architects

On presentation of the advert - no copies accepted. Only one voucher accepted per table group. Valid only on purchase of meals from the lunch or dinner menu. Subject to availability and at managers discretion. Not to be used in conjunction with any other offer or promotion. Valid 7 January-6 February 2007 inclusive



# Follaton House

From rich, historic grounds to modern-day in and outdoor public facilities



The beautiful, historic grounds and house at Follaton, Totnes, are public property and a great deal is open for residents and visitors to see and enjoy.

The main buildings incorporate South Hams District Council HQ but there are also carefully-restored 180-year-old rooms to hire, a beautiful arboretum to walk and discover, lovingly tendered gardens and a wonderful venue for a wedding or civil partnership.

And what more fascinating a place to take an afternoon stroll or tie the knot, than at a settlement that has existed since Norman times at least? Certainly the Domesday Book of 1086 refers to a Breton ally of William the Conqueror, Juhel, Baron of Totnes, who owned the manor of Foletona.

However, the word Follaton was originally used by the Saxons to describe a stud or foal farm, which may even suggest Foletona had been a farm prior to the Norman invasion.

The barony of Follaton changed hands many times after 1086 and in 1306, owner William la Zouche gave Follaton to the monks of Totnes Priory who kept it until the Dissolution of the Monasteries in 1539.

When the Priory buildings were devastated for all their valuable materials during the ownership of Sir Peter Champernowne of Dartington, the freehold passed to the Smyths - father and son, who were both Mayors of Totnes.

References to Follaton over following centuries are scarce until 1788, when it

was bought by Edward Cary (1736-1822) of an ancient Devon family. The family had owned Cockington Court, Torquay and continued to own Torre Abbey until 1929.

An older wing existing to the south of the building, suggests that the 18th century Follaton House was a modest stone building, described as 'a comfortable dwelling house with a garden and stable'. That was until in the 1820s, Edward Cary's son George Stanley-Cary (1777-1858) decided to commission a new house.

The architect of the current manor house at Follaton was George Stanley Repton (1786-1858). As senior assistant to John Nash, George Repton worked on Blaise Hamlet, Regent's Park, the King's Opera House and the Haymarket Theatre. George Repton later enjoyed solo success and has a series of West Country achievements to his name, including four famous houses: Kitley near Yealmpton, Peamore House in Exeter, Widworthy Court near Honiton and Follaton House, Totnes.

Repton re-built Follaton House in 1826 in an austere neo-classical style, and the four columned Ionic portico is considered remarkable for its simplicity. The gothic revival during the 1820s saw many properties in the county altered, leaving Follaton as one of the last standing examples of neo-classical architecture in Devon.

The Stanley-Cary family line continued at Follaton House until George's

grandson, Francis sold the house in 1918, after it had been used as a hospital during the First World War.

In 1925, the then Totnes Borough Council purchased Follaton House for the water rights.

In 1952 Follaton was made a listed building by the Department of the Environment and it remains a Grade II\* listed property to this day.

Finally in 1965, the house took on its current principal use, as a base for local government, when the then Totnes Rural District Council purchased the property for £25,000.

In 1974, during the reorganisation of local government, Follaton became the central offices for the greater South Hams District Council. South Hams District Council brought staff from its Totnes town centre base up to Follaton and the old house was extended with new office buildings designed to complement the existing building.

Since 1974 restoration work has been completed on the exterior and interior of the house, notably the restoration of the Cary and Repton rooms and the entrance halls. A new council chamber was built in 1985/86 mirroring the neo-classical portico of the main house.

For anyone looking for further information on the many and varied opportunities at Follaton House, including room-hire, weddings, civil partnerships or just a walk in the arboretum, please call 01803 861234.



# DISTINCTIVE KITCHENS

*to enhance your home.*



**B**ased in Crediton, Ashgrove Kitchens have been designing and making beautiful and individual kitchens since 1987. With a wide variety of choice and styles, lovingly crafted and hand built, first-class service only adds to the beauty of having a bespoke kitchen, bedroom or home study.

We would be delighted to arrange a free no-obligation home visit with one of our designers to discuss your particular requirements. For more information, or a copy of our brochure, please give us a call or visit our website. Please quote SH1 when contacting us.



**ASHGROVE**  
KITCHENS LIMITED

**freephone 0800 0683291**  
**www.ashgrovekitchens.co.uk**



Main dealer for NEFF kitchen appliances. *Featured kitchen, Broadoak.*

No.3 Marsh Lane, Lords Meadow,  
Crediton, Devon EX17 1ES





## A Councillor... Who me?



In May 2007, all South Hams District Council seats will be up for election – Can you picture yourself as one of 40 District Councillors championing the needs of local communities?

### A Councillor ... who me?

To be a local Councillor you must be:

- at least 21 and a British, Commonwealth or European Union Citizen
- on the electoral roll for the area or have worked or occupied as owner or tenant any land or premises in the district for at least a year

### Why would I want to be a Councillor?

People stand for election for many reasons:

- To speak on behalf of the local community and help local people
- To pursue their political beliefs
- To contribute business or professional skills
- To shape the future of the local community

Councillors play a vital role in shaping and directing the effectiveness of local services for the benefit of local people. They work with the Police, Health and other Public Bodies and the private sector in order to achieve these aims.

The position of the Councillor is vital in the local community as the voice of the community and the champion of the users of local services.

*The Councillor therefore plays a vital role in the overall effectiveness of local government.*

All South Hams District Council seats are up for election in May 2007, and this offers you the perfect opportunity to stand as a representative of your local community. The election process begins in March with the publication of the notice of Election, after which you may formally submit nomination papers.

### What's involved in being a Councillor?

The role of a Councillor can be varied at the best of times. Perhaps the three main areas of responsibility are:

- Representing the people in your area
- Community leadership
- Formulating policy and working within budgets

### If I am elected

... *what would my time commitment be?*

- It will depend on the extent of your involvement, your political activities, and what role you take in the Council
- The average amount of time spent on Council business is 15–20 hours per week although only a relatively small proportion of this is spent at Follaton House in meetings
- You are likely to be required to deal with constituents' queries at home

... *can I afford it?*

- The Council operates an allowance scheme for Members. Councillors receive a basic allowance, travelling allowances and there is also a carers' allowance scheme
- Those with special responsibilities, such as Executive members, receive additional allowances

... *can I get time off work?*

- Most employers are prepared, within reason, to grant some time off for Council work. You should discuss this with your employer before making the commitment

... *will it affect any benefits that I receive?*

- The situation regarding benefits can be complicated so you are advised to seek the guidance of SHDC's Benefits Section on 01803 861234

... *do I have to be a member of a political group?*

- Councillors need not be identified with a political group

... *where and when do meetings take place?*

- Almost all meetings of the Council take place at the Council offices at Follaton House, in the Council Chamber or one of the other meeting rooms. Meetings can take place at various times but most begin at either 10am or 2pm

... *what initial help will be given?*

- An induction programme on the Council's services and its priorities, aims and challenges is being prepared
- You will also be provided with a manual which includes the basics about the Council and your role as a Councillor

... *will I receive any form of training?*

- Soon after election, each Councillor will be asked to identify his/her training needs against a core set of competencies. Personal development plans will then be produced and training will be targeted to meet any skills gaps identified
- Councillors may also be asked to attend various conferences and seminars on specific topics

... *Will I receive any other support?*

- SHDC staff are committed to assist you to fulfil your duties. The Member Support Services team provides a support service. Each new Councillor will also be given a buddy to help with those first few difficult months

... *What other involvement is there?*

- SHDC works in partnership with many organisations which provide services to the community. Councillors are appointed to represent the Council on many of these bodies

### Still interested and want to know more...

- About being a Councillor? Come to our information evening in the Council Chamber at Follaton House, Totnes. (Date to be confirmed)
- About the political groups? Details of local political parties can be found online at: [www.southhams.gov.uk](http://www.southhams.gov.uk)
- About the election process? Please contact SHDC's Electoral Administrator on 01803 861129



## New Harbour Board for Salcombe



The new Salcombe Harbour Board. Front Row l-r Cllr Shonaugh Rankin, Cllr Jeff Beer (Chairman). Back row l-r: Mike O'Brien, Hugh Marriage, Jono Barrett, Cllr John Carter, Dr Kit Harling, Tim Bass, Cllr Julian Brazil, Rufus Gilbert.

South Hams District Council has concluded its review of Harbour Board governance in Salcombe and has appointed a new Harbour Board.

The new Harbour Board, which will report to SHDC's Full Council, consists of four district councillors and four co-opted members. Board members were selected by interview and through assessment of each applicant's skills, knowledge, experience and commitment.

To ensure that the Harbour Board has strong and direct links with harbour users, local communities and other external organisations with an interest in the Salcombe - Kingsbridge Estuary, a formal consultation mechanism has been set up. Three not-for-profit community groups have registered their interest to work with the council in relation to its future Harbour activities and are recognised as 'Harbour Community Forums' and form part of a formal consultation mechanism for the Harbour Board. These groups are:

- The Salcombe Kingsbridge Estuary Association
- The Salcombe Kingsbridge Estuary Conservation Forum
- The Kingsbridge Estuary Boat Club

Cllr Jeff Beer, Chairman of the Harbour Board said "I'm very excited about the new Harbour Board. Their range of abilities will benefit everybody in the Salcombe Harbour & Kingsbridge Estuary; users, residents and visitors alike, it's an exciting time!"

## Safety drive to save lives!



Almost 1,000 South Hams children have been taught to save themselves from dangerous situations thanks to SHDC's Life Skills events.

During October, every 10-year-old in the South Hams was invited to attend a half-day safety awareness session organised by SHDC's Environmental Health Team and Devon and Cornwall Police Crime Reduction Team. Sessions were run from all four of SHDC leisure centres.

The awareness sessions covered everything from chip pan fires and personal safety to water safety and drug awareness.

Cllr Shonaugh Rankin is SHDC's Champion for Children and Young People, she said, "SHDC takes the safety of children in our area very seriously. By arranging the Junior Life Skills events we can help to provide the district's 10 year olds with essential skills to deal with a wide range of issues regarding their personal safety and the safety of their communities."

# Street Scene Team

In answer to concerns raised by the public on littering and dog fouling in last year's general satisfaction survey, SHDC has launched a Street Scene team.

The team is walking the streets of the South Hams offering advice and information to locals and visitors on all range of matters, including proper waste disposal and car parking.

They also have the authority to give warning to anyone at risk of acting illegally. And if necessary they can take enforcement action in respect of

environmental crimes, such as littering, fly tipping, dog fouling, illegal trade, waste, fly posting, graffiti damage to public property and abandoned vehicles.

The enforcement action can be anything from an official warning to seizure of vehicles concerned in fly tipping, and even prosecutions through the courts.

SHDC's Street Scene Manager, Ian Hosking, who has recently joined the council, said: "Taken individually these environmental crimes may seem minor,

but combined they can ruin the distinct environment of the South Hams. We hope the Street Scene Inspectors will help to deter issues arising in the first place and take responsive action if need be, which should help to keep our beautiful district clean."

The Street Scene Inspectors are contactable direct through any one of the following means: Customers Services Centre, 01803 861234, out of office answer phone, 01803 861262, or e-mail [streetscene@southhams.gov.uk](mailto:streetscene@southhams.gov.uk)

# Annual Report 2005/6

Each year South Hams District Council publishes an Annual Report explaining its financial situation. This is our Annual Report for the financial year ended 31st March 2006.

## Consolidated Balance Sheet

This statement summarises our financial position at the year end and provides an indication of the value of the assets owned by the council.

31 March 2005 £000		31 March 2006 £000
49,590	<b>Fixed Assets and Long Term Debtors</b> Includes land, buildings, roads, vehicles and sea defences	53,104
22,941	<b>Net Current Assets</b> Short term assets such as cash and stocks less liabilities such as creditors and short term borrowing	23,006
(11,000)	<b>Long Term Liabilities (pensions)</b>	(7,500)
<b>61,531</b>	<b>Total Net Assets</b>	<b>68,610</b>
50,709	<b>Capital Finance Reserves</b> A combination of different reserves, most of which are non-useable	54,780
11,053	<b>Useable Capital Receipts</b> Proceeds of the sale of assets which can be used to fund capital expenditure	10,585
10,233	<b>Earmarked Reserves and Fund balances</b> Amounts set aside for future revenue or capital spending	10,024
536	<b>Collection Fund Balance</b> The excess of council tax collected over budget. Available to keep future council tax levels down and is shared between all precepting authorities	721
(11,000)	<b>Pensions Reserve</b>	(7,500)
<b>61,531</b>	<b>Total Reserves and Balances</b>	<b>68,610</b>

## Capital Expenditure

Capital expenditure is spending on assets that have a lasting value e.g. land, buildings or vehicles. It is funded from asset sales, external grants/contributions and reserves. Capital expenditure for the year was approximately £4m. The major items are analysed below.

	£000
Housing	1,141
Waste Management	1,107
Computer hardware and software	327
Environmental schemes	311
Totnes Southern Area	213
Industrial Units	210
Purchase of vehicles	206
Leisure facilities	154
Coast and flood protection	119
Community development	97
Other schemes	156
<b>Total</b>	<b>4,041</b>

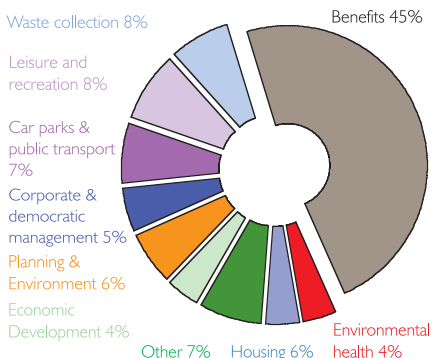


## Revenue Account

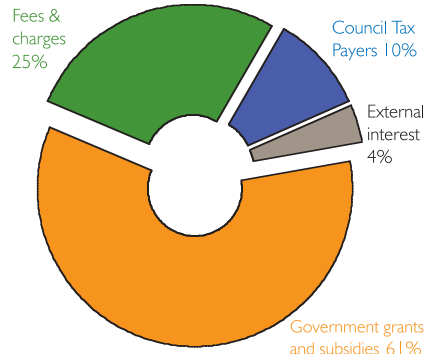
Revenue expenditure represents the ongoing costs of carrying out day-to-day operations and is financed from council tax, fees and charges, government grants and interest earned from investments.

The Council set a budget of £8.86m for the 2005/06 financial year. The actual amount spent was approximately £8.64m, resulting in a surplus of more than £200,000. The receipt of extra grant from Central Government (Local Authority Business Growth Incentive Scheme), additional income from licensing and reduced expenditure on housing benefits were largely responsible for this outcome.

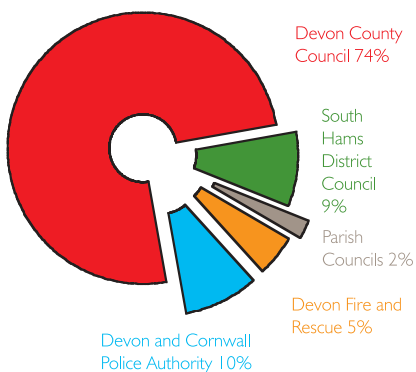
### Where the money was spent



### Where the money came from



### Council Tax



The average council tax bill for a band D property for 2005/6 was £1,255.43 distributed as follows:

	£
Devon County Council	931.86
Devon and Cornwall Police Authority	119.62
South Hams District Council	114.85
Devon Fire and Rescue	58.35
Parish Council (average)	30.75
	<u>1255.43</u>

	Pence per week
Leisure & Recreation inc. Tourism	50
Corporate & Democratic Management	34
Waste Collection inc. Recycling	33
Environmental Health	28
Planning & Environment	24
Housing	18
Street & Beach Cleaning	14
Council Tax Collection	9
Benefit Payments	8
Economic Development	6

The full Statement of Accounts can be accessed via the council's website ([www.southhams.gov.uk/ksp-council-finance-htm](http://www.southhams.gov.uk/ksp-council-finance-htm)). To obtain a hard copy please contact John Foxworthy, Head of Financial Services at SHDC or email [john.foxworthy@southhams.gov.uk](mailto:john.foxworthy@southhams.gov.uk)

We welcome your views on the format of this Annual Report. If you have any comments or suggestions please contact John Foxworthy as above.

## Funding available for community projects

Round 5 of SHDC's Community Grant Fund has recently opened and local community groups have until the 27th January 2007 to put in a bid for funding.

Over £45,000 is available to support local projects that meet a council priority, such as maintaining a distinct and clean environment, supporting the local economy and improving access to services.

The Fund provides up to 50% match funding towards projects that demonstrate community support. The types of groups eligible to apply include Town and Parish Councils, village hall committees, local community groups and voluntary sector organisations.

Recent projects that have successfully secured funding through the Fund include a new South Hams Shopmobility service that will help people with mobility problems access services in local town centres and a project to improve disabled access and facilities in Strete Parish Hall.

If you have an idea for a community project that you think may be eligible, please contact the Community Development Team on 01803 861234 or visit the Community pages online at [www.southhams.gov.uk](http://www.southhams.gov.uk)

The deadline for applications to Round 5 of the Community Grant Fund is 4.30pm on Friday 26th January 2007.

In conclusion we are pleased to report that the council provided its wide and varied range of services very much in line with its original spending plans and within budget. The overall finances and financial structures of the council continue to remain sound and look set to meet both the pressures and opportunities of future years.

## Sherford New Community - LATEST NEWS....

In June, SHDC published and submitted to the Secretary of State the Submission Stage document of the Sherford Area Action Plan (AAP). This is the final document we will produce, detailing what we want to see at Sherford.

During the 6 week public consultation period into the 'soundness' of the AAP, joint drop in sessions were held with Plymouth City Council giving members of the public an opportunity to discuss their concerns with Council Officers and to receive help in completing the representation forms. The AAP attracted a significant level of comments, with over 1900 separate organisations, groups and individuals responding.

Standard letters accounted for 90% of all representations received, whilst the remainder were received by other means. The standard letters were sent on behalf of Plympton Community Council Action Group and Plymstock and Plympton City Conservative Councillors and the third standard letter from individuals wishing to represent themselves. Representations can be viewed online at [www.southhams.gov.uk](http://www.southhams.gov.uk) and at Follaton House.

In addition to the responses received to the soundness of the AAP, the Council received one representation from the Plymouth and South West Co-operative Society which proposed an alternative site for the new community at Sherford. The Council was required to consult for a further 6 weeks on this 'alternative site'. SHDC received 1874 responses from separate organisations, groups and individuals, the majority (97%) of which were again received on standard letters from Plympton Community Council, Brixton Parish Council and the Plymouth and South West Co-operative Society.

The next stage of the process is an independent examination of the soundness of the plan by a Government appointed Planning Inspector. He will consider all the representations made and read / hear evidence on key issues during the examination before writing a report which will be binding. If the AAP is found to be sound, it will be adopted, subject to any modifications required by the Inspector.

The Council expects to receive two planning applications for Sherford during autumn 2006. These planning applications will be determined once the AAP has been adopted.

### Next steps

- November - December 06 – Expected submission of planning applications from Red Tree (promoting the site set out in the AAP) and the Plymouth & South West Co-operative Society (promoting their alternative site)
- December 06 / January 07 – Consultation on planning applications
- January 07 – Independent Examination commencing on 23 January 07 for 2 weeks
- April / May 07 – Inspectors binding Report
- May / June 07 – AAP adoption
- Summer 07 – Decision on planning applications
- End of 07 – Potential start on site

### 2007 onwards...

- 2007/08 – Initial infrastructure works commence
- 2009 – First phase of dwellings ready for occupation together with appropriate education, community, employment and leisure facilities provided
- 2009 – 2021 New Community developed, including 5,500 dwellings completed and all facilities provided in step with housing at all stages of the development

This timetable is the best estimate available at this time. To find out more, please visit [www.southhams.gov.uk/sherford](http://www.southhams.gov.uk/sherford)

## Consultation by computer

Consultation finder is a new online facility where residents can find out what policies, strategies and plans are being consulted on by their local council. What's more, this new online facility means that all local council consultations are now in one place.

By visiting the consultation finder at [www.southhams.gov.uk](http://www.southhams.gov.uk) you can view all SHDC's current and proposed consultations as well as consultations led by partner organisations, including Devon County Council, other local councils and Devon Fire and Rescue Service. You can also register to receive notification of consultations on topics that interest you.

The search function allows you to look for consultations on specific subjects, or just put in your postcode to see what is going on locally. The Consultation Finder is very easy to use and provides step by step instructions to help you find what you are looking for.

Make sure you have your say on the topics that affect you – visit [www.southhams.gov.uk](http://www.southhams.gov.uk) and make your voice heard from the comfort of your own home!



## SHARING SERVICES

South Hams and Teignbridge District Councils have taken the next step towards developing a cutting edge approach to delivering local services.

A recent review of public services in both areas revealed opportunities to combine expertise and resources with a view to improving services. At SHDC we are committed to finding new ways to improve the quality of services for the community and this new report identifies further areas in which we can work in partnership with Teignbridge, with the common aim of improving efficiencies and making savings, the benefits of which we will pass on to the community.

To move the project forward, further research has now been commissioned to investigate which services might be most appropriate for joint working. Depending on the outcomes of the business case for each service, joint arrangements with Teignbridge could be in place from September 08.

Initial research from consultants, Cornwell, has suggested that the savings arising from a partnership approach could be substantial, with total savings across SHDC and Teignbridge amounting to approximately £1.2m each year.



## Salcombe profits from Murder Mystery

A visit from a famous fictional character has brought almost £60,000 of business to the district.

In April, Granada TV approached SHDC to help find a location to act as Easterhead Bay – the setting for the first episode of season three of Agatha Christie's Miss Marple to screen on ITV in 2007. After a fact finding visit in May, Salcombe was cast as Easterhead Bay, with Kingsbridge and Aveton Gifford getting supporting roles.

A crew of 85 descended on Salcombe in early September and a star studded cast soon followed – including Greg Wise, Paul Nicholls and Alan Davis, with Geraldine McEwan as the super sleuth herself.

Filming took place over six days across numerous locations in the town. To fit with the story line, South Sands Sailing and the Tides Reach Hotel got makeovers and a sunny Salcombe day became wet and windy, thanks to the special effects team and their rain machine.

Various organisations contributed to the success of the filming; Salcombe Town Council allowed the park and ride to be used as a 'unit base' for the crew and vehicles; our Tourism team worked with local businesses to ensure that there was adequate accommodation; 96 local people were employed as extras; and the bars and restaurants in Salcombe helped the cast and crew relax after a hard day on set.

In just six days of filming, almost £60,000 of business was brought into Salcombe from this project!

SHDC works with South West Screen to coordinate all kinds of filming in the district and to ensure it has a positive effect on the local community.

## STOVER SCHOOL Newton Abbot

Day, Weekly & Full Boarding.  
Girls & Boys 3 to 18 years

'Where Individuals Shine'



Excellent GCSE and A level results



Ask about our "Taster Days"



NEW £1.4m science block and classrooms

**Mixed Nursery and Pre-Prep**  
Aged 3-7. A safe, nurturing and fun environment to learn in.

**Prep School**  
Aged 7-10. Girls and boys taught in single sex classes.

**Senior School**  
Aged 10-18. Girls and boys taught in single sex classes.

- Small class sizes
- Extensive After-school clubs and activities
- Outstanding art, music and sport departments

'If you are looking for small class sizes, excellent results and a stunning school in beautiful, safe surroundings, look no further.'  
*The Good School Guide*

**"Come and see what Stover can offer your child."**

For more information please contact The Registrar.

tel: 01626 354505  
email: mail@stover.co.uk  
www.stover.co.uk



You thought the beautiful South Hams couldn't get any better...

Imaginative menus and extraordinary wines. The warm welcome of a country inn, lunchtime or evening.



*Free bottle of house wine at  
The Dartmoor Union Inn*

subject to terms and conditions below

Reservations 01752 830288

The Dartmoor Union Inn, Fore Street, Holbeton, Devon, PL8 3NE  
Between Yeadington and Holbeton

On presentation of the advert - no copies accepted. Only one voucher accepted per table group. Valid only on purchase of meals from the lunch or dinner menu. Subject to availability and at managers discretion. Not to be used in conjunction with any other offer or promotion. Valid 7 January-6 February 2007 inclusive



## Celebrating success

2006 has proved a prosperous year for local businesses, with many companies collecting awards and accolades in their sector for outstanding achievement.

South Hams success stories in 2006 include:

- The Local Food Company, Modbury – South West Online Retailer of the Year
- Dart Marina, Dartmouth – Finalist in the South West Tourism Excellence Awards
- Buckland Tout Saints Hotel – 2 AA Rosette & AA's highest accolade, the 'inspector's choice/red star award'
- Rose & Crown Inn, Yealmpton – 'Devon Pub of the Year' in the Good Pub Guide
- Venus Company – three 'Taste of the West' gold awards
- Kingsbridge Farmers Market – awarded best Farmers' Market in Devon in the Devon Life food & drink awards
- Sharpham Vineyard – Best English wine from 2005 vintage, one silver and two bronze awards from the International Wine Challenge
- Pennywell Farm – Farm Attraction of the Year 2006

Congratulations to all South Hams businesses that have had a successful 2006 and we wish you all well for continued prosperity in 2007. Don't forget, if you need business advice, support, premises etc, then please contact SHDC on 01803 861234, if we can't help you, we will know someone who can.

# Envision a more efficient future

**Local businesses could reap significant rewards with a scheme to help cut costs, reduce energy bills and win new customers.**



Solar panels can help lower fuel bills

In the past three years, over 250 businesses across the region have saved a staggering £2 million with support from Envision, a not-for-profit organisation which offers practical, no-nonsense advice to companies on energy efficiency, waste minimisation and water reduction.

Envision is a collective of highly skilled and experienced business mentors, all of whom have significant experience in drawing up practical, workable solutions to common business issues. Fiona Ward, the Totnes-based local mentor for South Hams says "There's an army of organisations offering help and guidance to businesses, but a surprising lack of those provide an extra pair of hands and really practical, relevant advice. Envision has a proven track record in saving money and reducing risk for South Hams businesses, which improves the local environment for all of us".

The service is available to eligible companies in Objective One and Two areas of the South West. It is subsidised by several funding partners and can offer extremely cost effective solutions for small and medium sized businesses.

Tideford Organic Foods in Totnes and Riverlink (Dart Pleasure Craft) are both working with Envision to identify cost savings on fuel bills, efficiencies in

resources and to ensure they have good environmental credentials.

Potential benefits which Envision can help businesses to achieve include up to £13,000 pa saved on fuel by switching to low or no carbon bio-fuels, minimized oil pollution risk and reduced waste costs. These ongoing improvements help the business qualify for further environmental awards and related publicity. This is important, as increasingly more customers are looking to buy environmentally friendly products and services. Businesses which improve their environmental profile, and have an "environmentally sustainable" element to their services or products are attracting new customers while their competitors could be missing out.

Mark Hodgson, Business Manager for Envision, said, "With the right guidance and a bit of entrepreneurial spirit, making positive environmental change makes perfect business sense. By factoring energy consumption concerns and resource efficiency into business planning, companies can grow and save money at the same time."

For no-nonsense advice about how Envision can help your business to grow call 0845 456 9350, or email [southdevon@envisionsw.org.uk](mailto:southdevon@envisionsw.org.uk) or visit [www.envisionsw.org.uk](http://www.envisionsw.org.uk)



# Business News

South Hams District Council's Economic Development team has recently launched a newsletter for the local business community.

The South Hams Business Newsletter is free and will provide useful information to local businesses on council activities as well as details of wider economic issues.

Visit [www.southhams.gov.uk](http://www.southhams.gov.uk) to download the current issue of the South Hams Business Newsletter. If you would like to receive a reminder by email before the publication of the next issue please email [economy.europe@southhams.gov.uk](mailto:economy.europe@southhams.gov.uk) and register your interest.



## South Hams CVS

South Hams Council for Voluntary Service (CVS) exists to help local voluntary organisations, community groups and charities to flourish.

CVS provides a signposting service to match potential volunteers with projects that can benefit from their skills and experience.

With a growing database of volunteers looking for volunteering opportunities, the CVS is now looking for projects in which to place volunteers. If you have a project or opportunity which may suit a volunteer please contact Howard Owens by writing to South Hams Volunteer Centre, The Cottage, Follaton House, or by calling 01803 862266.



## WIN a luxury stay for two at St. Elizabeth's

An exclusive boutique hotel, restaurant and bar, St. Elizabeth's House in Plympton St. Maurice pays tribute to the history and influences of both Plympton and Plymouth.

Situated within nine acres of sweeping lawns and landscaped gardens, the hotel offers a standard of luxury that is unrivalled in the Plymouth area. The building has been styled by designer Cathryn Bishop and each of the fifteen deluxe bedrooms have been individually designed with luxury en-suite bathrooms. All rooms feature plasma televisions, handmade bedside lamps, Egyptian cotton sheets, complimentary bathrobes, Molton Brown toiletries and old European oak furniture. In addition, all rooms have both broadband and WiFi facilities.

The restaurant has seating for up to sixty people, is open for breakfast, lunch and dinner daily and offers a late morning Sunday brunch. Head Chef Jean-Paul Kiely has created a menu with a modern French influence.

The bar is set in the centre of the hotel and is welcoming to all. Here you will find a light bites menu and an extensive drinks and wine list. The bar is open to non-residents.

St. Elizabeth's House is perfect for weddings and other special occasions, conferences and meetings. Our Wykeham Room can be laid out in a variety of styles and a designated area of the grounds has been prepared for marquees.

St. Elizabeth's House opens on 2 December 2006. For more information, and to book, please call 01752 344840, or email [enquiries@stelizabeths.co.uk](mailto:enquiries@stelizabeths.co.uk). Alternatively visit [www.stelizabeths.co.uk](http://www.stelizabeths.co.uk)

*To be in with a chance of winning the fantastic prize of dinner, bed & breakfast, and overnight stay for two at St. Elizabeth's simply complete the entry coupon below, answering the questions and send to the competition address by 5 January 2007.*

## St Elizabeth's Competition

What is the name of the Head Chef at St. Elizabeth's?

.....

Which designer styled the refurbishment of St. Elizabeth's?

.....

Name: .....

Address: .....

.....

.....Postcode: .....

Daytime tel: .....Email: .....

Please send to: St. Elizabeth's competition, Manning Publishing Ltd, The Irwin Centre, Scotland Road, Dry Drayton, Cambridge CB23 8AR to arrive no later than the 5 January 2007.

Please tick this box if you do not wish to receive further details from The Wykeham Group

Subject to availability - prize to be taken on or before 6 February on a Sunday - Tuesday night inclusive. Prize includes the following meals: dinner and breakfast for two. Bar drinks not included. Usual promotional competition terms and conditions apply - copy available on request. Employees of Manning Publishing Ltd, South Hams District Council and Wykeham Group are not eligible to enter.

To advertise your products and services in this magazine and reach over 100,000 potential customers

Call Chris on  
01954 212906



# Devon Youth Games 2007

Devon Youth Games – the county's biggest junior sporting event – will be held in West Devon next June.

West Devon Borough Council will be hosting the day-long annual festival of sport which will bring together more than 1,000 young people across local authority areas in the county.

The Games will take place on Saturday June 30 and will be held in Okehampton's Simmons Park. Facilities at Okehampton College, Parklands Leisure Centre, Okehampton Tennis Courts and the Astro turf pitch will also be used for the events.

Sports for the eight to 16 year-olds are expected to include aquathlon (swimming/running), athletics, badminton, cricket, volleyball, hockey, tag rugby, tennis, netball, Street Sports, squash and gymnastics.

West Devon Mayor Cllr Ken Williams has promised to make it a day to remember, he said "Okehampton in an ideal setting for the Games and we're looking forward to welcoming the young sportsmen and women from across the county."

The Games, which were initiated in 1999, are part of a sport development process within Devon and create a wide range of opportunities for young people to participate and compete. The competition has an emphasis on inclusion and participation and is for those who have not had the opportunity to play at county level or above, but have a special ability and enthusiasm for their sport.

In 2006, over 120 youngsters from across the district made up Team South Hams, winning a Silver medal in the overall competition.

Do you want to take part? If you're aged between eight – 16 and live in the South Hams, contact SHDC on 01803 861234 for more information on how you can be part of Team South Hams for the games in 2007.



Above: Yealmptom primary school, silver medalist, mixed tag rugby.



Right: South Hams girls take bronze in the cricket

**THERAPEUTIC AND SPORTS MASSAGE**

**ARE YOU IN PAIN?**

- Do the muscles in your back, neck and shoulders ache?
- Have you had a sprain or strain?
- Would you benefit from increased relaxation, improved circulation and decreased stress and tension throughout your body?

**THEN MASSAGE CAN HELP!**

**DONNA LINCOLN** BSc. R.S.A. specialises in deep muscle treatments to ease chronic back and soft tissue problems

**Discover the benefits of massage**  
Home visits or at my therapy room in Totnes

For further information or to make an appointment ring:  
**01803 849190 or 0771 9456791**

**RGC BUILDING SUPPLIES**

**YOUR LOCAL INDEPENDENT DIY & BUILDER'S MERCHANT**

Committed to bringing lower prices but a high standard of service

**& SHOWROOMS**

**BESPOKE KITCHENS**  
MADE TO MEASURE

**BATHROOMS**  
from well known brands such as... **Roca**

**FREE CAD DESIGNS**

**SOLID REAL WOODEN FLOORING AND QUALITY LAMINATES TO SUIT ANY BUDGET**

Collingwood Road, Townstal Industrial Estate, Dartmouth TQ6 9UY  
TEL: 01803 834622 FAX: 01803 834394  
[www.rgcbuildingsupplies.co.uk](http://www.rgcbuildingsupplies.co.uk)



## Winter Walking

A new winter health walk programme has been launched at Kingsbridge Quayside, Totnes Pavilion and South Dartmoor (Ivybridge) Leisure Centres.

The walks are part of the Active South Hams initiative led by South Hams District Council, encouraging us all to be more physically active in our daily lives.

Walking as a form of exercise provides many benefits to the body and mind, including increased energy, better quality sleep, reduction in stress, better weight management, and reduction in blood pressure and generally keeps our hearts strong.

South Hams District Council's Leisure Officer, Jon Parkinson, said "Walking is the sure safe way to health and fitness. You can start slowly and build up gently and you will very quickly start to feel the difference. Joining a group is also a great chance to meet new people and make friends".

The health walks are being led by trained leaders, last about an hour, and different groups are available for people to walk at their own pace.

For more information on health walks in the South Hams please visit [www.whi.org.uk](http://www.whi.org.uk) or call 01803 861234.

## South Hams Youth Nights

Following the success of special Youth Nights at SHDC's Dartmouth Leisure Centre, similar evenings for South Hams' youngsters have been launched in Ivybridge, Kingsbridge and Totnes.

The South Hams Youth Nights are aimed at anyone between 13 and 19 years old and will run every Friday night from 7.30 to 10pm. Entry is just £2 and will give young people a place to go for the whole evening and take part in a wide range of activities, including basketball, craft evenings, film nights and live music.

The Youth Nights are organised by Devon County Council Youth Services in partnership with SHDC and the South Hams Community Safety Partnership.

Call your local SHDC leisure centre for more information on South Hams Youth Nights in your area:

**Dartmouth Leisure Centre** – 01803 837010

**Quayside Leisure Centre,**

**Kingsbridge** – 01548 857100

**South Dartmoor Leisure Centre,**

**Ivybridge** – 01752 896999

**Totnes Pavilion** – 01803 862992

## Xmas Hamper Giveaway



The Local Food Company, in Modbury, is Taste of the West's online retailer of the year and specialises in selling fresh local food that is ethically sourced and helps keep food miles low.



The Local Food Company has designed a special Christmas Hamper for South Hams Magazine and is going to be giving it away to one lucky reader in time for Christmas. The hamper, worth £50, the hamper contains tasty treats from local producers including Organic Hot Chocolate and Orange Dark Chocolate from The Cocoa Tree at Chillington and homemade chutney and blackcurrant jam from Kitchen Garden at Strete.

To be in with the chance of winning this fantastic hamper just send an email entitled 'hamper competition' containing your name, address and phone number to [public.relations@southhams.gov.uk](mailto:public.relations@southhams.gov.uk) by no later than Wednesday 13th December.

The winner will be drawn at random. By entering you give permission for The Local Food Company to contact you by email with offers. You can unsubscribe at any time and your details will never be passed to anyone else.

**For more from The Local Food Company visit [www.thelocalfoodcompany.co.uk](http://www.thelocalfoodcompany.co.uk)**

The South Hams really is somewhere special to live, work and play. So why not make some time to enjoy one of the many interesting and exciting events taking place around the district this winter...

### DECEMBER

- **5 Late night shopping**, Totnes
- **8 Conservation of the Salcombe-Kingsbridge estuary**. Come and find out about the wide range of conservation work that is ongoing in South Devon's Marine Nature Reserve. A fascinating talk with slides, Christmas stall, raffle and refreshments too. From 7.30pm, the Old School Centre, South Brent, Entry £1.50.
- **8 Christmas Bingo**, Salcombe Rugby Club, from 7.30 pm, in aid of the Salcombe Swimming Pool
- **9 Community tree planting day**, Bowden House, Totnes. Take a tour of the land which is owned and managed by an eco-community, and then help to plant a woodland area for wildlife. From 10 am – 4 pm, entry is free but please contact Trees for Health on 01803 762180 if you would like to attend. Please bring a drink and veggie lunch to share.
- **10 East Portlemouth cliffs and coast circular walk**  
Join Nigel Mortimer (Marine Ecologist) on a circular walk taking in a smidgeon of woodland, a taste of farmed countryside, a bracing dose of open coast and cliffs and even a wee glimpse of estuary views. Meet at the entrance to the National Trust car park at Mill Bay, East Portlemouth 10 am, finish around 12.30 pm. Please wear walking boots and appropriate clothing and bring binoculars if you have them. Adults £3, children £1.
- **12 Late night shopping**, Totnes
- **15-16 Ice Skating Rink**, Kingsbridge Town Square. Prices to be confirmed
- **15 Christmas Carols** at the Salcombe Yacht Club
- **16 Christmas fair and entertainment** at the Ivybridge Farmer's Market.

- **16 Christmas music quiz** at Salcombe Yacht Club, from 7.15pm
- **18 Carols around the Christmas tree**, from 6 pm, Whitestrand Car Park, Salcombe
- **19 Winter solstice decorations**, Sharpham Estate. Come and find out how natural materials are woven into the spirit of Christmas. After a winter amble around the gardens seeking and collecting natural materials, we'll head inside for the warmth of a log burner to create beautiful winter wreaths and mobiles, colourful woven willow decorations and wands. From 10 am – 1 pm, children £4, adults £5. Booking is essential on 01803 732799.
- **19 Late night shopping**, Totnes
- **20 The Alvington Singers perform at The Holy Trinity Church**, Salcombe from 7.30pm

## JANUARY

- **13 Hedge steeping at Sherford.** Come and learn how Devon hedge banks are made and how the hedges are laid and maintained on top. You'll be helping to conserve some traditional landscape features as you practise! For details call 01548 821156.
- **13 Orchard wassail.** Come and celebrate this old tradition in Stoke Gabriel's community orchard, where locals will be reenacting the customs of old Twelfth Night. Enjoy a barbeque supper and apple cake under the stars, then see the wassail queen enact the ceremony of wassailing the old apple trees, to the tunes of morris dancing and singing in the orchard. Warm up in the pub, with storytelling late into the night. From 6pm, meet by the scout hut next to Church Orchard, please bring a torch and wrap up warmly. Adults £2, children £1, families £5.
- **20 An introduction to the Slapton Ley National Nature Reserve.** Enjoy a presentation by a member of the reserve team, introducing the reserve, its habitats and how it is managed for wildlife, followed by a guided walk exploring the habitats. Tea and coffee on arrival. Meet outside Slapton Ley Field Centre Reserve Office, at 10 am, bring packed lunch. Booking is essential on 01548 580685
- **21 The past beneath your feet.** The rugged coast around East Portlemouth has secrets to tell – if only you know how to read the

signs. Archaeologist Robert Waterhouse will guide you through the centuries to discover an Iron Age village, cliff top field systems and an old iron mine, whilst you enjoy spectacular coastal views. Meet at Wayfield Nurseries, East Portlemouth, at 10.30 am, return around 1 pm. Bring packed lunch and a drink, waterproofs and stout boots. The walk is about 2 miles, with some rocky paths. Adults £3, children £1.

## FEBRUARY

- **4 Hedgerow Furniture Making**, Blackawton. Create a unique chair, throne or bench for your garden or conservatory using coppiced hazel branches to an ancient Westcountry recipe. Tickets £30, all materials provided. Call Blackawton Allotment Association on 01803 712611 to book.
- **4 Winter birding on the Dart.** Travelling by 11 person canoe, this trip is a unique way to see and get close to the Dart's feathered winter visitors. Meet at 11.30 am at Longmarsh, Totnes, return around 4 pm. Bring a picnic lunch and binoculars if you have them. £16 per person. To book call 01803 865301.
- **11 Seedy Sunday**, South Devon Seed Swap, Blackawton School Hall 11am – 3.30pm. Swap and donate seeds from 'Heritage' varieties, event includes a bar, café, raffle and speakers. Entry £1, proceeds to Blackawton Allotment Association.
- **17 Ancient woodland walk.** A guided walk hosted by a member of the reserve team through Slapton Wood. Meet at 10 am outside the Slapton Ley Field Centre Reserve Office. Booking is essential on 01548 580685.
- **17 Staverton snowdrop stroll.** Join local historian and botanist Joy Hanson and enjoy the snowdrops that carpet the riverbanks at Staverton. Learn about local history and about the plants along this stretch of the Dart as we stroll. Meet outside Staverton Church at 11 am, returning 1 pm – in time for a drink or lunch at the Sea Trout Inn if you wish. An easy 3 mile walk, suitable for all ages. Adults £3, children £1.
- **20 Willow harvest and sun weaving.** From 11 am – 3pm on the Sharpham Estate, you will learn how to coppice and pollard willow the traditional way, repair willow fences and other seasonal jobs. In the afternoon after a campfire and hot

soup there will be the chance to weave a willow sun shape to welcome back the return of the longer days. Adults £4.50, children £3.50, booking essential.

- **26 Paddle the Dart by moonlight.** Travel the darkened water through late winter to enjoy a pub supper and return under the half moon. From Longmarsh, Totnes, 5 pm till 10 pm. £16 per person, adults only. Booking essential on 01803 865301.

## MARCH

- **8 - 30 Spring walks at Greenway.** Discover the colourful blooms in Greenway's woodland garden. Walks will be held on various days in March at Greenway Gardens near Galmpton. Please call 01803 842382 for further details.

## FARMERS' MARKETS

- Like locally grown veg, but don't have the time or space to grow your own? Then why not visit a South Hams farmers' market – it's a fun way to buy fresh fruit, meat, cheeses, breads plants and much more whilst supporting your local farmers. Every weekend you will find local produce on sale in the South Hams at one the following places:
- **Kingsbridge** – the Quay  
1st Saturday of the month
- **Dartmouth** – the Old Market  
2nd Saturday of the month
- **Ivybridge** – Glanvilles Mill car park  
3rd Saturday of the month
- **Totnes** – the Civic Hall  
Last Saturday of the month
- If you have an event taking place in the South Hams during March, April, May or June '07 that you would like to see listed in the Spring 2007 issue of South Hams magazine then please email details to [public.relations@southhams.gov.uk](mailto:public.relations@southhams.gov.uk) or write to the address on p3 by no later than Monday 15th January 2007.

*Disclaimer: South Hams District Council cannot be held responsible for the events listed above. We recommend you call ahead to check times and details wherever possible. This is a free listing service - events will be included strictly subject to space.*

NOW OPEN  
IN TORQUAY

# the OAK LOFT



Discover the beauty of our hand crafted stylish furniture

The Oak Loft brings the natural beauty of oak furniture and fine furnishings to the South West at an affordable price.

We offer a huge range of beautiful oak dining tables, chairs, dressers, beds and a sumptuous range of leather and fabric sofas, all available in different sizes and styles to suit your home.

**EXCLUSIVE OFFER**  
SAVE 25% ON ALL  
PRODUCTS IN STORE

\* Offer commences 1st Sept 2006, offer not available with any other discounts.

**FREE**  
Delivery

within 100 miles  
of the showrooms



## the OAK LOFT

Torre Station, Newton Road  
Torquay, Devon, TQ2 5DD  
Tel/Fax: 01803 290484

Unit 2a, Darts Business Park  
Topsham, Devon, EX3 0QH  
Tel/Fax: 01392 877321

[www.theoakloft.co.uk](http://www.theoakloft.co.uk)

opening hours:

Mon-Sat 9am-5pm, Sun 10am-4pm

### TORQUAY



### TOPSHAM



*At James Holland we believe in one thing...*

*Your life should be enhanced  
by the home in which you live.*

William Morris said, "Have nothing in your house that you do not know to be useful, or believe to be beautiful." It's a sentiment that we hold dear at James Holland, which is why we specialize in beautifully practical furniture and joinery.

Our completely bespoke service allows us to work with you to help you realize your vision for your home. Our skills and flexibility means we can truly support our clients, no matter how big or small the dream.

INDIVIDUALLY DESIGNED  
AND HAND BUILT  
FURNITURE, KITCHENS  
AND JOINERY

Contact us to explore how James Holland Cabinet Makers can bring our beautifully practical approach to any room in your home.

**James Holland**  
CABINET MAKERS

*Beautifully practical hand-built furniture.  
Built to your needs. Enhancing your home.*

Stidson Rural Industrial Park,  
South Brent, Devon, TQ10 9JT

Tel: 01364 72039

[www.jameshollandinteriors.co.uk](http://www.jameshollandinteriors.co.uk)