

# South Hams

The magazine from South Hams District Council

Issue 3, Spring 2006

## RECYCLE AND REFURNISH

the smart way to help the environment and kit out your home

## COUNCIL PRIORITIES

what matters most to you



South Hams  
District Council



## Experience the most exclusive kitchen and bedroom showroom in the South West



At Bradbury's you will discover the widest range of exclusive kitchen and bedroom furniture in the South West. With over 16 fully fitted exclusive ALNO kitchens on display and 5 Hülsta fitted bedrooms you will be fired with imagination for your own home. Visit us soon and you will be guaranteed a warm welcome and excellent service from our award-winning designers.



  
**BRADBURY'S**  
Kitchen and Bedroom Centre

Open Monday – Saturday, 9am-5pm. Closed Sundays  
Tel: 01392 825940 [www.bradburysltd.co.uk](http://www.bradburysltd.co.uk)  
Bradbury's, Denbury Court, Matford Park, Exeter EX2 8NB  
Also at: Ilsham Road, Torquay Tel: 01803 290555



# South Hams

Issue 3, Spring 2006



## Hello and welcome to spring!

After the particularly cold winter, which saw snow fall in the South Hams well into late February, it is great to see the season changing and becoming a little warmer!

Thanks to everyone who contacted us after receiving the winter magazine, it's great to hear from you and I hope you see some of your suggestions and comments taking shape in the pages that follow.

Inside this issue you will find a special feature on the weird and wonderful goings on in the Salcombe - Kingsbridge Estuary, waste & recycling information for residents who have recently joined the scheme, top tips for a water efficient home & garden as well as news from around the district.

In addition, our newly expanded leisure section will help you to enjoy all the South Hams has to offer this season...all this in a magazine that costs less than 8p per copy to produce and deliver to your door!

Jenny Bishop, Editor

### ■ News

05 Stories making headlines around the South Hams

### ■ House, home and garden

06 Brighten up your bins for spring

07 Noise Action Week

08 Waste and recycling

10 Refurnish - the smart way to kit out your home

### ■ Business

11 Looking for premises in the South Hams?

11 Business training for women

### ■ Feature

12 Salcombe - Kingsbridge Estuary

### ■ Your council

14 Council priorities - what matters most to you

14 Local development

15 Community grants

### ■ Leisure

16 Dogs on beaches

16 Spring in the South Devon Area of Outstanding Natural Beauty

17 Event and activity listings

18 Devon Artsculture

This publication is available in alternative formats, such as large print or a language other than English. Please contact us on 01803 861234 or e-mail [enquiries@southhams.gov.uk](mailto:enquiries@southhams.gov.uk)

## How to contact us:

South Hams District Council, Follaton House, Plymouth Road, Totnes, TQ9 5NE

Office open: 08.30 – 17.00 Monday to Friday

01803 861234

01803 866151

customer.services@southhams.gov.uk

www.southhams.gov.uk

Out of hours emergency number:

01752 776000

Editor in chief: Jenny Bishop

Features Editor: Elaine Hopkins

## Publishing Services

Manning Publishing Ltd, The Irwin Centre, Scotland Road, Dry Drayton, Cambridge CB3 8AR

Tel 01954 212906 Fax: 01954 212105

e. [info@manpublishing.co.uk](mailto:info@manpublishing.co.uk)

[www.manpublishing.co.uk](http://www.manpublishing.co.uk)

## For advertising sales contact

Manning Publishing Ltd

Tel: 01954 212906

This magazine is printed on paper which is:



Wood fibre from sustainable forests



Fully recyclable and biodegradable



Elemental Chlorine Free

All data contained in advertisements being subject to the Advertising Standards Authority guidelines, are accepted by us in good faith at the time of going to press. The opinions and views expressed in South Hams magazine are not necessarily those of South Hams District Council or Manning Publishing Ltd.

ISSN 1749-5172

Reproduction of editorial is strictly prohibited without prior permission from the publisher. All rights reserved copyright © 2006.



AT THE ROSE & CROWN YEALMPTON

Gourmet dishes using locally sourced produce and, in season, fresh fish & seafood, delivered daily.

2-COURSE SET LUNCH £9.95

Opening Times: Tues - Sat  
12.00 - 2.00 Lunch 6.30 - 9.30 Dinner

Seafood Restaurant 01752 880502

YEALMPTON



Be Part of This Success



To arrange your  
Marketing Proposal Meeting

Luscombe Maye

Totnes 01803 869920  
Kingsbridge 01548 857474  
South Brent 01364 646170  
Modbury 01548 830831  
Iybridge 01752 690077

TORQUAY • EXETER • OTTERY ST MARY • TAUNTON • YEovil • DORCHESTER • RYMGATE

Call us today for  
Expert Advice  
& Free Delivery

HOME  
IMPROVEMENTS

Everything For  
Your DIY Needs



Decking - Fencing - Hard & Softwood  
Flooring - Skirting & Architrave  
Sheet Materials - Sawn & Treated Timber  
And Lots More...



Call us today on:  
Torquay: 01803 616999

We Deliver...

See our whole range at:  
[www.paynetimber.co.uk](http://www.paynetimber.co.uk)

Woodland Business Park, Woodlands Rd, Torquay, Devon TQ2 7AT



YOUR LOCAL INDEPENDENT  
DIY & BUILDER'S MERCHANT

Committed to bringing lower prices  
but a high standard of service

& SHOWROOMS

BESPOKE KITCHENS  
MADE TO MEASURE



FREE  
CAD DESIGNS



BATHROOMS

from well known  
brands such as...



SOLID REAL WOODEN FLOORING  
AND QUALITY LAMINATES  
TO SUIT ANY BUDGET

Collingwood Road, Townstal Industrial Estate, Dartmouth TQ6 9JY  
TEL: 01803 834622 FAX: 01803 834394  
[www.rgcbuildingsupplies.co.uk](http://www.rgcbuildingsupplies.co.uk)

# Travel Devonwide with a free bus pass

Residents of the South Hams who are over 60 or disabled qualify for a Devonwide bus pass, allowing free travel on most public bus routes throughout the county of Devon.

As well as saving the pass holder money, the extra passengers will help local bus companies maintain or even improve their current services.

Copies of the Devonwide information booklet, which includes an application form, are available from:

- The Devonwide office (see details below)
- Kingsbridge Town Council, Clerk's Office
- Stagecoach Devon Ltd ticket offices in Paignton, Torquay and Exeter
- First ticket office, Bretonside Bus Station, Plymouth
- Tourist Information Centres in Dartmouth, Totnes and Modbury
- Libraries\*
- Social Service Establishments\*

(\*unable to issue passes on site, but do carry leaflets)

For further information about the Devonwide scheme please visit <http://devonwide.devon.gov.uk> call 01392 383688 (Mon-Fri 9am-5pm) or write to: Devonwide Concessionary Fares, Transport Co-ordination Service, Room 18, Matford Offices, County Hall, Exeter, Devon, EX2 4QW.



## Increase of just 11p per week



Residents in the South Hams pay one of the lowest levels of council tax for district councils in the whole of Devon & Cornwall. In fact, it is the third lowest across the districts in Devon & Cornwall and lower than the national average charged by district councils.

In the budget for 2006/07 we have made £250,000 worth of savings and put even more money aside to fund the provision of affordable housing – our top priority.

This means that the council tax for South Hams District Council will only increase by £5.51 in 2006/07 for an average Band D property, that's a rise of just 11p per week.

The council tax booklet which was delivered across the district in March contains full details of the charges and increases. If you haven't received a copy please call 01803 861234 and we will be happy to post one to you.

## Harberton flood relief

In January work commenced on the second part of the Harberton flood relief scheme, jointly sponsored by the Environment Agency and South Hams District Council.

Harberton has suffered flooding several times since 2000, damaging homes and blocking access to and from the village. Neighbouring village Harbertonford underwent massive flood prevention works in 2003.

South Hams Council has been campaigning for flood defences for Harberton, near Totnes, for over four years. Last year we called for a joined

up effort from all stakeholders in order to get this project off the ground and to secure the £133,000 necessary to get works underway as soon as possible.

SHDC, Harberton Parish Council, The Environment Agency, local residents and Devon County Council have all contributed to the flood defences fund.

The council is very pleased that the work is now well underway and hopes that all those inconvenienced by the work will be understanding and tolerate any short term disturbances in order to achieve long term benefit.

## Green light for Totnes development

In the last issue we told you about the plans for developing the southern area of Totnes and now we are able to confirm that permission for the project has been granted by South Hams planners.

The Totnes Southern Area development is the culmination of years of planning, community consultation and detailed design work which will see 52 new homes for Totnes, with at least 16 of these being affordable housing for local people.

We are now selecting a developer to bring Harrison Sutton's designs to life, and anticipate that work will commence later this year.

The newly approved plans provide much needed affordable housing for local people, car parking for residents and visitors to the town, as well as public open space for the whole community to enjoy.

## COMPETITION



## Brighten up your bins for spring

In this issue we have a fabulous freebie to give away to one lucky South Hams Magazine reader – thanks to Wheelie Bin Art Ltd.

Wheelie Bin Art Ltd produce a wide range of stickers to brighten up your bins, from the functional to the fantastical you are bound to find something there to suit your taste! They can even customise a sticker capturing your favourite garden scene, pet, holiday photo or design.

The stickers are printed on self adhesive vinyl, are waterproof, fade proof and washable. Log on to [www.wheelie-bin-art.co.uk](http://www.wheelie-bin-art.co.uk) to find out more and view their wide range of creative designs.

To win a set of stickers for your bins just complete the following recycling related catch phrase:

Don't let Devon go to...

- a) bed
- b) seed
- c) waste

Email your completed entry to [public.relations@southhams.gov.uk](mailto:public.relations@southhams.gov.uk) or post it to South Hams Magazine, Follaton House, Totnes, TQ9 5NE including your name and address. The winner will be picked at random from all correct entries received before Wednesday 31st May 2006.

# Water ways

Over the past 30 years demand for water has risen by over 50%. Each day we use an average of 35 gallons (159 litres) per person. South West Water is encouraging households in the South West to try and use water more efficiently in their homes and gardens. Not only will water efficiency help to reduce domestic water bills, it will also look after a precious resource and safeguard our beautiful environment for generations to come.

To be more water efficient in your home and garden, why not try these top tips from South West Water?

### IN THE BATHROOM

- **Bathing or showering.** An average bath uses 100 litres of water! Most showers use around half that amount but power showers can use even more than a bath! Why not choose a shower if possible, but if you do use a power shower, make it a quick one!
- **Flushing the loo.** Older toilets can use nine litres or more per flush but new toilets use just six litres. Call the helpline below for a free water saving HIPPO bag or Save-a-Flush (formerly the Hog) to fit in your cistern.
- **Running the tap.** You can save water by putting a plug in the basin when washing, or using a mug of water when cleaning teeth. Never leave taps running. If you do run the tap, turn it down to a trickle, it works just as well but uses far less water!

### IN THE KITCHEN

- **At the sink.** Try using a bowl to wash vegetables or to wash and rinse dishes and save water. Never leave taps running. If you do run the tap, try turning it down to a trickle.
- **Putting the kettle on.** Only fill the kettle with as much water as you need, or alternatively, use a low energy kettle to make that cuppa!
- **Using the dishwasher.** New dishwashers use as little as 15 litres per wash cycle compared to 50 litres for older models! Only using your dishwasher when you have a full load is water and energy efficient.

- **Using the washing machine.** New models use as little as 40 litres per wash cycle, whereas older models can use up to 100 litres! Only use your machine when you have a full load or choose a short economy cycle. These use less water and less energy too!

### IN THE GARDEN

- **Watering the plants and washing the car.** If using a hosepipe, don't leave it running and fit a trigger nozzle if possible. Using a bucket and sponge for car washing, and a watering can for garden watering will save water. Using a sprinkler wastes water and can do more harm than good! Only water hanging baskets, seedlings and planters – an established lawn will look after itself with regular cutting (set the blades high during dry weather). A sprinkler uses around 1,000 litres of water an hour – enough for a family of six for a whole day!
- **Composting.** Mulching reduces the amount of water plants require by avoiding evaporation. You can either buy mulch or save kitchen waste in a composter. Call the helpline below for advice.
- **Using a water butt.** You can use rainwater to keep your garden plants green by collecting it in a water butt. Plants prefer rainwater and it could save you a walk to the kitchen tap! For advice about water butts contact the helpline.

For information or advice on being more water efficient, or to find out more about water saving devices visit South West Water online at [www.swwater.co.uk](http://www.swwater.co.uk) or call the conservation helpline on 0800 378937.

# Bothered by Noise?

May 22 - 28 is Noise Action week. Co-ordinated by the National Society for Clean Air and supported by the Environmental Health team at SHDC, its aim is to promote awareness of noise and to encourage cooperation and consideration between neighbours.

Nearly a third of people in the UK are annoyed by neighbour noise (MORI) and every year local councils receive a large number of complaints from local residents regarding noise.

If you are bothered by noise from your neighbours, pubs, factories, shops or construction sites we may be able to help. SHDC considers that residents in the district can reasonably expect:

- to be protected from significant loss of amenity due to noise and vibration
- to have qualified professional staff available where necessary to assess nuisance
- not to hear someone else's excessive noise in their home on a regular basis, eg. music, barking dogs, alarms, DIY

Whilst our powers are wide ranging they do not extend to noise from traffic, aircraft (other than model aircraft) or rowdy behaviour in the streets.

Roughly half of noise makers claim to be unaware they are making a noise that is causing disturbance, so if you have a complaint about noise we suggest you speak to your neighbour first, where possible. If you feel this is not appropriate, you can make a complaint about noise in a number of different ways:

- ☎ By calling 01803 861234
- ✉ Emailing [customer.services@southhams.gov.uk](mailto:customer.services@southhams.gov.uk)  
Online at [www.southhams.gov.uk](http://www.southhams.gov.uk)
- ✉ In person or writing to South Hams District Council, Follaton House, Plymouth Road, Totnes, TQ9 5NE
- ☺ Through a third party, such as your local district councillor.

To help us investigate noise complaints we will ask for the following details:

- The name and address of the complainant
- Type, frequency and duration of the noise
- The name & address of the person/premises/vehicle making the noise
- Information on any action the complainant has already taken.

**The complainant's anonymity will always be respected by council staff.**

**During Noise Action Week, SHDC is encouraging all residents to take a quiet moment to consider noises they make and the noises that affect them - and what they can do to reduce the impact.**

## STOVER SCHOOL Newton Abbot

Day, Weekly & Full Boarding.  
Girls & Boys 3 to 18 years

'Where Individuals Shine'



Excellent GCSE  
and A level  
results



Ask about our "Taster Days"



NEW £1.4m  
science block  
and classrooms

Mixed Nursery and Pre-Prep  
Aged 3-7. A safe, nurturing and  
fun environment to learn in.

Prep School  
Aged 7-10. Girls and boys  
taught in single sex classes.

Senior School  
Aged 10-18. Girls and boys  
taught in single sex classes.

- Small class sizes
- Extensive After-school  
clubs and activities
- Outstanding art, music and  
sport departments

### Open Afternoon

Wednesday 8th March  
2pm - 4pm

**"Come and see what  
Stover can offer your  
child."**

For more information please  
contact The Registrar.

tel: 01626 354505  
email: [mail@stover.co.uk](mailto:mail@stover.co.uk)  
[www.stover.co.uk](http://www.stover.co.uk)



Opening May 2006



WILDFIRE

BISTRO

A new informal rendezvous where you can relax and enjoy  
'Slow food - fast'. It's own terrace, fantastic river views, living flame  
fires, jumbrellas with halogen burners makes it an all year favourite  
- and the food is extraordinary tasty.

## DART MARINA

Sandquay Road, Dartmouth, Devon TQ6 9PH.  
Tel: 01803 832580 [www.dartmarina.com](http://www.dartmarina.com)

## Recycling collection scheme

The implementation of phase 5 of the new waste collection scheme was completed recently. This has introduced another 5,500 properties onto the recycling collection.

The remaining properties in the district will all be provided with the recycling sacks scheme by the end of 2006.

Packs of recycling sacks are delivered to householders annually, but people can obtain further supplies when needed by contacting the Recycling Helpline on 01803 861199.

The past year has also seen the 'rollout' of the wheeled bins and new organic waste collections. This has been very successful and has seen the district move closer to the recycling targets set.

Thank you to all those householders who are successfully recycling and composting their waste responsibly, it really has made a difference.

As a reminder of what we can recycle, please see the list of 'What goes where' below:

WHAT GOES WHERE?				
	Brown bin & kitchen caddy	Blue sack	Clear sack	Grey bin
✓ YES please	<p><b>Kitchen/food waste</b> All raw and cooked food waste including: meat, fish, egg shells, vegetable peelings, paper kitchen towels, bread etc.</p> <p><b>Garden waste</b> Grass cuttings, hedge clippings, weeds, leaves and small branches, straw.</p> <p><b>Brown cardboard</b> Large pieces of brown cardboard or excess cardboard, that may not fit into the recycling sacks.</p> <p><i>Please keep your caddy in the kitchen and then empty the contents into your brown bin.</i></p>	<p><b>Paper and cardboard</b> Newspapers and magazines, envelopes (including windowed), catalogues, telephone, directories/Yellow Pages, wrapping paper, junk mail, toilet roll tubes, cardboard packaging (e.g. cereal, frozen food and washing powder boxes), corrugated cardboard, greetings cards printing/writing/shredded paper.</p>	<p><b>Plastic bottles and cans/tins</b> Plastic bottles only (no lids) e.g. fizzy drink, shampoo bottles and washing-up liquid bottles.</p> <p><b>Mixed food/drink tins and cans</b></p> <p><b>Clean aluminium foil</b></p> <p><b>Empty aerosol cans</b></p> <p><i>Please rinse all plastic bottles and tins/cans and squash where possible.</i></p>	<p><b>Material that cannot be recycled or composted</b> (this material will be buried in landfill) e.g. disposable nappies, cold ashes, polystyrene, plastic lined containers or cartons, plastic bags, plastic films and wrappings, crisp packets, glass bottles/jars*, wallpaper and tissues.</p> <p><i>*Glass can only be recycled at your local recycling bank.</i></p>
✗ NO thank you	<p><b>No plastics</b> (all types) Plastic cannot be composted</p> <p><b>No soil/stones/rubble</b></p> <p><b>No large branches</b> (over 4 inches thick)</p> <p><b>No other rubbish</b> ANYTHING made from plastic, glass or metal. No dog or cat faeces. No cartons or plastic lined containers.</p> <p><b>No textiles</b> e.g. clothing</p>	<p><b>No wet or dirty paper</b></p> <p><b>No wallpaper</b></p> <p><b>No Cardboard cartons</b> e.g. Tetrapack, juice, milk or soup cartons</p>	<p><b>No other plastics</b> e.g. food trays, polystyrene, crisp packets, plastics wrapping, carrier bags, lids from plastics bottles, yoghurt pots, flower pots.</p> <p><b>No other metal objects</b> e.g. paint tins.</p> <p><b>NO GLASS BOTTLES/JARS</b></p>	<p><b>Please DO NOT put any items that should be in the brown bin or recycling sacks into this container.</b></p>

Don't let Devon go to waste



## Recycling Centres

Do you have items you no longer want, things cluttering up the garage that you want to throw away like old bikes, wood, and white goods? Devon County Council provides three full time recycling centres throughout the South Hams to accept these sorts of items from householders.

The recycling centres have all been refurbished and redesigned in the last few years. This has enabled a greater amount of material to be recycled and for more of your items such as your old bike to find new homes!



The centres accept materials from domestic properties for recycling such as:

- Recyclable materials
- Bulky household items  
*e.g. Furniture, carpets, household electrical equipment, fridges/freezers*
- Garden/green waste
- Timber
- Metal/domestic appliances
- DIY engine oil
- Car batteries
- Reusable goods

The recycling centres located at Ivybridge, Torr Quarry and Totnes are open to residents on the following dates and times:

	Summer (Apr - Sep)	Winter (Oct - Mar)
<b>Monday - Friday</b>	8.00am - 6.00pm	8.00am - 4.30pm
<b>Saturday and Sunday</b>	10.00am - 6.00pm	10.00am - 4.30pm

For further information, directions or advice please contact Devon County Council on 01392 382846 or visit [www.recycledevon.org](http://www.recycledevon.org)

## Tally Ho! Coaches



Local Family Company

Proud to have served the people of the South Hams since 1926

Local Bus Services and Quality Coach Hire

01548 853081 [www.tallyhocoches.com](http://www.tallyhocoches.com)

## QUALITY BLINDS

3 ONLY FOR **£145** INC VAT  
 Width up to 178cm  
 Drop up to 127cm from a selected range

Promotion not valid in connection with any other offer

Discount for Senior Citizens

Up to 55% off selected blinds

Extensive RANGE

10% off venetians

NEVER BEATEN ON PRICE

• MEASURED FREE • FITTED FREE • 5 YEAR GUARANTEE • FAST LOCAL SERVICE • 23 YEARS MANUFACTURING EXPERIENCE

TEL: 01752 300923 ANYTIME

UKBlindsdirect

[www.ukblindsdirect-plymouth.co.uk](http://www.ukblindsdirect-plymouth.co.uk)

**Sirena Environmental Ltd**

Save Money, Save Energy, Save the Environment

Sirena Environmental can help you with environmentally friendly energy solutions for your home and business:

- Solar Hot Water Systems
- Solar Swimming Pool Heating
- Ground & Air Source Heat Pumps
- Solar Electric Photovoltaic Panels
- Wind power systems

Tel: 01548 898248  
 e-mail: [info@devonsolar.co.uk](mailto:info@devonsolar.co.uk)  
[www.devonsolar.co.uk](http://www.devonsolar.co.uk)

Member of the Solar Trade Association

**Coast & Country Cottages**

Over 300 holiday properties in & around Salcombe, Dartmouth and throughout the beautiful South Hams Coast & countryside. Thinking of letting your holiday home? This Brochure & Details Guide is for you!

Contact our local teams in Salcombe 01548 843773, Dartmouth 01803 839499, Kingsbridge (Hops Cove & South Hams villages) 01548 852571 [www.coastandcountry.co.uk](http://www.coastandcountry.co.uk)

## take the hassle out of organising

- Your Children's Birthday Parties
- Adults' Birthday, Anniversary & Wedding Celebrations
- Corporate Events: Golf Days & Corporate Parties
- Weekends away for you & your family
- Buying Special Gifts • Estate Agents and Movers

When you need that occasional help, let me take the hassle out of your life.

make your life... **Hassle free**

personal planning • event organisation

Mobile: 07970 451727  
 Tel: 01392 433372  
 Email: [marie@hasslefreelife.net](mailto:marie@hasslefreelife.net)  
 Web: [www.hasslefreelife.net](http://www.hasslefreelife.net)

## The Holistic Health Practice Ltd

### How do you value your health?

We only have one body and often only one chance for health.

Here are some of the services we are able to offer you:

- Food Sensitivity and Chemical Intolerance Testing
- Kinesiology and wellness assessment
- Bioenergetics for the future
- Coaching with NLP (Neuro linguistics)
- Colonic Hydrotherapy

Tel: 01392 860452  
 Mobile: 07050 037812  
 Email: [dlysgannon@aol.com](mailto:dlysgannon@aol.com)  
[www.colonichydrotherapyuk.com](http://www.colonichydrotherapyuk.com)

## The Ultimate Choice in Floor Covering

[www.classicfloorspaignton.co.uk](http://www.classicfloorspaignton.co.uk)

Your Local Independent Flooring Specialists For:

- Carpets
- Commercial Floor Coverings
- Vinyls
- Timber Flooring
- Existing Timber Floors Resurfaced
- Non Slip Altro Safety Flooring
- Laminate Flooring
- Vinyl Cladding To Walls

We offer a professional supply & fitting service to ensure complete satisfaction.



Classic Floors by Newton Abbot Flooring

Tel: (01803) 525177, 523784 Fax: (01803) 520359 127-129 Winner Street, Paignton, Devon TQ3 3BP



## THE KITCHEN SHOP

- Specialists in fine kitchen accessories
- High quality cooking utensils
- Bakeware for every occasion
- Cookware for both the discerning amateur and professional cook.
- Knives from the world's leading names.

It is our pleasure to post worldwide.

22 Foss Street, Dartmouth,  
 Devon TQ6 9DR  
 Tel: 01803 834747  
 Fax: 01803 835566

## Smart travel tips

The South Hams is a beautiful place so why not take the opportunity to relax and enjoy the view more often by leaving the car at home? Not only will you be helping the environment, you could also be saving yourself money...

1. If you're not going far, forget the car! The shortest journeys cause the most pollution.
2. Walking is almost perfect exercise and it is free!
3. Cycling is good for you, good for the environment and you'll be saving money on petrol.
4. Take the bus. 99% of Devon's population live in a place with a bus service of some sort. You can't do everything by bus, but try it for some trips.
5. Visit the Devonbus web site [www.devon.gov.uk/devonbus](http://www.devon.gov.uk/devonbus) This has links to other transport-related sites. For rail, see [www.nationalrail.co.uk](http://www.nationalrail.co.uk)
6. Check out the cost of using public transport. Rail journeys often cost less if booked in advance. Get a railcard if you are eligible, or look up Group Save options. For bus users, there are day tickets, multi-journey tickets and day returns, all of which could save you money.
7. Car share on your commute to work or for other regular journeys. Register for free at [www.carsharedevon.com](http://www.carsharedevon.com) to find others going your way, and save money on fuel costs.
8. Learn to drive the fuel-saving way. Accelerate smoothly, avoid hard braking and keep to speed limits. Driving at 70mph can use up to 30% more fuel than driving at 50mph.
9. Travel light by removing unnecessary items from your boot. This will improve fuel consumption and reduce emissions.
10. Make your driving carbon neutral by planting trees to absorb your carbon emissions. Visit [www.futureforests.com](http://www.futureforests.com) to find out how.



## Refurnish – Furniture and appliance re-use

Many people have household items that they no longer want but which many people would be glad to receive.

Unfortunately a lot of these items end up being sent to landfill. However, with the organisation Refurnish items that are still useful are being given a whole new lease of life.

Refurnish has three establishments throughout Devon, with a shop in Totnes for South Hams residents.

Refurnish is a not for profit organisation, which aims to provide low cost furniture and appliances for local people. The shops operate by collecting and receiving items which are no longer wanted by residents. These items are checked over in the workshop and sold on to local people.

The organisation provides a free collection service for suitable and good quality items donated by householders. These items are then sold on a two tier pricing structure.

The general public are charged one price, while those residents receiving any type of benefit or state pension pay a lower amount.



The Totnes shop is located on Wills Road, Totnes Industrial Estate, Totnes and opening hours are:

Monday – Friday 8.30am – 4.30pm

Saturday – 9.00am – 5.00pm

For further information or to arrange the donation of some household goods please call Refurnish on 01626 362313.



The cruise ship Minerva moored at Dartmouth

## Destination South West

A successful project to encourage more cruise ships to Dartmouth has recently been awarded additional funding from the European Union and partners. Destination South West, which has been running for three years, promotes and raises the profile of ports in the south west of England by marketing to cruise companies, shore excursion operators and worldwide charter companies. Partners include South Hams District Council and the Dart Harbour and Navigation Authority.

The project uses the distinctiveness of the region, including its ports, environment, culture and heritage, as a basis for marketing the area to the cruise ship industry. It also aims to show local businesses in the ports and surrounding areas the range of opportunities afforded by a cruise ship visit.

Destination South West's aim is to increase the frequency of cruise ship visits to the region, resulting in significant numbers of additional high spending visitors. The project also aims to extend the cruising season. Cruise ship visits to the South West have increased by 219% since the project started with an increase in the number of passengers by 290% as ships get larger. Passengers come from all over the world and a large percentage have expressed a wish to return to the region for a future holiday as independent tourists.

The average number of passengers on board cruise ships visiting the South West is 800 per visit and every passenger who comes ashore is said to generate £80 per head towards the local economy through a combination of tour participation and local spend. In addition, crew spend in local shops also makes a significant contribution to the local economy.

For further information please visit [www.destinationsouthwest.co.uk](http://www.destinationsouthwest.co.uk)

## Business Skills for Local Women

Free, fun and informal workshops, designed exclusively for women living in the South Hams who fancy doing something a little bit different, are being run by The Women's Business Development Agency this spring.

The four day workshop is all about boosting confidence, learning new life skills, managing stress levels and developing business ideas. Women will also learn how to turn a business idea into a marketable business, and how to develop their own viable business plan.

Women will be given all the knowledge, skills and confidence needed to generate and develop their own business ideas. Even if working for

yourself is the last thing on your mind, motivational and business skills training will help boost your promotion prospects, or help you get that job you really want!

Workshops are running on the following dates, from 10.00am – 2.30pm at Ivybridge Town Hall:

- 26th and 27th April, and 24th and 25th of May 2006
- 5th and 6th of June, and 5th and 6th of July

Financial assistance is available for travel costs and dependency care costs. To book a place on either workshop call 02476 236 111.

## Location Location Location

Looking for business premises in the South Hams? Then look no further than South Hams District Council.

The council wants to encourage the growth of sustainable enterprise in the area and is keen to see new industries develop and established businesses expand and flourish.

Established South Hams businesses or companies looking to relocate their operation to the area, can get advice and support from the council to help find suitable commercial or industrial premises. The council owns numerous premises across the district and publishes a vacant property register of private and publicly owned premises to let.

For more information call 01803 861234 or visit the business pages at [www.southhams.gov.uk](http://www.southhams.gov.uk)

## Advice and Support

Enterprise South Devon (ESD) is the local enterprise agency serving the South Hams. ESD provides a free, confidential business counselling, information and advice service for pre-start businesses and those who have been established for up to three years, with a maximum of 250 employees and a turnover of less than £18.9m.

Services provided by ESD include:

- project evaluation
- business and financial planning
- marketing
- legal support
- access to business premises

Contact Enterprise South Devon:

✉ Enterprise South Devon, Boat Shed, Steamer Quay, Steamer Quay Road, Totnes TQ9 5AL

☎ 01803 849508 or 0845 644 7558  
01626 837001

📧 [enquiries@enterprisesouthdevon.co.uk](mailto:enquiries@enterprisesouthdevon.co.uk)

# Salcombe - Kingsbridge Estuary

In the heart of the South Hams is a very special nature reserve supporting a rich diversity of wildlife.



Sited within the South Devon Area of Outstanding Natural Beauty, the Salcombe – Kingsbridge estuary is both popular with local residents and a magnet for tourists whatever the season.

Strictly speaking the area is not a true estuary as there are no rivers flowing into it - it is more of a marine inlet formed as a ria or drowned river valley. Among the estuary's many habitats can be found mudflats, sandbanks, beaches, underwater cliffs and salt marsh. These provide a wide range of conditions supporting an astonishing diversity of marine wildlife. The whole of the estuary is a Site of Special Scientific Interest and most of it is a local nature reserve.

The natural beauty of the Salcombe – Kingsbridge estuary makes it a popular destination for water sports enthusiasts: just how many of those taking to the water realise what lies beneath?

Nigel Mortimore, South Hams District Council's Marine Conservation Officer is one man who knows more than most about the variety of marine wildlife which lives beneath the estuary waters. He is responsible for co-ordinating the Salcombe – Kingsbridge Estuary Environmental Management Plan which provides a framework for co-ordinated conservation planning. As more people want to spend their leisure

time enjoying water sports or walking by the estuary this puts more pressure on an important natural resource. Add in increasing commercial pressures and a situation could develop where this important natural resource is spoilt and perhaps lost for ever. There is a need for balance and to promote sustainable use, to avoid potential conflict and to protect and conserve the most valued aspects of the Salcombe – Kingsbridge estuary for future generations. All this fits in with one of the council's main priorities of managing the district's distinctive environment whilst enabling access and sensitive development.

Nigel believes it is vital all interested parties work together to conserve what is a very valuable area of the South Hams. He said: "The interdependence of the local community and the estuary underwater environment is poorly understood and very much overlooked. Much of the estuary views we enjoy daily rely on the underwater health of the estuary. We need to remember that we are responsible for the estuary's water quality and health of its marine wildlife because in essence the estuary is at the far end of our kitchen sink and drains."

The southerly latitude and sheltered aspect of the estuary combined with an extreme spring tidal range of almost six metres and a high water salinity due to

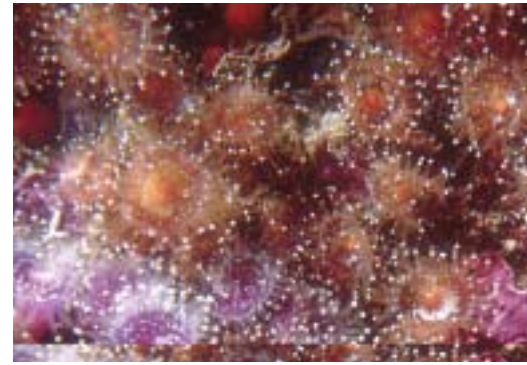
lack of fresh water flowing into the area have given rise to an unusual diversity of habitats and ecology. Several of these habitats are of international and national importance. Of particular importance are the eelgrass beds in the shallow waters on either side of the main channel which are some of the most extensive in the South West. The eelgrass supports a wide range of animals and plants including seahorses and cuttlefish and is the egg-laying or nursery area for several commercially important species of fish.

The estuary is the home port for a local crab fishing fleet and the coast is very popular for scuba diving, recreational yachting, motor cruising and water sports such as water-skiing, jet-skiing and speed boating. The underwater marine habitats along the South Hams coastline are of huge environmental importance because of their ecological richness and the diversity of marine life found there.

Towards the top of the Salcombe – Kingsbridge Estuary the mudflats are a rich source of naturally occurring microscopic organisms. These mudflats are the estuary's life blood and a vital feeding ground for thousands of birds at low tide. Keen-eyed bird watchers might be able to spot curlew, greenshank, redshank or oyster catchers probing the mud for tasty morsels. At certain times of the year it is possible to spot kingfishers, grebes, shelduck and

It's possible to swim past some of the richest underwater reefs in the country





even ospreys alongside the usual wildfowl and waders which inhabit the estuary.

What many people might not realise is at high tide the same mudflats welcome a different dinner guest: thousands of fish make their way up the estuary to take advantage of the same abundant and rich food source. The mudflats are particularly attractive as a food source for flat fish such as flounder.

The Salcombe – Kingsbridge estuary is a great place to enjoy walking, spotting various species of wildfowl on the water and the variety of other animals which inhabit the banks and hedgerows. Otters have been seen in several of the creeks but spotting one can be difficult as these animals are very elusive. The landscape around the estuary is mainly rolling farmland with traditional Devon banks bordering pasture fields and small areas of woodland. It's not just the beauty of the countryside that attracts people to this area of the South Hams. The estuary and neighbouring seashore are popular locations for water sports of all kinds attracting visitors from all over the world.

As divers have realised there is an astonishing range of creatures to be seen underwater. It's possible to find yourself swimming past some of the richest underwater reefs in the country spotting sea cucumbers, massive sponges, corals

and a variety of brightly coloured anemones. It's also possible to catch sight of gigantic spiny starfish and feather stars – part of the starfish family these creatures are filter-feeders using feather-like arms for trapping small items of food in the fronds. The estuary is also home to the longest marine species – the *Lineus Longissimus* – a type of ribbon worm normally about three or four metres long often found under rocks, looking like a ball of badly tied wool! So far, the longest specimen found measured almost 55 metres and was the thickness of a pencil.

Scoble point is a popular location for divers. The wonderful underwater cliffs combined with swift underwater currents, encourages a rich diversity of underwater life on the rocks. Here it is possible to enter a brightly coloured world of Devonshire cup-coral and spectacular jewel anemones. It's possible to spot both these creatures in truly fluorescent colours of yellows, oranges, greens and reds, with the colours becoming brighter the deeper you go.

Balancing the different needs of the estuary users with the necessity to conserve and protect valuable wildlife habitats is no easy task. Sustainability again comes high on the agenda. An Estuary Environmental Management Plan has been prepared with community involvement to try and manage human activity in a way that minimises the environmental impact of the various recreational uses of the estuary. The plan aims to conserve the environment

of the estuary in its widest sense for its biological, historical and aesthetic interests and well as for local residents who want to be able to enjoy the estuary in the future. This means persuading and encouraging people to take an interest in the estuary environment and learn more about its wide range of marine life that exists in the area.

Why not join Nigel Mortimore on one of several guided walks he leads throughout the year. Details of the next planned rambles are:

- **Saturday 29th April** - Rock pool ramble over the wave exposed rocks at South Sands and perhaps see jewelled anemones, electric blue limpets and maybe even coral. Wear warm clothing, suitable footwear and expect to get damp! The short walk involves clambering over rocks so is not suitable for toddlers or dogs. Meet at South Sands 13:30 Adults £3, children £1. Car parking at South Sands can be limited.

- **Saturday 27th May** – A rock pool ramble over some of North Sands intertidal rocky shore, looking at the colourful communities of seashore life. Over slippery and uneven rocks so unsuitable for toddlers or dogs. Please wear appropriate clothes and wellies – expect to get damp! Meet at North Sands car park 11:30. Free.



## New planning vision

The Council's Local Development Framework (LDF) Core Strategy – the new planning vision for the South Hams has been published, pointing the way to more affordable homes, new employment developments, better access to services and a quality environment. The strategy will be the bedrock on which the council and its partners continue to strive to deliver what local communities need.

It is the key document in the new portfolio of planning papers which the council has to produce under the Government's new LDF system. As the first local authority in the south west, and amongst the first in the country to publish one, we are being studied by the Office of the Deputy Prime Minister to analyse how the new system is working.

Last year there was widespread consultation, public events and a lot of input into the emerging strategy. The version now published is the one the council wants to adopt. It will be examined by a Planning Inspector this summer, before adoption in January 2007.

The Strategy proposes almost 900 new homes in our market towns and over 500 in smaller towns and villages, with two thirds of all these being affordable. The aim is for 50% of new housing to be on brownfield sites. There are requirements for good quality design, infrastructure provision in phase with development, dealing with climate change and rural diversification.

The Core Strategy can be viewed online at [www.southhams.gov.uk](http://www.southhams.gov.uk)



**ANSELL & KILLICK**  
QUALITY BATHROOMS LTD

50-52 Winner Street, Paignton  
tel: 01803 554 867 [www.ansellandkillick.co.uk](http://www.ansellandkillick.co.uk)

# Council priorities

South Hams District Council has one aim - to improve the well being of the people of the South Hams.

The district council provides a wide range of services to residents, businesses and other public or voluntary organisations in and beyond the district. From street sweeping and bin collection through to building control and benefits, the staff and members of South Hams District Council work hard towards this shared vision.

Improving the well being of the people of the South Hams is a very broad vision, so we asked you – the people of the South Hams – what you felt was most important. From your feedback we were able to identify six priorities that now form the core of everything the council does.

These priorities are:



### 1. Affordable housing

Securing a supply of housing for local people at affordable levels



### 2. Good jobs

Creating the conditions for the growth and maintenance of quality economic activity



### 3. Retain the district's character

Maintaining the district's distinctive environment whilst enabling access and sensitive development



### 4. A clean district

Maintaining a clean environment



### 5. An accessible council

Work with others to improve access to key services



### 6. Value for Money

Improve service performance in a cost-effective way

In future issues of the magazine, articles will investigate the issues surrounding each priority in turn, looking at what the council is doing in these areas and bringing you news of new developments and achievements.

We have given each priority a logo. Whenever one of the logos appears in the magazine by an article, this means it is linked with one of the priorities identified by the people of the South Hams.

Affordable housing is top of the list, so that is where we will begin in the summer issue of South Hams Magazine, due to hit your doormat in July.

## Sherford update

It's been over six months since the autumn magazine where we focussed on the Sherford development planned for the western end of the district. Since then plans for the new community have been progressing well.

We have been analysing responses from local residents and community groups to the Area Action Plan published in 2005.

Discussions have taken place with major service providers, the local community and the developers to draw up a package of services and facilities for Sherford. This includes education, health care, policing and the fire & rescue service.

A workshop was held in February to discuss how to govern the new community at Sherford. Numerous interested parties took part including South Hams and Plymouth community representatives, district and parish councillors as well as service providers and the developers. This workshop was particularly constructive and the outcomes will help to guide work on community development, making sure we are creative and innovative every step of the way.

The revised Area Action Plan for Sherford will be submitted to the Secretary of State at the end of June this year. There will be an enquiry into the plan towards the end of 2006 and an Inspector appointed by the Secretary of State will then prepare a report which will lead to the final Sherford Area Action Plan being approved in summer 2007.

A planning application for Sherford is expected around early autumn 2006. The application will be considered at the Area Action Plan Enquiry before being decided in early summer 2007. If the application is granted planning permission, construction work could start as early as autumn 2007.

**We will be bringing you regular updates on all our major projects, including Sherford, in future issues of the magazine. For more information at any time please visit [www.southhams.gov.uk](http://www.southhams.gov.uk) or call 01803 861234.**

## Crime doesn't pay

There are many ways that someone might try to falsely claim housing, council tax or unemployment benefits. If a person is claiming benefits they are not entitled to, then the genuine claimants will not get as much help as they otherwise might.

Benefit fraud is a crime. If you know of someone who is committing benefit fraud, call our Fraud Line anonymously on 01803 861282.

In 2005/6 South Hams Council prosecuted nine people on charges of benefit fraud and there are four further cases pending. To date, the council has been successful in every prosecution undertaken.

The council has a dedicated fraud team to tackle false benefit claims and you can be sure that every report will be investigated to its full conclusion.

## New round of grant funding

Round four of the Community Grant Fund opened for new applications on Monday 30th January 2006.

The Community Grant Fund provides up to 50% match funding towards projects which meet a council priority, such as maintaining a distinct and clean environment, supporting the economy and providing access to services. All projects must involve the community and have their match funding identified.

Projects successful in the last round included funding towards the provision of IT equipment in a community centre and a grant towards the extension of a village hall to provide a range of new services and improve access.

If you have an idea for a community project which you feel is eligible, please contact the Community Development Team on 01803 861234. Further information is available at [www.southhams.gov.uk](http://www.southhams.gov.uk)

The deadline for applications to round four of the Community Grant Fund is 4.30pm on Friday 30th June 2006.

## Hassle free benefits

South Hams District Council is launching a brand new scheme to assist customers who want help with their rent and Council Tax bills but hate filling in forms!

Many customers find paper application forms daunting because of their length and the time it takes to fill them in. But now, with the help of an exciting new electronic claim form developed by Northgate Systems, we are hoping to take the hassle out of the process for new customers. SHDC is the first council in the country to use the new electronic claim form, called 'Assert', in this way.

No longer will customers have to wade through a mass of complicated paper forms. A visiting officer from the council will help them to make their application in the comfort of their own homes. The electronic form is much simpler and cuts out any unnecessary questions as the officer works through the application process with the customer. At the end of the application process the information will be entered directly into the council's computer. No paper, no hassle, and the customer can find out just how much help they can get more quickly...in some cases we will be able to tell customers straight away how much they qualify for.

It currently takes South Hams District Council just over 28 days, on average, to process a new benefit claim. This is comfortably within the top quartile performance for councils nationally. The most common reason for delays in processing claims is due to difficulties in collecting all the information and evidence needed from customers. By introducing this system the council hopes to encourage more people to apply for the help they're entitled to and halve the time it currently takes to process claims.

The first point of call for anyone wishing to claim help with their rent or Council Tax is the Council's Benefit Helpline on 01803 861234.

## Dogs on beaches



### Seasonal Dog Banned Beaches

By-laws prohibiting dogs between 1 May - 30 September are in operation for:

- South Sands, Salcombe
- Mouthwell Sands, Hope Cove
- Chalaborough
- Bigbury (partial ban)
- Santham (partial ban)

Private bans have been introduced by the owners of:

- Blackpool Sands
- Mathecombe Beach
- Worbury
- Sandy Petour (Savants Estate)

The Dog Warden can be contacted on 01803 861234

It is an offence punishable by a fixed penalty fine for dog owners in most public places to fail to clear up after their dogs. This is enforced by the signs in the areas and regular dog warden patrols.

Part of the South Hams

South Hams District Council

Between 1st May and 31st September each year certain beaches in the South Hams are banned to dogs.

Some beaches have bye laws in place preventing owners exercising their dogs there during the summer season, whilst some beaches have private bans.

Check out the map (left) to see where dog bans are in place near you.

There are many alternative beaches in the South Hams where properly controlled dogs are welcome throughout the year, please contact 01803 861234 for information of our year round dog friendly beaches.

## Spring in the South Hams

The Spring Events Brochure is now available listing the many and varied ways to enjoy the South Devon Area of Outstanding Natural Beauty.

The brochure is packed full of fun, informative and unique ways to enjoy the stunning surroundings of the South Hams. From nature walks to sculpting with willow, canoe races to bush craft, there is something for every taste!

For your copy call 01803 861234 or visit [www.southdevonaonb.org.uk](http://www.southdevonaonb.org.uk)



## New-look play park for Ermington

Ermington play park has had a £25,000 facelift and is now the coolest place to hang out for local children!

The new-look play park has been designed for youngsters between the ages of eight and 14 years old, some of whom helped choose the new equipment including a six metre high climbing net, a mini skate park and an adventure trail.

The play park is on Ermington Recreation Ground, just opposite the village school, whose pupils were invited to help open it at a special ceremony in February.

The park is in three parts. The first with a pyramid climbing net, balance bars and wobble boards. The second part is for local skateboarders, providing a half-pipe, grind rails and a 'fun box' for younger skaters. The third section of the play park has a shelter where youngsters can gather to hang out and socialise.

Ermington Parish Council, Ermington Village Fund, South Hams District Council, and the Government's Living Spaces fund have all contributed to this project. South Hams District Council, who owns the play park, has committed to maintain it for the enjoyment of local youngsters for many years to come.

## French Fancy

Torbay Symphony Orchestra brings its French programme – featuring Debussy's La Mer and Berlioz' Symphonie Fantastique – to the district in June. See them on the following dates:

- Fri 9th June, 7.30pm, the Flavel Centre, Dartmouth. Tickets on the door or by calling 01803 839530
- Sat 10th June, 7.30pm, St John's Church, Totnes. Tickets on the door or from Totnes TIC on 01803 863168

# Events and activities Spring 2006

The South Hams really is somewhere special to live, work and play. So why not make some time to enjoy one of the many interesting and exciting events taking place around the district over the next few months...

## APRIL

- 22-23rd April **St George's Day Trail**. Your dragon-hunting skills are needed at Berry Pomeroy this weekend from 10am – 5pm. Adults £3.60; Concession £2.70; Child £1.80; Members Free. Call 01803 866618.
- 22-23rd April **Dolls House Fair**, Yealmpton Community Centre from 10.30am-4pm. Full disabled access, refreshments and free parking. Adults £1.75, Senior Citizens £1.25, Children 60p. Family ticket £4.
- 23rd **Ivybridge Walking Festival**, until 3rd May. Call 01752 897035 for details.
- 30th 'Harberton Folk' presents **Battlefield Band** in concert, 7pm at the Ariel Centre, Totne
- 30th **Modbury fair week**, until 7th May.
- 30th **Worm Charming Competition & Village Festival**, Blackawton.

## MAY

- 1st **Cornwood Fair in the Square**. Fun day for all the family from 11am till 4.30pm. Free admission, stalls, demonstrations, music and refreshments.
- 6th **French market & street entertainment**, Erme Court Car Park & Town Centre.
- 10th **Mozart's Requiem** performed by young musicians from the South West, including choirs from Ivybridge Community College and King Edward VI Community College. St. Andrew's Church, Plymouth from 7.30 pm. Tickets £8, concessions £5, available on 01752 691000 or 01803 869200.
- 11th **Moor to Sea watercolour classes**, Lukesland Gardens, Ivybridge. Until 13th May. Visit [www.moortoseaarts.co.uk](http://www.moortoseaarts.co.uk) for details.
- 12-14th **Dart Music Festival**, Dartmouth. Call 01803 833943 for details.
- 13th **Canoe races at The Malters Arms**, Tuckenhay. Starts 3pm. Call 01803 865301 for details.
- 13th **Ivybridge Horse Show & Family Dog Show**, Filham Park from 9am-6pm. Call 07817 816244 for details.

- 14th **Charity Plant Sale**, Lukesland Gardens, Ivybridge from 2-6pm. Stalls from local nursery growers in aid of Ermington Pre-School.
- 23rd **Jazz in the Garden**, Lukesland Gardens, Ivybridge. Enjoy music from Ivybridge Community College's Big Band in the delightful setting of Lukesland Gardens. Bring your own picnic or enjoy refreshments from the tea rooms. Entertainment starts from 6pm. Adults £5, Children £2.50 all proceeds donated to the Street Children of Nepal charity.
- 26-29th **Totnes open studios**. Discover the art alive in Totnes by visiting artists as they open their studios for the public. Call 01803 864483 for details.
- 28-29th **1950s Branchline Weekend**, South Devon Railway, Buckfastleigh. Call 01364 642338 for details.
- 28-29th **Medieval Combat**, Berry Pomeroy Castle. Step back in time to the Middle Ages and enjoy an afternoon of Medieval combat, dance and living history displays from 11am – 5pm. Adults £4.90; Concession £3.60; Child £2.40; Members Free. Call 01803 866618 for details.
- 30th **Medieval Knights Trail**, Berry Pomeroy Castle. The Queen has asked you to invite the English Heritage Knights and Squires to a banquet. Can you find them and deliver this invitation in time? 10am – 5pm, until 4th May. Adults £3.60; Concession £2.70; Child £1.80; Members Free. Call 01803 866618 for details.

## JUNE

- 9-11th **Salcombe Festival**
- 11th **Salcombe Gig & Rowing Regatta**. Call 01548 843927 for details.
- 17-25th **South Brent Carnival Week**
- 18th **Fathers Day at Pennywell Farm**. A hands on Falconry Special for all dads visiting today with the chance to be photographed with a magnificent bird of prey. Visit [www.pennywellfarm.co.uk](http://www.pennywellfarm.co.uk) for information.
- 24th **Strawberry Fair, Harberton**. From 2pm in the village square in front of the Church House Inn.

- 24th **South Brent Carnival Procession**, starting at 6pm.
- 24-25th **Dart Art Weekend**, Bayards Cove & Royal Avenue Gardens, Dartmouth from 10am – 5pm. Immerse yourself in creativity as the regions finest artists take to the streets all in aid of Children's Hospice South West.
- 26-30th **Moor to Sea** watercolour classes, Lukesland Gardens, Ivybridge. Visit [www.moortoseaarts.co.uk](http://www.moortoseaarts.co.uk) for details.

## JULY

- 1st **Filham Fun Day**, Filham Park, Ivybridge. Fun for all the family from midday till late. Call 01752 895959 for details.
- 7-17 **"Way with words"** festival, Dartington Hall. Call 01803 867373 for details.
- 8 **Ugborough Village Fair**
- 11 **Dartmouth Charity Day**, Royal Avenue Gardens, Dartmouth, 10am-4pm. Dartmouth's favourite charities join together with a fabulous array of stalls and entertainment all for a good cause. Refreshments served all day.
- 15-22 **Kingsbridge Fair week**. Call 01548 853531 for details.
- 21 **Haunted Tours**, Berry Pomeroy Castle. Take a special ghost tour and hear tales of dark deeds and ghostly happenings at Devon's most haunted castle. Pre-booking essential on 01803 866618.
- 22 **Cornwood Challenge & Fun Run**. 10km challenge & 4km fun run. Ram roast & music from 6pm. Call 01752 892627 for details.
- 22 **Medieval Knights Trail**, Berry Pomeroy Castle. For details see May listing. Runs until 3rd September.
- 26 **Yealmpton Show**
- 27 **Totnes Agricultural Show**. Call 01548 821070 for details.
- 28 **Haunted Tours**, Berry Pomeroy Castle. Details as above.

*Disclaimer: South Hams District Council cannot be held responsible for the events listed above. We recommend you call ahead to check times and details wherever possible.*

# Events and activities Spring 2006

## Farmers Markets

Farmers markets are an ideal way to try before you buy and talk directly to the producer. They are also a fun way to buy fresh fruit, meat, cheeses, breads, plants and much more whilst supporting your local farmers. Every weekend you will find local produce on sale in the South Hams, why not visit your local farmers market at one of the following places:

- Kingsbridge – the Quay  
1st Saturday of the month
- Dartmouth – the Old Market  
2nd Saturday of the month

- Ivybridge – Glanvilles Mill car park  
3rd Saturday of the month
- Totnes – the Civic Hall  
Last Saturday of the month
- Landscope, near Staverton, will be holding its popular Breakfast Market in the village's Victory Hall on the 1st Saturday in May and June from 9.30am until noon. There will be a wide range of stalls including fresh organic vegetables, free range eggs, homemade cakes, jams, breads, arts, crafts and textiles. Admission is free, and refreshments are available to enjoy whilst you shop.

If you have an event taking place in the South Hams during August, September or October '06 that you would like to see listed in the Summer 2006 edition of South Hams magazine then please email details to [public.relations@southhams.gov.uk](mailto:public.relations@southhams.gov.uk) or write to the address on p3.

*Disclaimer: South Hams District Council cannot be held responsible for the events listed above. We recommend you call ahead to check times and details wherever possible.*

## Something Special in the South Hams

devon  
artsculture  
growing the art, craft and music industries of our region



Devon Artsculture has recently celebrated its first birthday. Although a relatively young project, it has done much to encourage and support local artists and share their work within the county & beyond.

### What is Devon Artsculture?

Devon Artsculture is a dynamic, creative programme aimed at promoting economic development and regeneration through the arts in the rural areas of Devon. Based

at Dartington Hall, the organisation launched the £1 million+ programme at the beginning of 2005. It currently operates in the four rural districts of the county, which qualify for European Regional Development Fund Objective Two grant funding.

### Who is eligible?

Everyone involved in the creative arts that lives or works in the South Hams. Other areas of Devon are covered by the scheme which also takes in North Devon, Torridge and West Devon.

### What support is on offer?

Qualifying artists benefit from a bespoke package of support with the result that Devon Artsculture's work is as diverse as the artists who have signed up! Professional and business development through seminars, workshops and surgeries; marketing support and advice; a multi-functional website; networking sessions; mentoring; practitioner lead project work; and opening routes to market through the support of performance events, exhibitions and sales are all part of our support package. The only thing that Devon Artsculture won't do is award grants.



### Who benefits?

#### The creative community

The programme will support creative practitioners by offering business support measures and economic opportunities directly to small businesses, start-ups, individuals and creative freelancers in rural Devon.



#### The local economy

Devon Artsculture will support business growth while helping to retain economic wealth where it is generated. Its aim is to promote economic development and rural regeneration through the arts.

#### The people of Devon

Local people are the primary audience and first beneficiaries of the county's creative output. Devon Artsculture represents a true celebration of the creative arts in Devon, making its creative output available to a very large audience far beyond the physical boundaries of the county.

**Devon Artsculture has been involved in staging many local events, including craft fairs, concerts and by inviting local residents to support local artists such as the popular Harbertonford Open Studios event. Devon Artsculture has a wide range of events and activities planned throughout the summer, for more information please visit [www.devonartsculture.org](http://www.devonartsculture.org)**

**Please support your local artists and help keep the South Hams somewhere really special to live and work and play.**

# New patients welcome

## General and cosmetic dentistry

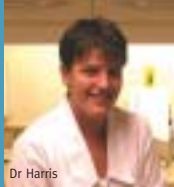
- Sympathetic dental treatment
- NHS dental service for children
- Implants, crowns, veneers inlays bridges
- Hygienist plus a qualified Oral Educator
- Same day emergency treatment



Dr Richardson

## Teeth whitening at unbeatable prices

- A brighter whiter smile in about 1 hour
- Guaranteed results using the finest materials
- 10 shades, pain free and no regression of colour



Dr Harris

## Facial rejuvenation

- Facial rejuvenation treatment provided by Dr Paul Richardson
- Offset the ageing process for lips, eyes and wrinkles
- Look and feel years younger
- All treatment undertaken in a relaxed and friendly atmosphere
- Comfortable reception and modern advanced surgeries
- Extensive private car parking, convenient and level easy access close to town centre
- Interest free credit if required

Brixham's longest established dental practice



Brixham Dental Practice 19 New Road, Brixham TQ5 8NB Telephone 01803 853980

# Is your independence important to you?

Goldsborough Homecare has over 20 years experience providing services to people who need support to remain independent in their own homes.

We are particularly experienced in delivering the following services in your local area:

- Personal Care** – Assistance with activities including bathing, rise/put-to-bed, etc.
- Domestic Help** – Assistance with activities such as shopping, cleaning, laundry, etc.

Goldsborough understands that your independence is most important to you. We aim to help you to maintain this independence by supporting you in ways you feel would help, whether its just for a couple of hours per week or 24 hours a day.

If you (or someone you know) would like to find out more, or would like to arrange an informal, free no obligation meeting to discuss your needs, please contact us on:

**08456 055533**

(Local charge rate number directly to your local office. Mobile networks may vary)



# DYNASTY DOORS

Automatic Roller Garage Doors



Automatic Roller Doors from **£1198.00 FITTED**

- Safe & secure • Stylish & convenient
- Simple to operate auto key fob opening
- 12 colour options • Low maintenance

**01752 895444**  
 Filham Moor Ind. Est. Ivybridge  
 Please call for opening times

**Woodlands**  
 DARTMOUTH

Action, Animals & Acres of Beauty

NEW POLAR PILOTS

NEW DUNE BUGGIES

NEW SAND DIGGERS

NEW BIG TOP PLAY CENTRE

Massive INDOOR PLAY

Woodlands Leisure Park, Blackwite, Totnes, South Devon TQ9 7DQ Tel: 01537 658718  
 Email: fun@woodlandspark.com • Web: www.woodlandspark.com  
 Woodlands Leisure reserve the right to close the park at any attractions without prior notice.

# James Holland INTERIORS

...it's in our nature

bespoke kitchens, bathrooms & bedrooms  
**showroom open now**  
10am till 5pm

**James Holland**  
INTERIORS

Stidston Rural Ind. Park  
South Brent, Devon TQ10 9JT  
**T 0870 199 3937**  
part of the MDL group



conservatories • kitchens • staircases • windows • doors • purpose made furniture • restoration

## traditionally modern

traditional joinery with a modern approach

James Holland Joinery have been making all types of furniture for 10 years - from small one-off designs to complete house installations, from traditional finishes to the ultra-modern minimal architecture that is the fashion today.

Our workshop has the latest equipment which allows us to combine the skills of our master joiners with the accuracy of digital woodworking technology.

We manufacture, among other things, Board Room tables, office desks, technical furniture, conservatories, doors, windows - in fact, any item in timber - if it can be drawn, it can be made.

Why not give us a call for further information or an estimate



**James Holland**  
JOINERY

**T 0870 199 3937**

Stidston Rural Ind. Park, South Brent, Devon TQ10 9JT