

South Devon Landscape Character Assessment Interactive Mapping

Please read and take note of the following [Licence Agreement](#) as by using the *Landscape Character Assessment Mapping* you agree to be bound by these terms and conditions for access to datasets, including use of Ordnance Survey data.

The Landscape Character Assessment Mapping allows you to view Ordnance Survey maps of the South Hams and South Devon Area of Outstanding Natural Beauty (blue hatched area), overlaid with Landscape Character information and the AONB boundary. You can browse the mapped data; look up addresses by entering a post code or street name; and search for specific grid references before viewing details extracted from the South Devon Landscape Character Assessment relevant to a location of your interest.

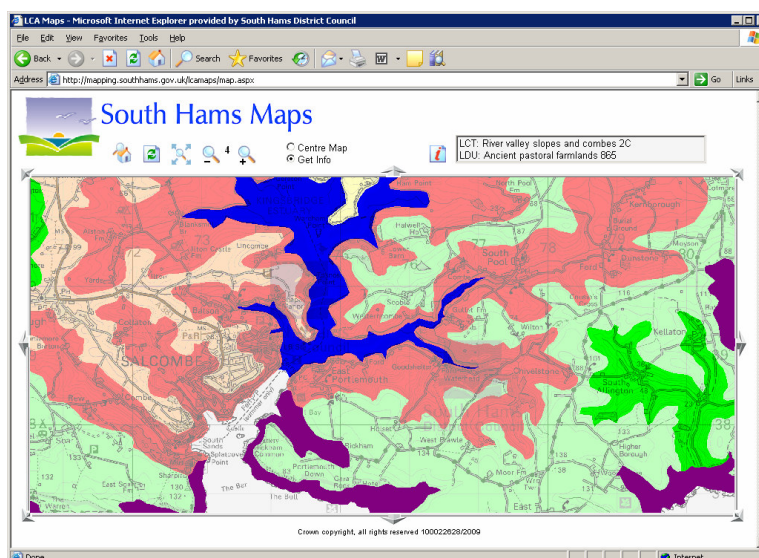
How to use the web based mapping:

- Step one:** Centre the map on the location of interest to you (Tip - ensure the "Centre Map" option is checked before clicking on your location of interest on the map).
- Step two:** Zoom in until the required level of detail is provided (Tip – click on the + magnifying glass to zoom in and the – to zoom out. There are 12 zoom levels in total – the higher the number, the finer the detail on the map).
- Step three:** Select "Get Info" and click on your location of interest.
- Step four:** The LCT and LDU names for the location you clicked on will now have appeared in the top right corner of the map window. Select one of the two options, an LCT or an LDU by clicking on the name itself, before clicking on the red "i" (information icon) to open up a related summary. Save or print as needed.
- Step five:** Save or print the map as needed via the "File" menu and "Print" command (Tip - adjust your printer settings as needed)
- Step six:** Return to the full LCA map view by clicking on the middle icon "zoom all" in order to examine another area.

Tip: Consider using an Address, Post Code or Ordnance Survey Map Grid Reference to search for a location, and bypass steps one and two. From the main map screen, click on the "Search for an address or grid ref" icon to begin your search.

Go to the web based mapping: <http://mapping.southhams.gov.uk/lcamaps/map.aspx>

Example screenshot centred on fields to the east of East Portlemouth.



Using the Map Tools



LCT: River valley slopes and combes 2C
LDU: Ancient pastoral farmlands 865

A number of basic map tools have been provided, represented by icons that can be clicked on to perform a particular function. Located toward the top of the map window, and from left to right, these are:

- Search for an Address or Grid Ref
- Redraw the Map
- Zoom All
- Zoom Out
- Zoom In
- Centre Map
- Get Info

If in doubt as to which function the icon performs, hover your mouse pointer over the icon to reveal a short description.

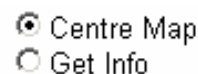
Moving around the map

To move the map to the North, South, East, West, or diagonally to the North East, South East, South West, North West of the current map view, click on the arrows located around the edge of the mapping area – the mapped area will move in that direction and redraw accordingly.



Centring the map

If you know the location you wish to examine in more detail, ensure the Centre Map option is checked, use the mouse to point at the location of interest to you and click the left mouse button to centre the map – the map will redraw, centred on your chosen location.



Zooming

There are 12 available zoom levels – 1 shows the largest area in least detail and 12 the smallest area in most detail. Use the – magnifying glass icon to zoom out and the + magnifying glass to zoom in.



Returning to the full map view

Use the “Zoom All” tool to display the full map area again.



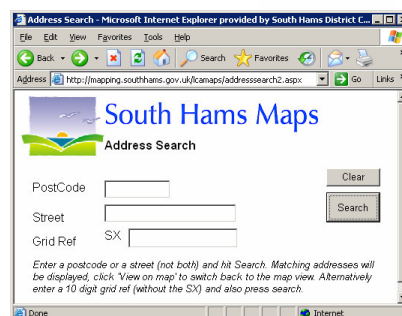
Searching based on known information

Use the “Search for an address or Grid Ref” tool to perform a search for a specific Post Code, Street or Grid Reference.



For Grid References, omit the SX prefix and enter the number in 10 figure format with a single space between the eastings and northings. If you only have a six figure (made up of 3 eastings and 3 northings) or eight figure (made up of 4 eastings and 4 northings) and the appropriate number of zeros after both eastings and northings to give 10 figures.

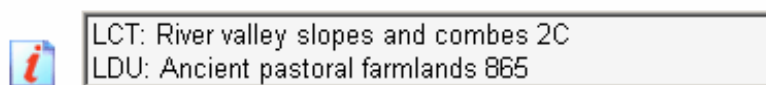
Eg for SX 746 385 enter “7460038500” in the Grid Ref box.



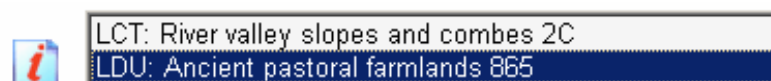
Obtaining Character Type and Description Unit summaries

The mapping shows the extent of different Landscape Character Types (LCTs) and their component Landscape Description Units (LDUs). To find out more about the particular characteristics of either an LCT or LDU at a particular geographical point of interest, first check the “Get Info” option before then clicking on your point of interest on the map. A box will appear in the top right corner of the map window indicating which LCT and LDU relate to your chosen location.

- Centre Map
- Get Info



To then open a pdf format document that summarises their characteristics, first select the text of the LCT or LDU (note that both cannot be opened at the same time)



... then click on the red “i” icon. A summary pdf will open that you may save or print as needed.

Redraw the Map

Use the redraw function to refresh the mapping in case of any display problems.



Notes

Screen Resolution

The mapping is best viewed at a screen resolution of 1024 x 768. Though the mapping can be viewed at higher screen resolutions, it will occupy a smaller portion of your screen. Screens that are set to a resolution lower than 1024 x 768 will still be able to view the mapping but will require the use of both horizontal and vertical scroll controls.

“Urban”

There are a number of landscape description units whose character is either wholly or predominantly urban (eg parts of Totnes, Torbay fringe, around Plympton and Plymstock). In these cases they are shown as having an Urban Landscape Character Type and do not have Landscape Description Unit summaries as the underlying landscape character is no longer significantly evident. Where a Landscape Description Unit is larger than the urban area itself (as in the case of Dartmouth, Salcombe, Kingsbridge or Ivybridge) and the natural character of that LDU dominates, the LDU takes on that Character Type (ie the built elements of Dartmouth form part of the River Valley Slopes and Combes Character Type).

The South Devon AONB – blue hatched area

The protected landscape of the South Devon Area of Outstanding Natural Beauty is shown on the landscape character mapping as a blue hatching overlay and remains visible at all zoom levels.

Character Type and Description Unit boundaries

You may notice when viewing the Character Type and Description Unit data at fine scales (less than 1:50,000) that the boundaries do not appear to align with obvious features on the mapping. These anomalies are due to the difference between the detail available in the fine scaled mapping and the scale at which the Landscape Character Assessment itself was carried out at – 1:50,000. In practice there is rarely a thin and exact line between one area and its neighbour - the line should be treated as an indication of a transition zone.

This *How to* guide has been compiled by the South Devon AONB Unit.