

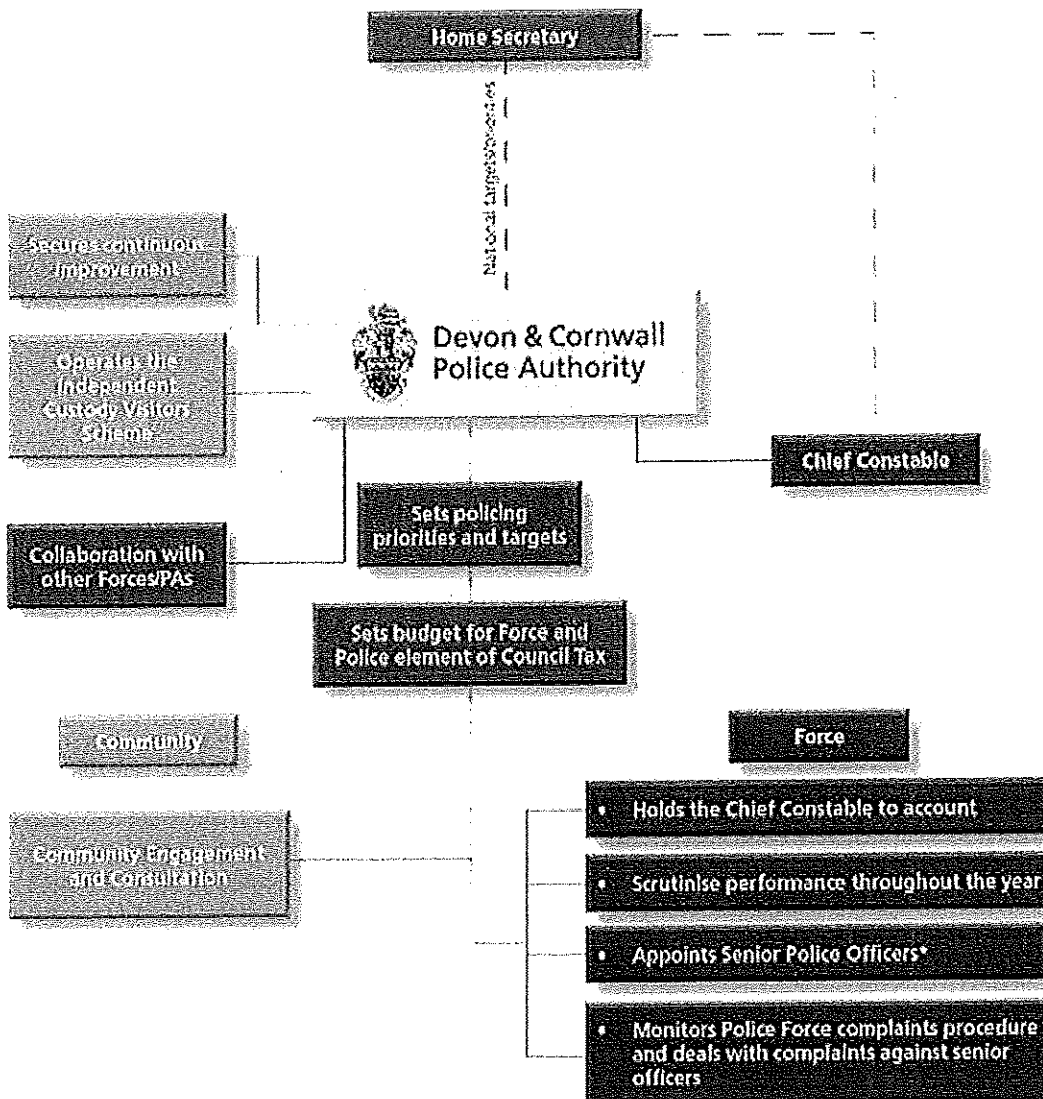
Item 7

## What We Do

The Devon and Cornwall Police Authority has a duty to "secure the maintenance of an efficient and effective police service" for Devon, Cornwall and the Isles of Scilly.



The Authority has the responsibilities shown in the diagram:



[Back To Top](#)

[A PDF copy of the Devon & Cornwall Police Authority 'An Introduction' DL Leaflet](#)

### Sets Policing Priorities and Targets

The Annual Policing Plan which incorporates the Annual Report, is prepared jointly by the Authority and the Constabulary. It outlines policing priorities and targets for the year and

The Police Authority Strategic Plan sets out the medium and longer term strategies for policing the area.

[Our plans, performance & reports](#)

[Back To Top](#)

### **Holds the Chief Constable to account and scrutinises performance throughout the year**

Throughout the year the Police Authority, via its Performance Management Committee, scrutinises the force's performance against the targets set out in the Policing Plan. It also monitors against performance indicators set by the Home Office, the Audit Commission and Her Majesty's Inspectorate of Constabulary (HMIC).

### **Secures Continuous Improvement**

Best Value is the name given to a process of reviewing services to make sure that they provide a suitable level of service in the most appropriate way. The Police Authority and the Police Force work together to ensure that everything they do is informed by Best Value principles which includes the following components:

- Challenge - why is the service being provided and are the service levels appropriate;
- Compare - the performance of the service with other similar services
- Consult - what do people think about the service
- Compete - what is the best way of providing the service at the required levels

Each review will result in an action plan for the service to ensure that it continuously moves towards the target of providing / achieving Best Value.

The final reports of Best Value Reviews are available in the [Plans, Performance and Reports](#) section.

[Back To Top](#)

### **Monitors the Force Complaints Procedure & Complaints Against Senior Officers**

Complaints against senior officers - the Chief Constable, Deputy Chief Constable and Assistant Chief Constables - are dealt with by the Authority, which would also be directly responsible for disciplining these officers.

The Authority's role in dealing with complaints against police officers in lower ranks, or members of police staff, is to ensure that the Force has in place a robust and efficient system for dealing with those complaints. The Professional Standards and Complaints Monitoring Group regularly review the procedures and how well they are working, examine data relating to the number, type and location of complaints received and randomly sample individual case files to make sure that they have been dealt with appropriately.

### **Appoints Senior Police Officers**

Constable and the Assistant Chief Constables. All police staff are employed by the Authority but are appointed by and under the direction and control of the Chief Constable.

[Back To Top](#)

### **Sets the Budget for the Police Force**

The Police Authority has a legal responsibility to set the police budget. Central Government indicate the level of funding they will provide through grants. Any additional money required for the police service can only be raised through the local council tax. The Police Authority sets the level of the police element of the council tax each year. The tax for 2008/2009, for a Band D property is £142.19 per household.

The budget incorporates two different types of expenditure; the revenue budget meets all day to day running costs including salaries whilst the capital budget meets the cost of land, building and major equipment.

The revenue budget for 2008/2009, is £268,084,994m and the capital budget is £18.3m.

### **Operates the Independent Custody Visitor Scheme**

Independent Custody Visiting is the well established system whereby volunteers attend police stations to check on the treatment of detainees and the conditions in which they are held and that their rights and entitlements are being observed. It offers protections to both detainees and the police and reassurance to the community at large.

[Find out more about the scheme and how you can become a custody visitor.](#)

[Back To Top](#)

### **Community Engagement and Consultation**

One of the key objectives for the Police Authority is to consult widely with local people about the policing of their area. This helps the Authority set local policing priorities and targets for the police force and provides us with feedback on how you feel the police service are delivering their service.

The Police Authority consults in many ways.

One of the ways is by holding Police Authority Liaison Meetings. Around forty eight liaison meetings are held each year throughout Devon and Cornwall to give you the opportunity to express your views. They are open for everyone to attend. A Member of the Authority will be there to hear your views and feed them back to the full Authority. Comments received will assist in the drafting of the Policing Plan.

[More information regarding meetings in your local area.](#)

Surveys are sent out regularly to users of the police service including members of the public using police stations, victims of burglary, violence and other crime. The Police Authority use the results to help monitor how well policing services are being delivered.

Police Authority Panels are groups of members of the public who volunteer to meet twice a year to discuss local policing issues as well as force-wide strategic policing matters. There are two panels, one for Devon and one for Cornwall. Any issues raised are fed back to

Using its webcasting facilities, the Police Authority conducts on-line surveys about specific policing issues.

In addition the Police Authority attends and consults at many public events throughout the year such as Respect Festivals, Pride, youth events and university induction weeks.