

## 5.5 Chillington and Stokenham

### Chillington and Stokenham EbD

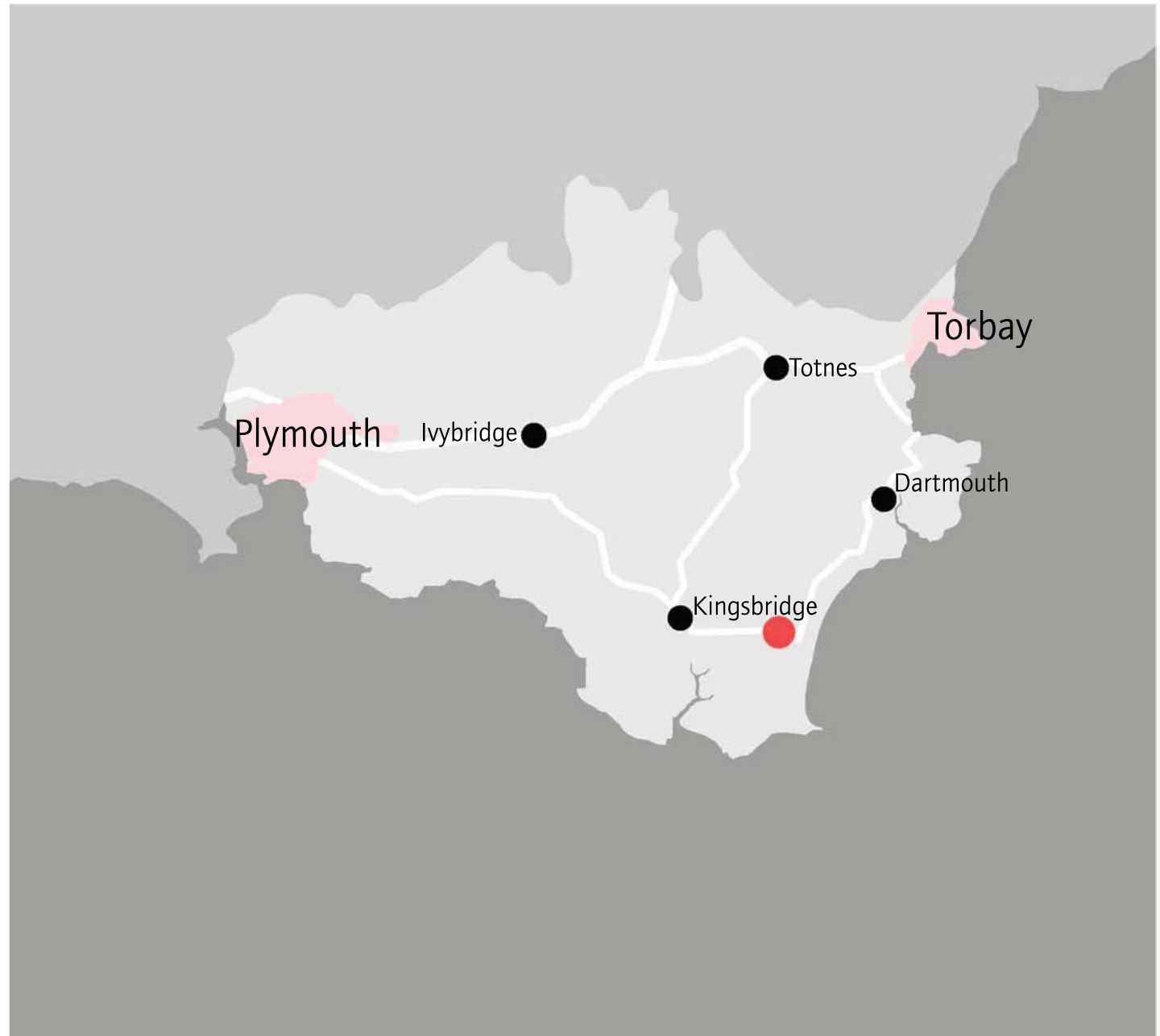
The EbD was held in Chillington Methodist Church, on the 18th June 2009.

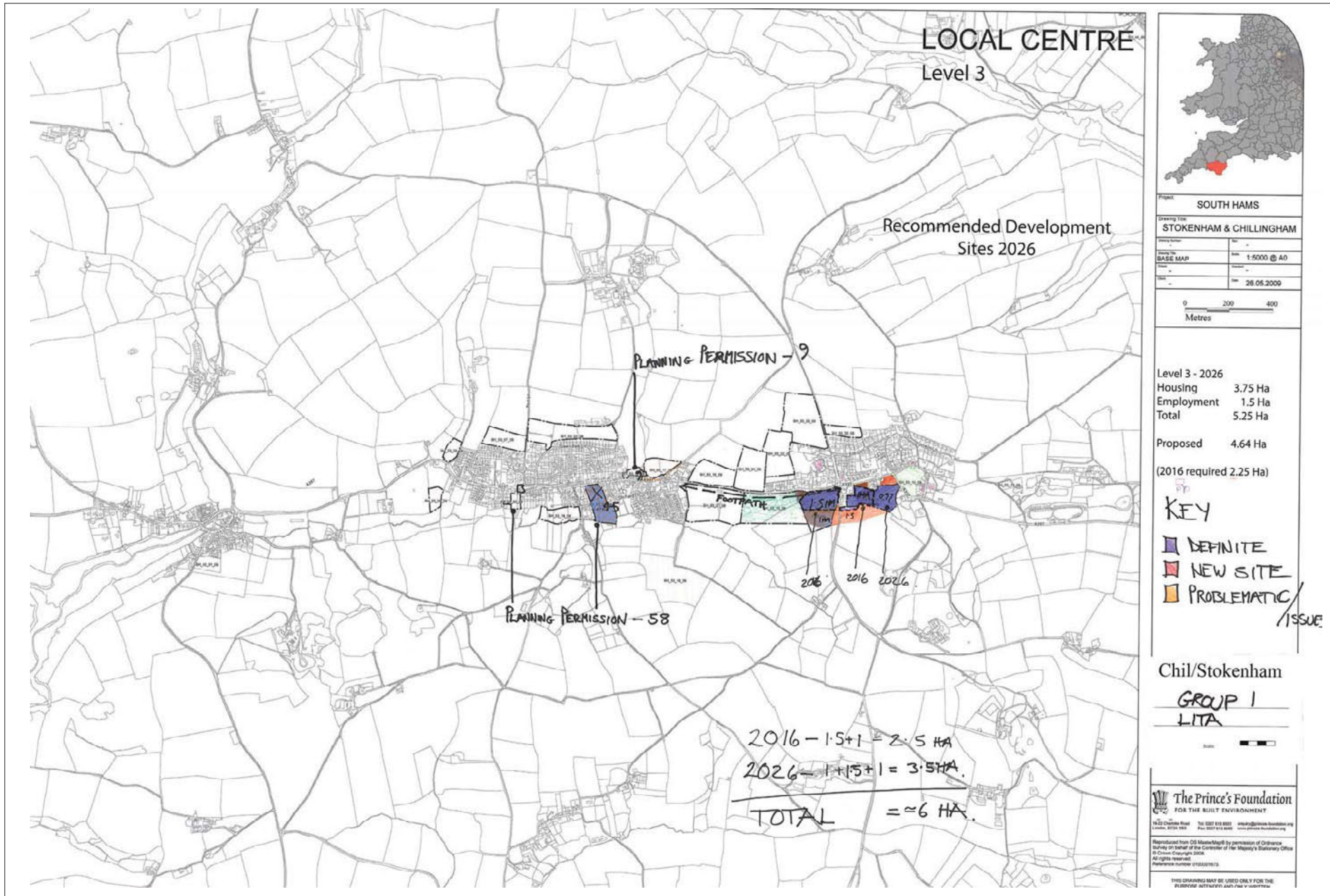
### Participants

District Councillor • Environment Agency • South Hams District Council • South Hams Forward Planning Team • Stokenham Parish Council

### Land Allocation Targets

Core Strategy Allocations  
2016 ±2.25 ha  
2026 **±5.25 ha**





## 5.6 Modbury

### Modbury EbD

The EbD was held in Chillington Methodist Church, on the 18th June 2009.

### Participants

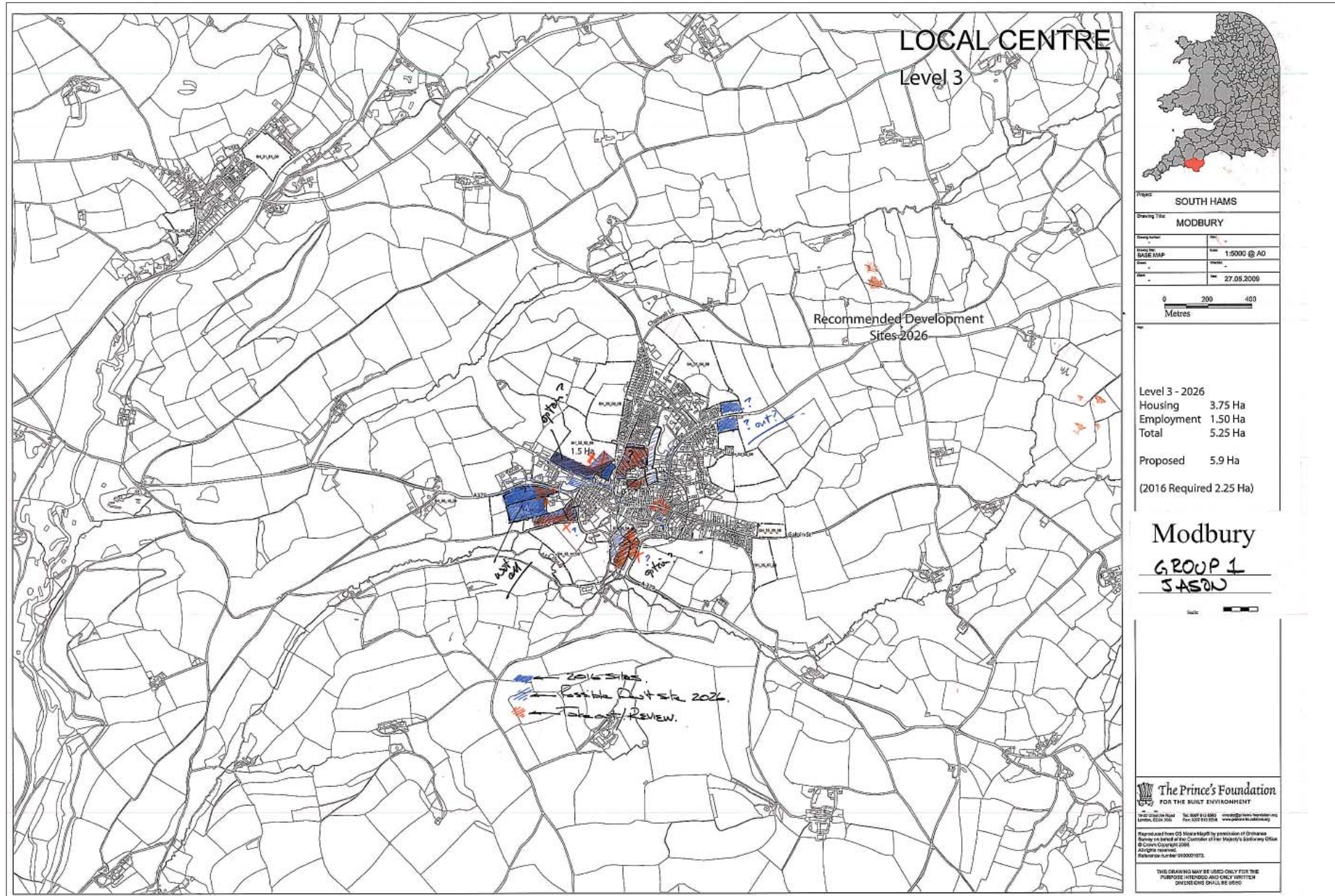
District Councillor • Modbury Parish Council  
• Modbury Residents • Modbury Society • South  
Hams District Council • South Ham Forward  
Planning Team

### Land Allocation Targets

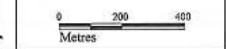
Core Strategy Allocations

2016	±2.25 ha
2026	±5.25 ha





Project	SOUTH HAMS
Drawing Title	MODBURY
Drawing Author	ABC
Scale	1:5000 @ A0
Base Map	OS
Date	27.05.2009



Level 3 - 2026	
Housing	3.75 Ha
Employment	1.50 Ha
Total	5.25 Ha
Proposed	5.9 Ha
(2016 Required)	2.25 Ha

**Modbury**  
**GROUP 1**  
**SASD**



**The Prince's Foundation**  
 FOR THE BUILT ENVIRONMENT

Reproduced from OS Maps & Maps by permission of Ordnance Survey on behalf of the Controller of Her Majesty's Stationery Office © Crown Copyright 2008. All rights reserved. Reference number 010020173.

THIS DRAWING MAY BE USED ONLY FOR THE PURPOSES INTENDED AND ONLY WITH THE DIMENSIONS SHOWN.

## 5.7 Salcombe

### Salcombe EbD

The EbD was held in Chillington Methodist Church, on the 18th June 2009.

### Participants

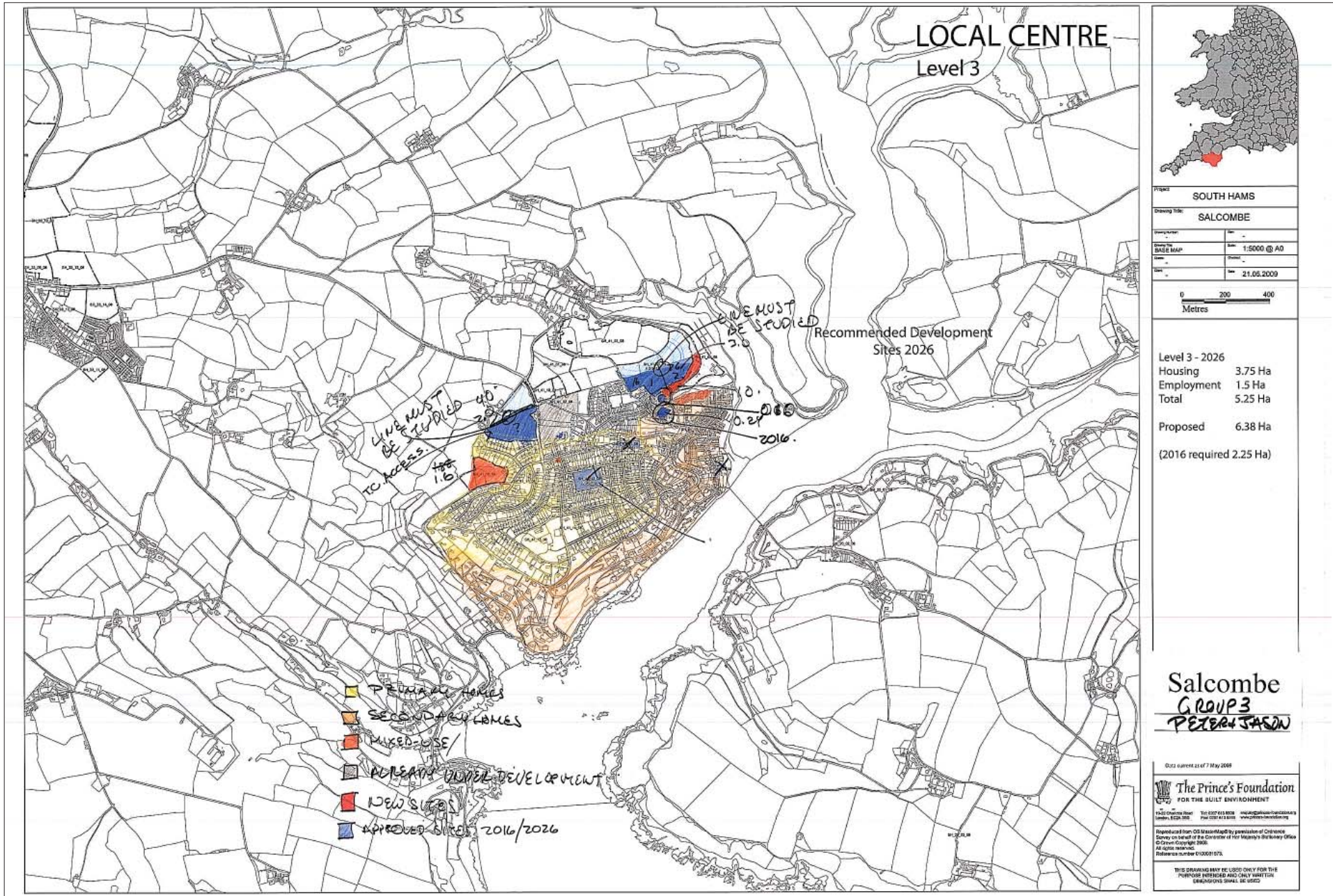
District Councillor • Marlborough Parish Council  
• Salcombe Parish Council • Salcombe Town Council • South Hams District Council • South Hams Forward Planning Team • South Hams Society • South Hams Sustainability Group

### Land Allocation Targets

Core Strategy Allocations

2016	±2.25 ha
2026	±5.25 ha





## 5.8 Yealmpton

### Yealmpton EbD

The EbD was held in Modbury Memorial Hall on the 16th June 2009.

### Participants

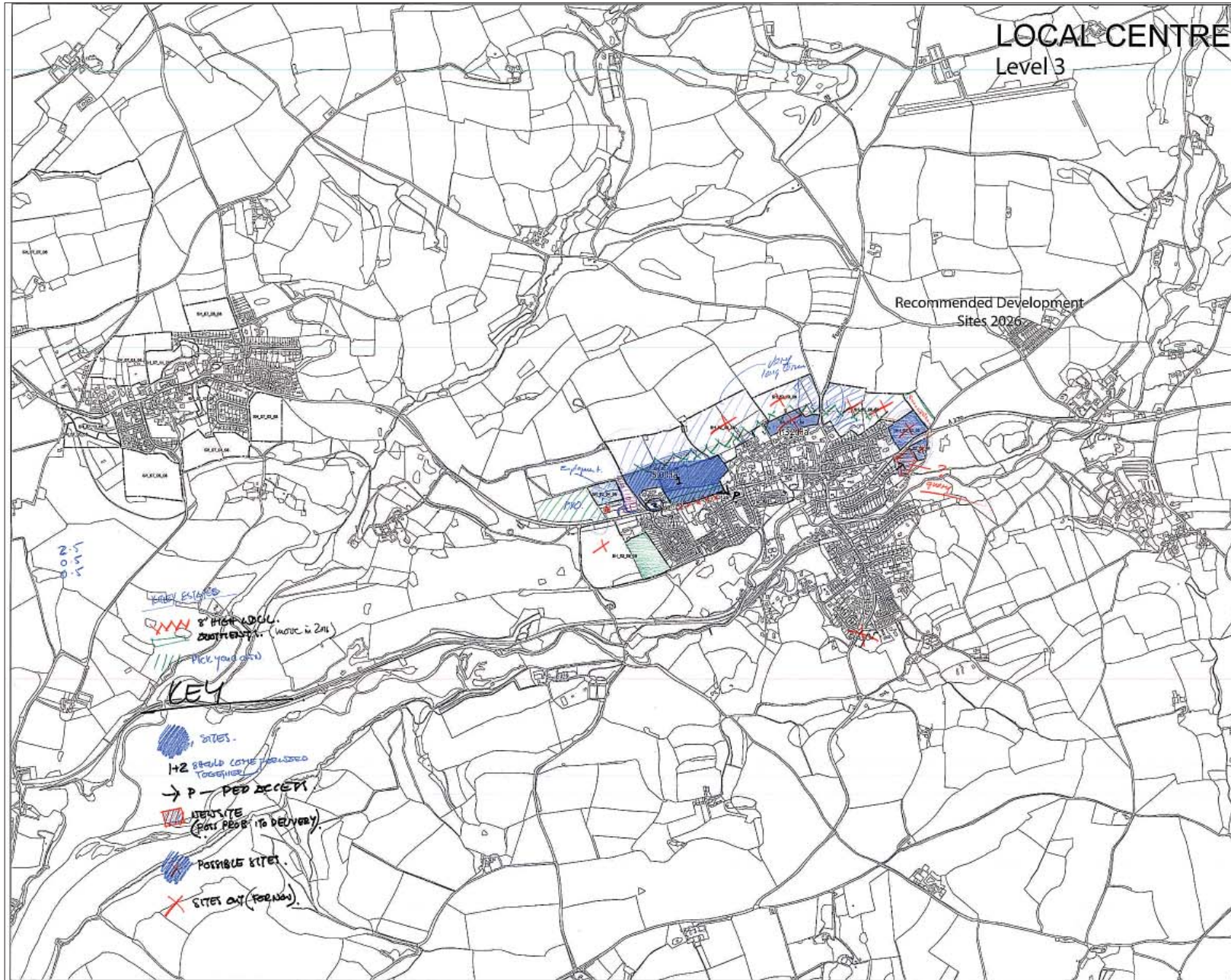
District Councillor • Environment Agency • South Hams District Council • South Hams Forward Planning Team • Yealmpton Parish Council

### Land Allocation Targets

Core Strategy Allocations

2016	±2.25 ha
2026	±5.25 ha





## LOCAL CENTRE

### Level 3

Recommended Development  
Sites 2026

Project		SOUTH HAMS	
Drawing Title		YEALMPTON	
Scale	1:5000 @ AD	Date	27.05.2009

0 200 400  
Metres

Level 3 - 2026	
Housing	3.8 Ha
Employment	1.5 Ha
Total	5.3 Ha
Proposed	5.3 Ha
(2016 Required 2.3 Ha)	

## Yealmpton

### GROUP 2

### JEREMY C.

Scale:

**The Prince's Foundation**  
FOR THE BUILT ENVIRONMENT

14-15 Colston Road London, EC2A 3BA  
Tel: 020 819 8100 Fax: 020 819 8108  
www.princesfoundation.org

Prepared from OS MasterMap by permission of Ordnance Survey (member of the Committee of the Mayor's Culture Office)  
© Crown Copyright 2008  
All rights reserved.  
Reference number: 39002912.

THIS DRAWING MAY BE USED ONLY FOR THE PURPOSE INTENDED AND ONLY WHERE SHOWN BY THE SIGNING BOARD.